

Datasheet for ABIN391274  
**anti-Elf4 antibody (AA 211-237)**[Go to Product page](#)

## 2 Images

## Overview

Quantity:	400 µL
Target:	Elf4
Binding Specificity:	AA 211-237
Reactivity:	Human
Host:	Rabbit
Clonality:	Polyclonal
Conjugate:	This Elf4 antibody is un-conjugated
Application:	Western Blotting (WB), Flow Cytometry (FACS)

## Product Details

Immunogen:	This ELF4 antibody is generated from rabbits immunized with a KLH conjugated synthetic peptide between 211-237 amino acids from the Central region of human ELF4.
Clone:	RB17958
Isotype:	Ig Fraction
Predicted Reactivity:	B, M
Purification:	This antibody is prepared by Saturated Ammonium Sulfate (SAS) precipitation followed by dialysis against PBS.

## Target Details

Target:	Elf4
---------	------

## Target Details

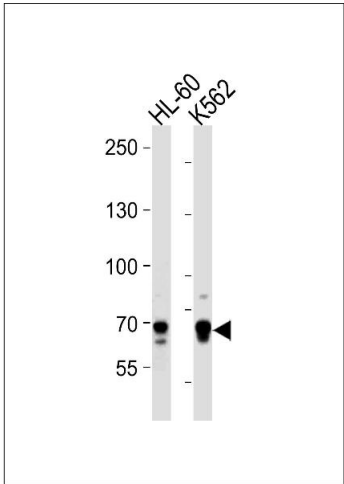
Alternative Name:	ELF4 ( <a href="#">Elf4 Products</a> )
Background:	ELF4 is transcriptional activator that binds to DNA sequences containing the consensus 5'-WGGA-3'. The protein acts synergistically with RUNX1 to transactivate the IL3 promoter. Also transactivates the PRF1 promoter in natural killer (NK) cells. This protein plays a role in the development and function of NK and NK T-cells and in innate immunity.
Molecular Weight:	70730
Gene ID:	2000
NCBI Accession:	<a href="#">NP_001120669</a> , <a href="#">NP_001412</a>
UniProt:	<a href="#">Q99607</a>
Pathways:	<a href="#">Positive Regulation of Endopeptidase Activity</a>

## Application Details

Application Notes:	WB: 1:1000. FC: 1:10~50
Restrictions:	For Research Use only

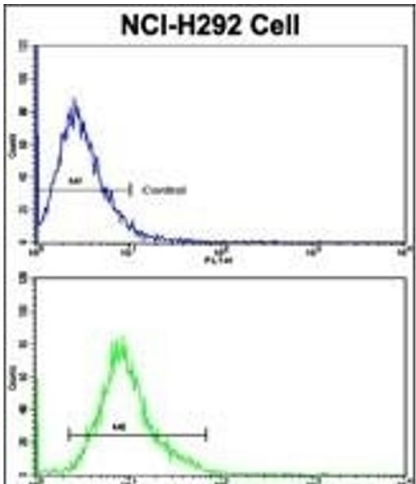
## Handling

Format:	Liquid
Buffer:	Purified polyclonal antibody supplied in PBS with 0.09 % (W/V) sodium azide.
Preservative:	Sodium azide
Precaution of Use:	This product contains Sodium azide: a POISONOUS AND HAZARDOUS SUBSTANCE which should be handled by trained staff only.
Storage:	4 °C, -20 °C
Storage Comment:	Maintain refrigerated at 2-8 °C for up to 6 months. For long term storage store at -20 °C in small aliquots to prevent freeze-thaw cycles.
Expiry Date:	6 months



### Western Blotting

**Image 1.** ELF4 Antibody (Center) (ABIN391274 and ABIN2841324) western blot analysis in HL-60,K562 cell line lysates (35 µg/lane).This demonstrates the ELF4 antibody detected the ELF4 protein (arrow).



### Flow Cytometry

**Image 2.** Flow cytometric analysis of NCI- cells using ELF4 Antibody (Center)(bottom histogram) compared to a negative control cell (top histogram). FITC-conjugated goat-anti-rabbit secondary antibodies were used for the analysis.