

Datasheet for ABIN391307
anti-CAMK1D antibody (C-Term)[Go to Product page](#)

4 Images

Overview

Quantity:	400 µL
Target:	CAMK1D
Binding Specificity:	AA 302-333, C-Term
Reactivity:	Human
Host:	Rabbit
Clonality:	Polyclonal
Conjugate:	This CAMK1D antibody is un-conjugated
Application:	Western Blotting (WB), Immunohistochemistry (Paraffin-embedded Sections) (IHC (p))

Product Details

Immunogen:	This CAMK1D (CAMK1 delta) antibody is generated from rabbits immunized with a KLH conjugated synthetic peptide between 302-333 amino acids from the C-terminal region of human CAMK1D (CAMK1 delta).
Clone:	RB2518
Isotype:	Ig Fraction
Purification:	This antibody is prepared by Saturated Ammonium Sulfate (SAS) precipitation followed by dialysis against PBS.

Target Details

Target:	CAMK1D
Alternative Name:	CAMK1D (CAMK1 delta) (CAMK1D Products)

Target Details

Background: CAMK1-like protein kinase belongs to a proposed calcium-triggered signaling cascade. This protein is expressed in polymorphonuclear leukocytes (PMNs) and may be part of the chemokine signal transduction pathway that regulates granulocyte function. CAMK1-like protein kinase may play a role in apoptosis of erythroleukemia cells. It activates MAP kinase MAPK3, and in vitro, phosphorylates transcription factor CREM isoform Beta and probably CREB1.

Molecular Weight: 42914

Gene ID: 57118

NCBI Accession: [NP_065130](#), [NP_705718](#)

UniProt: [Q8IU85](#)

Application Details

Application Notes: WB: 1:1000. WB: 1:1000. IHC-P: 1:50~100. IHC-P: 1:50~100

Restrictions: For Research Use only

Handling

Format: Liquid

Buffer: Purified polyclonal antibody supplied in PBS with 0.09 % (W/V) sodium azide.

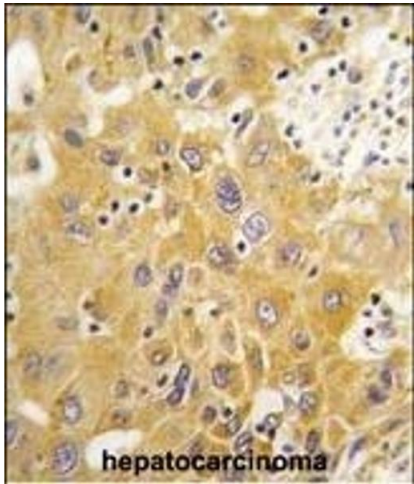
Preservative: Sodium azide

Precaution of Use: This product contains Sodium azide: a POISONOUS AND HAZARDOUS SUBSTANCE which should be handled by trained staff only.

Storage: 4 °C, -20 °C

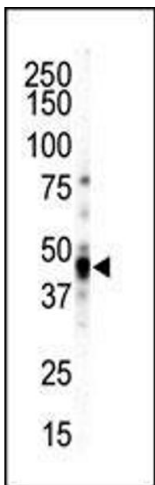
Storage Comment: Maintain refrigerated at 2-8 °C for up to 6 months. For long term storage store at -20 °C in small aliquots to prevent freeze-thaw cycles.

Expiry Date: 6 months



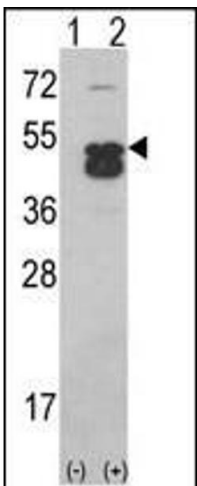
Immunohistochemistry (Paraffin-embedded Sections)

Image 1. Formalin-fixed and paraffin-embedded human hepatocarcinoma tissue reacted with CK1-like Antibody (C-term) (ABIN391307 and ABIN2841342), which was peroxidase-conjugated to the secondary antibody, followed by DAB staining. This data demonstrates the use of this antibody for immunohistochemistry, clinical relevance has not been evaluated.



Western Blotting

Image 2. Western blot analysis of anti-CK1-like C-term Pab (ABIN391307 and ABIN2841342) in NCI cell lysate. CK1-like (arrow) was detected using purified Pab. Secondary HRP-anti-rabbit was used for signal visualization with chemiluminescence.



Western Blotting

Image 3. Western blot analysis of CK1D (arrow) using CK1D (CK1 delta)Antibody (C-term) (ABIN391307 and ABIN2841342). 293 cell lysates (2 µg/lane) either nontransfected (Lane 1) or transiently transfected with the CK1D gene (Lane 2).

Please check the [product details page](#) for more images. Overall 4 images are available for ABIN391307.