

Datasheet for ABIN391308
anti-CAMK1D antibody (N-Term)[Go to Product page](#)

1 Image

Overview

Quantity:	400 µL
Target:	CAMK1D
Binding Specificity:	AA 39-69, N-Term
Reactivity:	Human
Host:	Rabbit
Clonality:	Polyclonal
Conjugate:	This CAMK1D antibody is un-conjugated
Application:	Western Blotting (WB)

Product Details

Immunogen:	This CAMK1D antibody is generated from rabbits immunized with a KLH conjugated synthetic peptide between 39-69 amino acids from the N-terminal region of human CAMK1D.
Clone:	RB16493
Isotype:	Ig Fraction
Predicted Reactivity:	M
Purification:	This antibody is prepared by Saturated Ammonium Sulfate (SAS) precipitation followed by dialysis against PBS.

Target Details

Target:	CAMK1D
---------	--------

Target Details

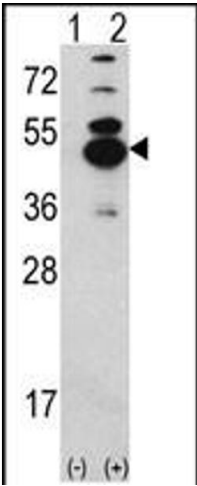
Alternative Name:	CAMK1D (CAMK1D Products)
Background:	CAMK1-like protein kinase belongs to a proposed calcium-triggered signaling cascade. This protein is expressed in polymorphonuclear leukocytes (PMNs) and may be part of the chemokine signal transduction pathway that regulates granulocyte function. CAMK1-like protein kinase may play a role in apoptosis of erythroleukemia cells. It activates MAP kinase MAPK3, and in vitro, phosphorylates transcription factor CREM isoform Beta and probably CREB1.
Molecular Weight:	42914
Gene ID:	57118
NCBI Accession:	NP_065130 , NP_705718
UniProt:	Q8IU85

Application Details

Application Notes:	WB: 1:1000
Restrictions:	For Research Use only

Handling

Format:	Liquid
Buffer:	Purified polyclonal antibody supplied in PBS with 0.09 % (W/V) sodium azide.
Preservative:	Sodium azide
Precaution of Use:	This product contains Sodium azide: a POISONOUS AND HAZARDOUS SUBSTANCE which should be handled by trained staff only.
Storage:	4 °C,-20 °C
Storage Comment:	Maintain refrigerated at 2-8 °C for up to 6 months. For long term storage store at -20 °C in small aliquots to prevent freeze-thaw cycles.
Expiry Date:	6 months



Western Blotting

Image 1. Western blot analysis of CK1D (arrow) using rabbit polyclonal CK1D Antibody (N-term) (ABIN391308 and ABIN2841343). 293 cell lysates (2 µg/lane) either nontransfected (Lane 1) or transiently transfected with the CK1D gene (Lane 2).