

Datasheet for ABIN391310
anti-CAMK1 antibody (C-Term)

3 Images

[Go to Product page](#)

Overview

Quantity:	400 µL
Target:	CAMK1
Binding Specificity:	AA 341-370, C-Term
Reactivity:	Human, Mouse, Rat, Monkey
Host:	Rabbit
Clonality:	Polyclonal
Conjugate:	This CAMK1 antibody is un-conjugated
Application:	Western Blotting (WB), Immunohistochemistry (Paraffin-embedded Sections) (IHC (p))

Product Details

Immunogen:	This CAMK1 antibody is generated from rabbits immunized with a KLH conjugated synthetic peptide between 341-370 amino acids from the C-terminal region of human CAMK1.
Clone:	RB1255
Isotype:	Ig Fraction
Purification:	This antibody is prepared by Saturated Ammonium Sulfate (SAS) precipitation followed by dialysis against PBS.

Target Details

Target:	CAMK1
Alternative Name:	CAMK1 (CAMK1 Products)

Target Details

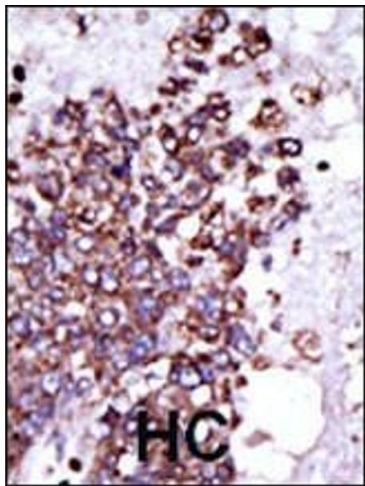
Background:	Calcium/calmodulin-dependent protein kinase I is expressed in many tissues and is a component of a calmodulin-dependent protein kinase cascade. Calcium/calmodulin directly activates calcium/calmodulin-dependent protein kinase I by binding to the enzyme and indirectly promotes the phosphorylation and synergistic activation of the enzyme by calcium/calmodulin-dependent protein kinase I kinase.
Molecular Weight:	41337
Gene ID:	8536
NCBI Accession:	NP_003647
UniProt:	Q14012
Pathways:	Myometrial Relaxation and Contraction , Regulation of Muscle Cell Differentiation , Smooth Muscle Cell Migration

Application Details

Application Notes:	WB: 1:1000. WB: 1:1000. IHC-P: 1:50~100
Restrictions:	For Research Use only

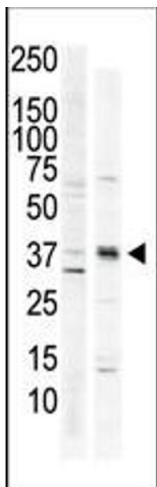
Handling

Format:	Liquid
Buffer:	Purified polyclonal antibody supplied in PBS with 0.09 % (W/V) sodium azide.
Preservative:	Sodium azide
Precaution of Use:	This product contains Sodium azide: a POISONOUS AND HAZARDOUS SUBSTANCE which should be handled by trained staff only.
Storage:	4 °C,-20 °C
Storage Comment:	Maintain refrigerated at 2-8 °C for up to 6 months. For long term storage store at -20 °C in small aliquots to prevent freeze-thaw cycles.
Expiry Date:	6 months



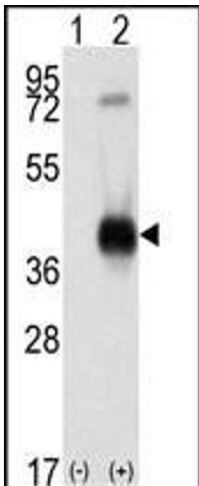
Immunohistochemistry (Paraffin-embedded Sections)

Image 1. Formalin-fixed and paraffin-embedded human cancer tissue reacted with the primary antibody, which was peroxidase-conjugated to the secondary antibody, followed by DAB staining. This data demonstrates the use of this antibody for immunohistochemistry, clinical relevance has not been evaluated. BC = breast carcinoma, HC = hepatocarcinoma.



Western Blotting

Image 2. The anti-CK1 C-term Pab (ABIN391310 and ABIN2841344) is used in Western blot to detect CK1 in HeLa cell lysate (lane 1) and primate brain tissue lysate (lane 2).



Western Blotting

Image 3. Western blot analysis of CK1 (arrow) using rabbit polyclonal CK1 Antibody (C-term) (ABIN391310 and ABIN2841344). 293 cell lysates (2 µg/lane) either nontransfected (Lane 1) or transiently transfected with the CK1 gene (Lane 2) (Origene Technologies).