

Datasheet for ABIN391311

**anti-CAMK2A antibody (C-Term)**

## 3 Images

[Go to Product page](#)

## Overview

Quantity:	400 µL
Target:	CAMK2A
Binding Specificity:	AA 446-478, C-Term
Reactivity:	Human
Host:	Rabbit
Clonality:	Polyclonal
Application:	Western Blotting (WB), Immunohistochemistry (Paraffin-embedded Sections) (IHC (p))

## Product Details

Immunogen:	This CAMK2A (CAMK2 alpha) antibody is generated from rabbits immunized with a KLH conjugated synthetic peptide between 446-478 amino acids from the C-terminal region of human CAMK2A (CAMK2 alpha).
Clone:	RB1258
Isotype:	Ig Fraction
Predicted Reactivity:	M, Rat
Purification:	This antibody is prepared by Saturated Ammonium Sulfate (SAS) precipitation followed by dialysis against PBS.

## Target Details

Target:	CAMK2A
Alternative Name:	CAMK2A (CAMK2 alpha) ( <a href="#">CAMK2A Products</a> )

## Target Details

---

Background:	CaM-kinase II (CAMK2) is a prominent Ser/Thr protein kinase in the central nervous system that may function in long-term potentiation and neurotransmitter release. Likely autophosphorylation of Thr-286 allows the kinase to switch from a calmodulin-dependent to a calmodulin-independent state. CAMK2 is composed of four different chains: alpha, beta, gamma, and delta. The different isoforms assemble into homo- or heteromultimeric holoenzymes composed of 8 to 12 subunits.
Molecular Weight:	54088
Gene ID:	815
NCBI Accession:	<a href="#">NP_741960</a>
UniProt:	<a href="#">Q9UQM7</a>
Pathways:	<a href="#">WNT Signaling</a> , <a href="#">Interferon-gamma Pathway</a> , <a href="#">Myometrial Relaxation and Contraction</a>

## Application Details

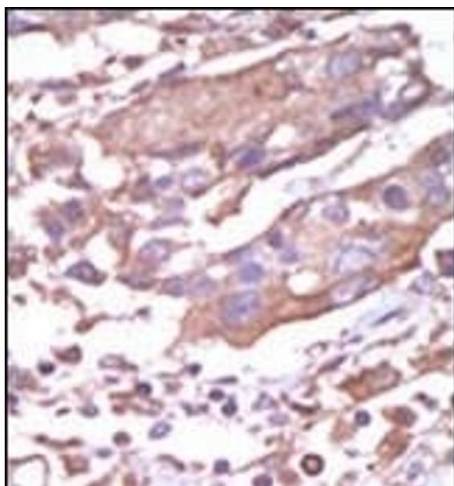
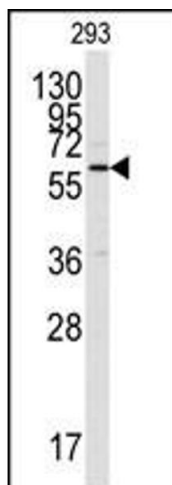
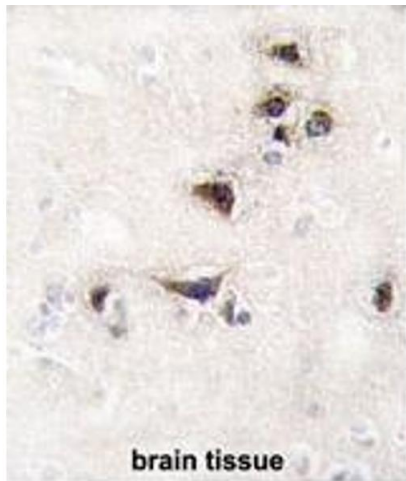
---

Application Notes:	WB: 1:1000. IHC-P: 1:50~100. IHC-P: 1:50~100
Restrictions:	For Research Use only

## Handling

---

Format:	Liquid
Buffer:	Purified polyclonal antibody supplied in PBS with 0.09 % (W/V) sodium azide.
Preservative:	Sodium azide
Precaution of Use:	This product contains Sodium azide: a POISONOUS AND HAZARDOUS SUBSTANCE which should be handled by trained staff only.
Storage:	4 °C,-20 °C
Storage Comment:	Maintain refrigerated at 2-8 °C for up to 6 months. For long term storage store at -20 °C in small aliquots to prevent freeze-thaw cycles.
Expiry Date:	6 months



### Immunohistochemistry (Paraffin-embedded Sections)

**Image 1.** Formalin-fixed and paraffin-embedded human brain tissue reacted with CK2 alpha Antibody (C-term) (ABIN391311 and ABIN2841345), which was peroxidase-conjugated to the secondary antibody, followed by DAB staining. This data demonstrates the use of this antibody for immunohistochemistry, clinical relevance has not been evaluated.

### Western Blotting

**Image 2.** Western blot analysis of anti-CK2 alpha C-term Pab (ABIN391311 and ABIN2841345) in 293 cell lysate. CK2 alpha (arrow) was detected using purified Pab. Secondary HRP-anti-rabbit was used for signal visualization with chemiluminescence.

### Immunohistochemistry (Paraffin-embedded Sections)

**Image 3.** Formalin-fixed and paraffin-embedded human cancer tissue reacted with the primary antibody, which was peroxidase-conjugated to the secondary antibody, followed by AEC staining. This data demonstrates the use of this antibody for immunohistochemistry, clinical relevance has not been evaluated. BC = breast carcinoma, HC = hepatocarcinoma.