

Datasheet for ABIN391314
anti-CAMK2D antibody (C-Term)

3 Images

[Go to Product page](#)

Overview

Quantity:	400 µL
Target:	CAMK2D
Binding Specificity:	AA 448-478, C-Term
Reactivity:	Human, Rat
Host:	Rabbit
Clonality:	Polyclonal
Conjugate:	This CAMK2D antibody is un-conjugated
Application:	Western Blotting (WB), Immunohistochemistry (Paraffin-embedded Sections) (IHC (p))

Product Details

Immunogen:	This CAMK2D (CAMK2 delta) antibody is generated from rabbits immunized with a KLH conjugated synthetic peptide between 448-478 amino acids from the C-terminal region of human CAMK2D (CAMK2 delta).
Clone:	RB1259
Isotype:	Ig Fraction
Predicted Reactivity:	M, Pig, Rb
Purification:	This antibody is prepared by Saturated Ammonium Sulfate (SAS) precipitation followed by dialysis against PBS.

Target Details

Target:	CAMK2D
---------	--------

Target Details

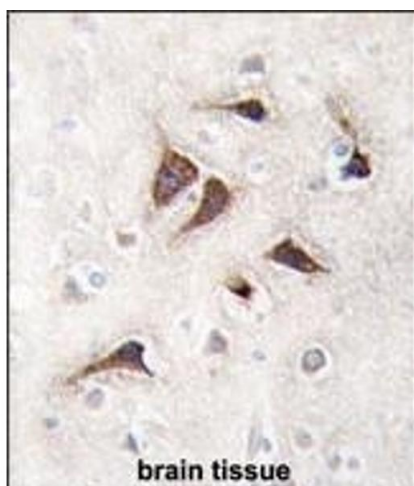
Alternative Name:	CAMK2D (CAMK2 delta) (CAMK2D Products)
Background:	CaM-kinase II (CAMK2) is a prominent Ser/Thr protein kinase in the central nervous system that may function in long-term potentiation and neurotransmitter release. Likely autophosphorylation of Thr-286 allows the kinase to switch from a calmodulin-dependent to a calmodulin-independent state. CAMK2 is composed of four different chains: alpha, beta, gamma, and delta. The different isoforms assemble into homo- or heteromultimeric holoenzymes composed of 8 to 12 subunits. Expression of CAMK2 delta is significantly increased in patients suffering from dilated cardiomyopathy.
Molecular Weight:	56369
Gene ID:	817
NCBI Accession:	NP_001212 , NP_742112 , NP_742113 , NP_742125 , NP_742126 , NP_742127
UniProt:	Q13557
Pathways:	WNT Signaling , Interferon-gamma Pathway , Myometrial Relaxation and Contraction , Smooth Muscle Cell Migration

Application Details

Application Notes:	WB: 1:1000. IHC-P: 1:50~100. IHC-P: 1:50~100
Restrictions:	For Research Use only

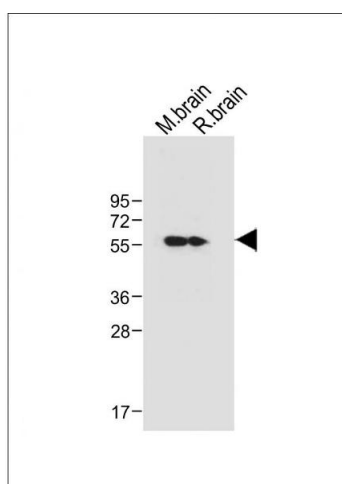
Handling

Format:	Liquid
Buffer:	Purified polyclonal antibody supplied in PBS with 0.09 % (W/V) sodium azide.
Preservative:	Sodium azide
Precaution of Use:	This product contains Sodium azide: a POISONOUS AND HAZARDOUS SUBSTANCE which should be handled by trained staff only.
Storage:	4 °C,-20 °C
Storage Comment:	Maintain refrigerated at 2-8 °C for up to 6 months. For long term storage store at -20 °C in small aliquots to prevent freeze-thaw cycles.
Expiry Date:	6 months



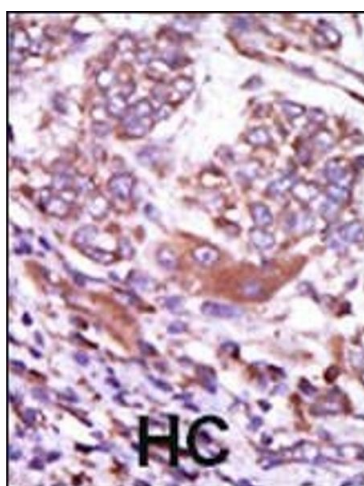
Immunohistochemistry (Paraffin-embedded Sections)

Image 1. Formalin-fixed and paraffin-embedded human brain tissue reacted with CK2 delta Antibody (C-term) (ABIN391314 and ABIN2841346), which was peroxidase-conjugated to the secondary antibody, followed by DAB staining. This data demonstrates the use of this antibody for immunohistochemistry, clinical relevance has not been evaluated.



Western Blotting

Image 2. All lanes : Anti-CK2D (CK2 delta) Antibody (C-term) at 1:1000 dilution Lane 1: Mouse brain tissue lysate Lane 2: Rat brain tissue lysate Lysates/proteins at 20 µg per lane. Secondary Goat Anti-Rabbit IgG, (H+L), Peroxidase conjugated at 1/10000 dilution. Predicted band size : 56 kDa Blocking/Dilution buffer: 5 % NFDm/TBST.



Immunohistochemistry (Paraffin-embedded Sections)

Image 3. Formalin-fixed and paraffin-embedded human cancer tissue reacted with the primary antibody, which was peroxidase-conjugated to the secondary antibody, followed by AEC staining. This data demonstrates the use of this antibody for immunohistochemistry, clinical relevance has not been evaluated. BC = breast carcinoma, HC = hepatocarcinoma.