

Datasheet for ABIN391328
anti-MAPK11 antibody (AA 334-366)[Go to Product page](#)

2 Images

Overview

Quantity:	400 µL
Target:	MAPK11
Binding Specificity:	AA 334-366
Reactivity:	Human, Mouse
Host:	Rabbit
Clonality:	Polyclonal
Conjugate:	This MAPK11 antibody is un-conjugated
Application:	Western Blotting (WB), Immunohistochemistry (Paraffin-embedded Sections) (IHC (p))

Product Details

Immunogen:	This MAPK11 antibody is generated from rabbits immunized with a KLH conjugated synthetic peptide between 334-366 amino acids from the center region of human MAPK11.
Clone:	RB03193
Isotype:	Ig Fraction
Purification:	This antibody is prepared by Saturated Ammonium Sulfate (SAS) precipitation followed by dialysis against PBS.

Target Details

Target:	MAPK11
Alternative Name:	MAPK11 (MAPK11 Products)

Target Details

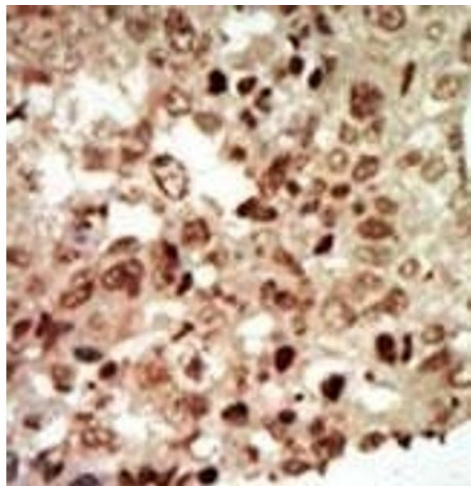
Background:	MAPK11 is a Ser/Thr kinase involved in a signal transduction pathway that is activated by changes in the osmolarity of the extracellular environment, by cytokines, or by environmental stress. It preferentially phosphorylates transcription factor ATF2. This protein is activated by phosphorylation on threonine and tyrosine by MKK6, and is inhibited by pyridinyl-imidazole related compounds. Highest expression levels are in the brain and heart, with additional expression in the placenta, lung, liver, skeletal muscle, kidney and pancreas.
Molecular Weight:	41357
Gene ID:	5600
NCBI Accession:	NP_002742
UniProt:	Q15759
Pathways:	MAPK Signaling , Neurotrophin Signaling Pathway , Activation of Innate immune Response , Response to Water Deprivation , Regulation of Muscle Cell Differentiation , ER-Nucleus Signaling , Hepatitis C , Toll-Like Receptors Cascades , Signaling Events mediated by VEGFR1 and VEGFR2 , Thromboxane A2 Receptor Signaling , BCR Signaling , S100 Proteins

Application Details

Application Notes:	WB: 1:1000. IHC-P: 1:50~100
Restrictions:	For Research Use only

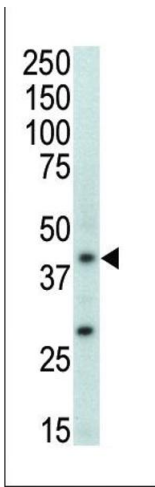
Handling

Format:	Liquid
Buffer:	Purified polyclonal antibody supplied in PBS with 0.09 % (W/V) sodium azide.
Preservative:	Sodium azide
Precaution of Use:	This product contains Sodium azide: a POISONOUS AND HAZARDOUS SUBSTANCE which should be handled by trained staff only.
Storage:	4 °C,-20 °C
Storage Comment:	Maintain refrigerated at 2-8 °C for up to 6 months. For long term storage store at -20 °C in small aliquots to prevent freeze-thaw cycles.
Expiry Date:	6 months



Immunohistochemistry (Paraffin-embedded Sections)

Image 1. Formalin-fixed and paraffin-embedded human cancer tissue reacted with the primary antibody, which was peroxidase-conjugated to the secondary antibody, followed by AEC staining. This data demonstrates the use of this antibody for immunohistochemistry, clinical relevance has not been evaluated. BC = breast carcinoma, HC = hepatocarcinoma.



Western Blotting

Image 2. Western blot analysis of anti-PK11 Pab (ABIN391328 and ABIN2841358) in mouse brain tissue lysate. PK11 (arrow) was detected using purified Pab. Secondary HRP-anti-rabbit was used for signal visualization with chemiluminescence.