

Datasheet for ABIN391329
anti-MAPK12 antibody (AA 339-367)[Go to Product page](#)

4 Images

Overview

Quantity:	400 µL
Target:	MAPK12
Binding Specificity:	AA 339-367
Reactivity:	Human, Mouse
Host:	Rabbit
Clonality:	Polyclonal
Conjugate:	This MAPK12 antibody is un-conjugated
Application:	Western Blotting (WB), Immunohistochemistry (Paraffin-embedded Sections) (IHC (p))

Product Details

Immunogen:	This MAPK12 antibody is generated from rabbits immunized with a KLH conjugated synthetic peptide between 339-367 amino acids from the Central region of human MAPK12.
Clone:	RB03195-03196
Isotype:	Ig Fraction
Purification:	This antibody is prepared by Saturated Ammonium Sulfate (SAS) precipitation followed by dialysis against PBS.

Target Details

Target:	MAPK12
Alternative Name:	p38 gamma (MAPK12) (MAPK12 Products)

Target Details

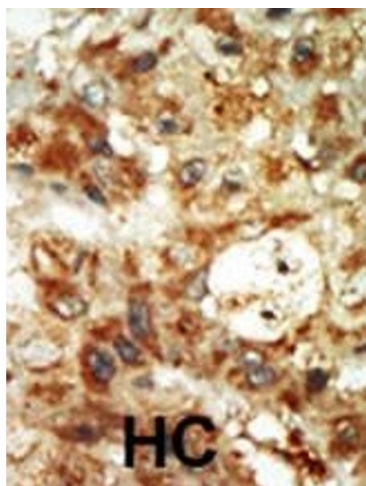
Background:	Activation of members of the mitogen-activated protein kinase family is a major mechanism for transduction of extracellular signals. Stress-activated protein kinases are one subclass of MAP kinases. MAPK12 functions as a signal transducer during differentiation of myoblasts to myotubes.
Molecular Weight:	41940
Gene ID:	6300
NCBI Accession:	NP_002960
UniProt:	P53778
Pathways:	MAPK Signaling , Neurotrophin Signaling Pathway , Regulation of Muscle Cell Differentiation , Hepatitis C , BCR Signaling , S100 Proteins

Application Details

Application Notes:	WB: 1:1000. WB: 1:1000. WB: 1:2000. IHC-P: 1:50~100
Restrictions:	For Research Use only

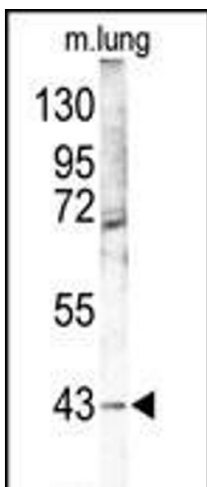
Handling

Format:	Liquid
Buffer:	Purified polyclonal antibody supplied in PBS with 0.09 % (W/V) sodium azide.
Preservative:	Sodium azide
Precaution of Use:	This product contains Sodium azide: a POISONOUS AND HAZARDOUS SUBSTANCE which should be handled by trained staff only.
Storage:	4 °C, -20 °C
Storage Comment:	Maintain refrigerated at 2-8 °C for up to 6 months. For long term storage store at -20 °C in small aliquots to prevent freeze-thaw cycles.
Expiry Date:	6 months



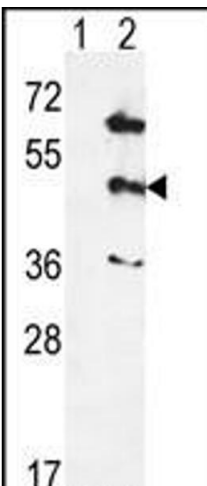
Immunohistochemistry (Paraffin-embedded Sections)

Image 1. Formalin-fixed and paraffin-embedded human cancer tissue reacted with the primary antibody, which was peroxidase-conjugated to the secondary antibody, followed by AEC staining. This data demonstrates the use of this antibody for immunohistochemistry, clinical relevance has not been evaluated. BC = breast carcinoma, HC = hepatocarcinoma.



Western Blotting

Image 2. Western blot analysis of p38 gam (PK12) Antibody (Center) (ABIN391329 and ABIN2841359) in mouse lung tissue lysates (35 µg/lane). PK12 (arrow) was detected using the purified Pab.



Western Blotting

Image 3. Western blot analysis of PK12 (arrow) using rabbit polyclonal hPK12- (ABIN391329 and ABIN2841359). 293 cell lysates (2 µg/lane) either nontransfected (Lane 1) or transiently transfected (Lane 2) with the PK12 gene.

Please check the [product details page](#) for more images. Overall 4 images are available for ABIN391329.