

Datasheet for ABIN391350  
**anti-LKB1 antibody (N-Term)**

5 Images

1 Publication

[Go to Product page](#)

## Overview

Quantity:	400 µL
Target:	LKB1 (STK11)
Binding Specificity:	AA 14-44, N-Term
Reactivity:	Human
Host:	Rabbit
Clonality:	Polyclonal
Conjugate:	This LKB1 antibody is un-conjugated
Application:	Western Blotting (WB), Immunofluorescence (IF), Immunohistochemistry (Paraffin-embedded Sections) (IHC (p)), Flow Cytometry (FACS)

## Product Details

Immunogen:	This STK11 (LKB1) antibody is generated from rabbits immunized with a KLH conjugated synthetic peptide between 14-44 amino acids from the N-terminal region of human STK11 (LKB1).
Clone:	RB3547
Isotype:	Ig Fraction
Predicted Reactivity:	C, M, Rat, X
Purification:	This antibody is prepared by Saturated Ammonium Sulfate (SAS) precipitation followed by dialysis against PBS.

## Target Details

Target:	LKB1 (STK11)
Alternative Name:	STK11 (LKB1) ( <a href="#">STK11 Products</a> )
Background:	STK11, is a member of the serine/threonine kinase family, regulates cell polarity and functions as a tumor suppressor. Mutations in STK11 have been associated with Peutz-Jeghers syndrome, an autosomal dominant disorder characterized by the growth of polyps in the gastrointestinal tract, pigmented macules on the skin and mouth, and other neoplasms.
Molecular Weight:	48636
NCBI Accession:	<a href="#">NP_000446</a>
UniProt:	<a href="#">Q15831</a>
Pathways:	<a href="#">AMPK Signaling</a> , <a href="#">Carbohydrate Homeostasis</a> , <a href="#">Regulation of Carbohydrate Metabolic Process</a> , <a href="#">Warburg Effect</a>

## Application Details

Application Notes:	IF: 1:10~50. WB: 1:1000. WB: 1:1000. IHC-P: 1:50~100. FC: 1:10~50
Restrictions:	For Research Use only

## Handling

Format:	Liquid
Buffer:	Purified polyclonal antibody supplied in PBS with 0.09 % (W/V) sodium azide.
Preservative:	Sodium azide
Precaution of Use:	This product contains Sodium azide: a POISONOUS AND HAZARDOUS SUBSTANCE which should be handled by trained staff only.
Storage:	4 °C,-20 °C
Storage Comment:	Maintain refrigerated at 2-8 °C for up to 6 months. For long term storage store at -20 °C.
Expiry Date:	6 months

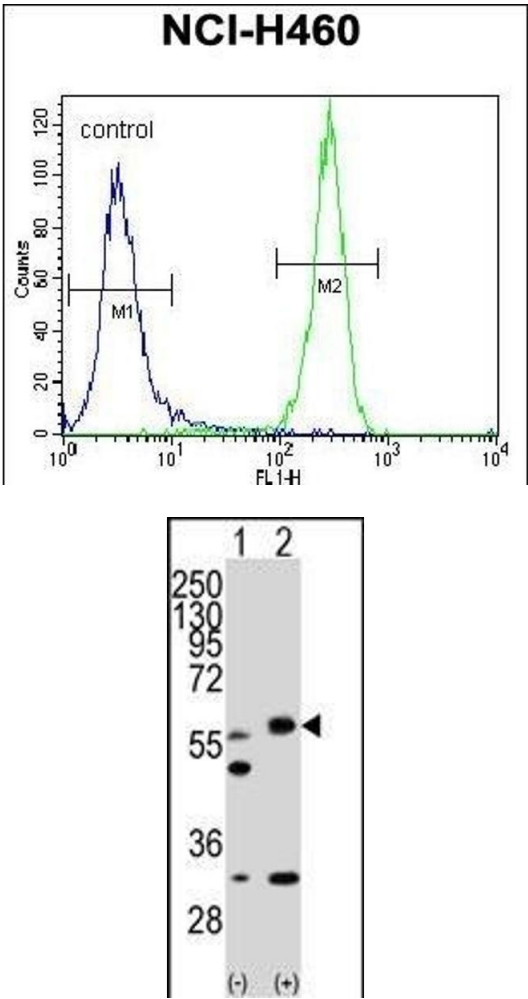
## Publications

Product cited in:	Humphrey, Newcomb, Yu, Hao, Yu, Krajewski, Du, Jhala: "Mixed lineage kinase-3 stabilizes and functionally cooperates with TRIBBL-3 to compromise mitochondrial integrity in cytokine-induced death of pancreatic beta cells." in: <b>The Journal of biological chemistry</b> , Vol. 285, Issue
-------------------	--

29, pp. 22426-36, (2010) ([PubMed](#)).

Nagao, Hayashi: "Mixed lineage kinase 2 and hippocalcin are localized in Lewy bodies of Parkinson's disease." in: **Journal of the neurological sciences**, Vol. 281, Issue 1-2, pp. 51-4, (2009) ([PubMed](#)).

Images

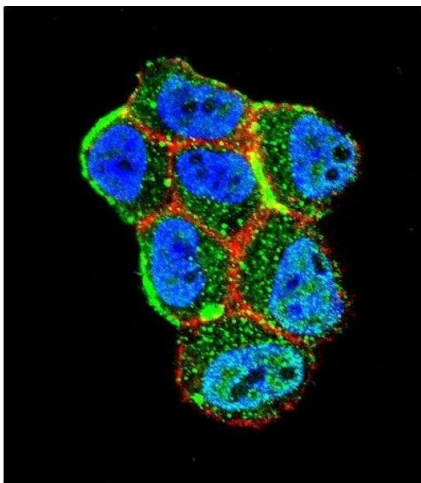


Flow Cytometry

**Image 1.** STK11 (LKB1) Antibody (N-term I29) (ABIN391350 and ABIN2841371) flow cytometric analysis of NCI- cells (right histogram) compared to a negative control cell (left histogram).FITC-conjugated goat-anti-rabbit secondary antibodies were used for the analysis.

Western Blotting

**Image 2.** Western blot analysis of STK11 (arrow) using rabbit polyclonal STK11 Antibody (ABIN391350 and ABIN2841371). 293 cell lysates (2 µg/lane) either nontransfected (Lane 1) or transiently transfected with the STK11 gene (Lane 2) (Origene Technologies).



#### Immunofluorescence

**Image 3.** Confocal immunofluorescent analysis of STK11 (LKB1) Antibody (N-term I29) (ABIN391350 and ABIN2841371) with ZR-75-1 cell followed by Alexa Fluor 488-conjugated goat anti-rabbit IgG (green). Actin filaments have been labeled with Alexa Fluor 555 phalloidin (red). DAPI was used to stain the cell nuclear (blue).

Please check the [product details page](#) for more images. Overall 5 images are available for ABIN391350.