

Datasheet for ABIN391358
anti-STK31 antibody (N-Term)[Go to Product page](#)

3 Images

Overview

Quantity:	400 µL
Target:	STK31
Binding Specificity:	AA 32-62, N-Term
Reactivity:	Human, Rat
Host:	Rabbit
Clonality:	Polyclonal
Conjugate:	This STK31 antibody is un-conjugated
Application:	Western Blotting (WB), Immunohistochemistry (Paraffin-embedded Sections) (IHC (p))

Product Details

Immunogen:	This STK31 antibody is generated from rabbits immunized with a KLH conjugated synthetic peptide between 32-62 amino acids from the N-terminal region of human STK31.
Clone:	RB3559
Isotype:	Ig Fraction
Purification:	This antibody is purified through a protein A column, followed by peptide affinity purification.

Target Details

Target:	STK31
Alternative Name:	STK31 (STK31 Products)
Background:	This gene is similar to a mouse gene that encodes a putative protein kinase with a tudor

Target Details

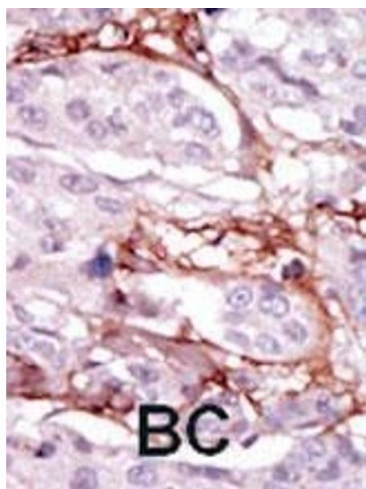
	domain, and shows testis-specific expression. Alternative splicing results in multiple transcript variants encoding different isoforms.
Molecular Weight:	115694
Gene ID:	56164
NCBI Accession:	NP_001247433 , NP_001247434 , NP_113602 , NP_116562
UniProt:	Q9BXU1

Application Details

Application Notes:	WB: 1:1000. WB: 1:1000. IHC-P: 1:50~100
Restrictions:	For Research Use only

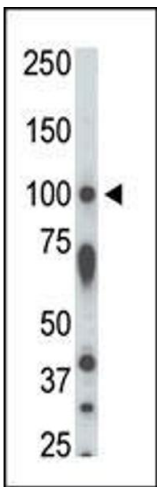
Handling

Format:	Liquid
Buffer:	Purified polyclonal antibody supplied in PBS with 0.09 % (W/V) sodium azide.
Preservative:	Sodium azide
Precaution of Use:	This product contains Sodium azide: a POISONOUS AND HAZARDOUS SUBSTANCE which should be handled by trained staff only.
Storage:	4 °C,-20 °C
Storage Comment:	Maintain refrigerated at 2-8 °C for up to 6 months. For long term storage store at -20 °C in small aliquots to prevent freeze-thaw cycles.
Expiry Date:	6 months



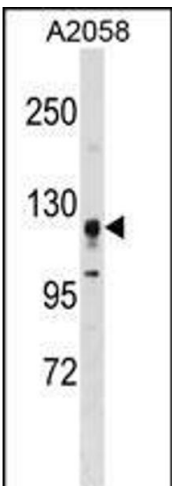
Immunohistochemistry (Paraffin-embedded Sections)

Image 1. Formalin-fixed and paraffin-embedded human cancer tissue reacted with the primary antibody, which was peroxidase-conjugated to the secondary antibody, followed by DAB staining. This data demonstrates the use of this antibody for immunohistochemistry, clinical relevance has not been evaluated. BC = breast carcinoma, HC = hepatocarcinoma.



Western Blotting

Image 2. The anti-STK31 Pab (ABIN391358 and ABIN2841378) is used in Western blot to detect STK31 in rat testis tissue lysate.



Western Blotting

Image 3. STK31 Antibody (F47) (ABIN391358 and ABIN2841378) western blot analysis in cell line lysates (35 μ g/lane). This demonstrates the STK31 antibody detected the STK31 protein (arrow).