

Datasheet for ABIN391361
anti-STK35 antibody (AA 374-404)[Go to Product page](#)

3 Images

Overview

Quantity:	400 µL
Target:	STK35
Binding Specificity:	AA 374-404
Reactivity:	Human, Mouse
Host:	Rabbit
Clonality:	Polyclonal
Conjugate:	This STK35 antibody is un-conjugated
Application:	Western Blotting (WB), Immunohistochemistry (Paraffin-embedded Sections) (IHC (p))

Product Details

Immunogen:	This STK35 antibody is generated from rabbits immunized with a KLH conjugated synthetic peptide between 374-404 amino acids from the Central region of human STK35.
Clone:	RB3600
Isotype:	Ig Fraction
Purification:	This antibody is prepared by Saturated Ammonium Sulfate (SAS) precipitation followed by dialysis against PBS.

Target Details

Target:	STK35
Alternative Name:	STK35 (STK35 Products)

Target Details

Background: STK35 can interact with PDLIM1/CLP-36 in the cytoplasm and localize to actin stress fibers. The encoded kinase may be a regulator of actin stress fibers in nonmuscle cells. This protein has also been found in the nucleus.

Molecular Weight: 58051

Gene ID: 140901

NCBI Accession: [NP_543026](#)

UniProt: [Q8TDR2](#)

Application Details

Application Notes: WB: 1:1000. WB: 1:1000. IHC-P: 1:50~100

Restrictions: For Research Use only

Handling

Format: Liquid

Buffer: Purified polyclonal antibody supplied in PBS with 0.09 % (W/V) sodium azide.

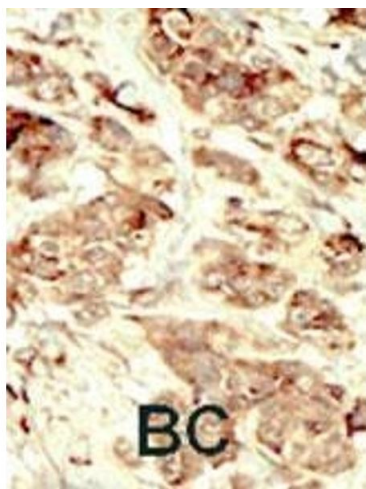
Preservative: Sodium azide

Precaution of Use: This product contains Sodium azide: a POISONOUS AND HAZARDOUS SUBSTANCE which should be handled by trained staff only.

Storage: 4 °C, -20 °C

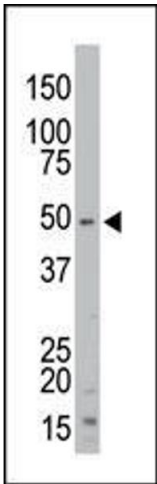
Storage Comment: Maintain refrigerated at 2-8 °C for up to 6 months. For long term storage store at -20 °C in small aliquots to prevent freeze-thaw cycles.

Expiry Date: 6 months



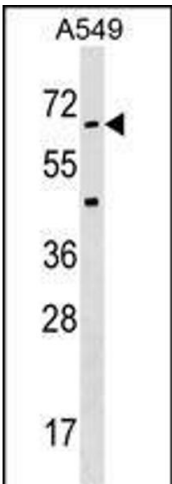
Immunohistochemistry (Paraffin-embedded Sections)

Image 1. Formalin-fixed and paraffin-embedded human cancer tissue reacted with the primary antibody, which was peroxidase-conjugated to the secondary antibody, followed by DAB staining. This data demonstrates the use of this antibody for immunohistochemistry, clinical relevance has not been evaluated. BC = breast carcinoma, HC = hepatocarcinoma.



Western Blotting

Image 2. The anti-STK35 Pab (ABIN391361 and ABIN2841380) is used in Western blot to detect STK35 in mouse kidney tissue lysate.



Western Blotting

Image 3. STK35 Antibody (ABIN391361 and ABIN2841380) western blot analysis in A549 cell line lysates (35 μ g/lane). This demonstrates the STK35 antibody detected the STK35 protein (arrow).