

Datasheet for ABIN391376

anti-CAMK1G antibody (C-Term)

3 Images

1 Publication

[Go to Product page](#)

Overview

Quantity:	400 µL
Target:	CAMK1G
Binding Specificity:	AA 420-450, C-Term
Reactivity:	Human
Host:	Rabbit
Clonality:	Polyclonal
Conjugate:	This CAMK1G antibody is un-conjugated
Application:	Western Blotting (WB), Immunohistochemistry (Paraffin-embedded Sections) (IHC (p))

Product Details

Immunogen:	This CAMK1G (CaMKI gamma) antibody is generated from rabbits immunized with a KLH conjugated synthetic peptide between 420-450 amino acids from the C-terminal region of human CAMK1G (CaMKI gamma).
Clone:	RB1249
Isotype:	Ig Fraction
Purification:	This antibody is prepared by Saturated Ammonium Sulfate (SAS) precipitation followed by dialysis against PBS.

Target Details

Target:	CAMK1G
Alternative Name:	CAMK1G (CaMKI gamma) (CAMK1G Products)

Target Details

Background: Ca²⁺/calmodulin-dependent protein kinase I (CaMKI) constitutes a family of closely related isoforms (alpha, beta and gamma). CLICK-III/CaMKIgamma is a novel membrane-anchored neuronal Ca²⁺/calmodulin-dependent protein kinase. AMKIgamma is abundant in neurons, particularly in the amygdala and ventromedial hypothalamus. Like the other CaMKI isoforms, full activation of CLICK-III/CaMKIgamma requires both Ca(2+)/CaM and phosphorylation by CaMKK.

Molecular Weight: 53087

Gene ID: 57172

NCBI Accession: [NP_065172](#)

UniProt: [Q96NX5](#)

Application Details

Application Notes: WB: 1:1000. WB: 1:1000. IHC-P: 1:50~100

Restrictions: For Research Use only

Handling

Format: Liquid

Buffer: Purified polyclonal antibody supplied in PBS with 0.09 % (W/V) sodium azide.

Preservative: Sodium azide

Precaution of Use: This product contains Sodium azide: a POISONOUS AND HAZARDOUS SUBSTANCE which should be handled by trained staff only.

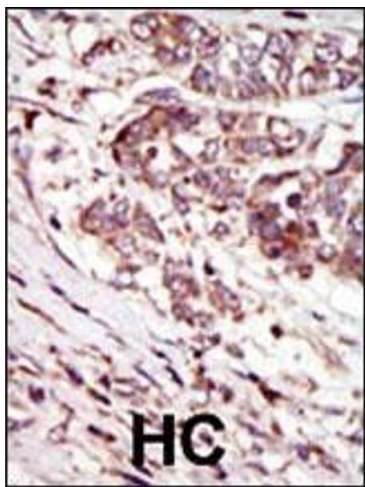
Storage: 4 °C, -20 °C

Storage Comment: Maintain refrigerated at 2-8 °C for up to 6 months. For long term storage store at -20 °C in small aliquots to prevent freeze-thaw cycles.

Expiry Date: 6 months

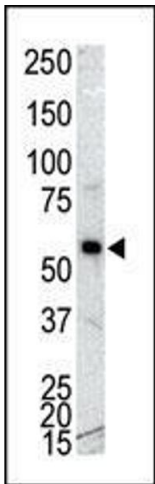
Publications

Product cited in: Ewing, Chu, Elisma, Li, Taylor, Climie, McBroom-Cerajewski, Robinson, OConnor, Li, Taylor, Dharsee, Ho, Heilbut, Moore, Zhang, Ornatsky, Bukhman, Ethier, Sheng, Vasilescu, Abu-Farha, Lambert, Duewel et al.: "Large-scale mapping of human protein-protein interactions by mass spectrometry. ..." in: **Molecular systems biology**, Vol. 3, pp. 89, (2007) ([PubMed](#)).



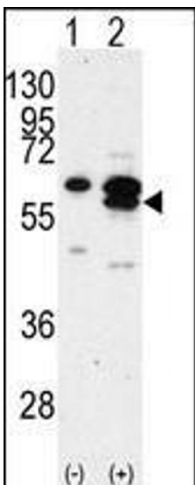
Immunohistochemistry (Paraffin-embedded Sections)

Image 1. Formalin-fixed and paraffin-embedded human cancer tissue reacted with the primary antibody, which was peroxidase-conjugated to the secondary antibody, followed by AEC staining. This data demonstrates the use of this antibody for immunohistochemistry, clinical relevance has not been evaluated. BC = breast carcinoma, HC = hepatocarcinoma.



Western Blotting

Image 2. Western blot analysis of anti-CK 1G Pab (ABIN391376 and ABIN2841387) in NCI- cell lysate. CK 1G (arrow) was detected using purified Pab. Secondary HRP-anti-rabbit was used for signal visualization with chemiluminescence.



Western Blotting

Image 3. Western blot analysis of CK1G (arrow) using rabbit polyclonal CK1G Antibody (C-term) (R). 293 cell lysates (2 μ g/lane) either nontransfected (Lane 1) or transiently transfected with the CK1G gene (Lane 2) (Origene Technologies).