

Datasheet for ABIN391377
anti-CAMK1G antibody (AA 211-241)[Go to Product page](#)

3 Images

Overview

Quantity:	400 µL
Target:	CAMK1G
Binding Specificity:	AA 211-241
Reactivity:	Human
Host:	Rabbit
Clonality:	Polyclonal
Conjugate:	This CAMK1G antibody is un-conjugated
Application:	Western Blotting (WB), Immunohistochemistry (Paraffin-embedded Sections) (IHC (p))

Product Details

Immunogen:	This CAMK1G antibody is generated from rabbits immunized with a KLH conjugated synthetic peptide between 211-241 amino acids from the Central region of human CAMK1G.
Clone:	RB15447
Isotype:	Ig Fraction
Predicted Reactivity:	M, Rat
Purification:	This antibody is prepared by Saturated Ammonium Sulfate (SAS) precipitation followed by dialysis against PBS.

Target Details

Target:	CAMK1G
---------	--------

Target Details

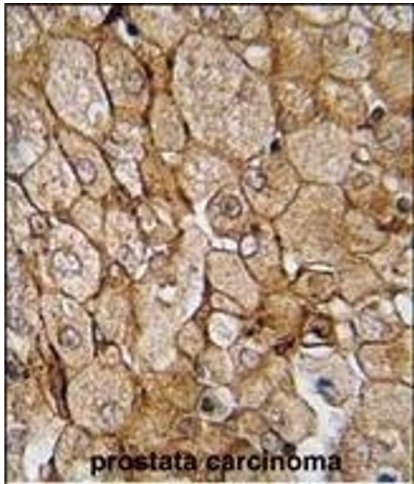
Alternative Name:	CAMK1G (CAMK1G Products)
Background:	Ca ²⁺ /calmodulin-dependent protein kinase I (CaMKI) constitutes a family of closely related isoforms (alpha, beta and gamma). CLICK-III/CaMKIgamma is a novel membrane-anchored neuronal Ca ²⁺ /calmodulin-dependent protein kinase. AMKIgamma is abundant in neurons, particularly in the amygdala and ventromedial hypothalamus. Like the other CaMKI isoforms, full activation of CLICK-III/CaMKIgamma requires both Ca(2+)/CaM and phosphorylation by CaMKK.
Molecular Weight:	53087
Gene ID:	57172
NCBI Accession:	NP_065172
UniProt:	Q96NX5

Application Details

Application Notes:	WB: 1:1000. WB: 1:1000. IHC-P: 1:10~50
Restrictions:	For Research Use only

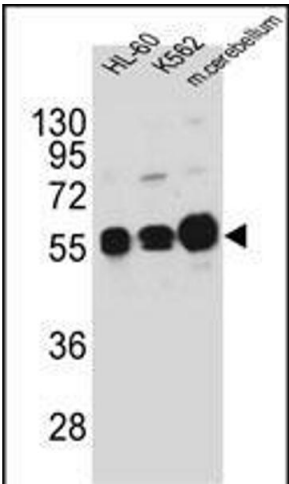
Handling

Format:	Liquid
Buffer:	Purified polyclonal antibody supplied in PBS with 0.09 % (W/V) sodium azide.
Preservative:	Sodium azide
Precaution of Use:	This product contains Sodium azide: a POISONOUS AND HAZARDOUS SUBSTANCE which should be handled by trained staff only.
Storage:	4 °C,-20 °C
Storage Comment:	Maintain refrigerated at 2-8 °C for up to 6 months. For long term storage store at -20 °C in small aliquots to prevent freeze-thaw cycles.
Expiry Date:	6 months



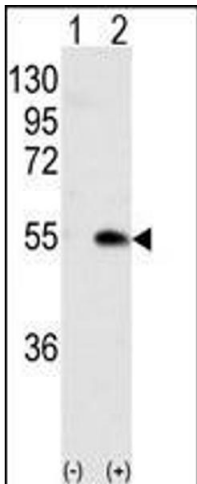
Immunohistochemistry (Paraffin-embedded Sections)

Image 1. Formalin-fixed and paraffin-embedded human prostate carcinoma tissue reacted with CK1G (Center) (ABIN391377 and ABIN2841388) , which was peroxidase-conjugated to the secondary antibody, followed by DAB staining. This data demonstrates the use of this antibody for immunohistochemistry, clinical relevance has not been evaluated.



Western Blotting

Image 2. CK1G Antibody (Center) (ABIN391377 and ABIN2841388) western blot analysis in HL-60,K562 cell line and mouse cerebellum tissue lysates (35 µg/lane).This demonstrates the CK1G antibody detected the CK1G protein (arrow).



Western Blotting

Image 3. Western blot analysis of CK1G (arrow) using rabbit polyclonal CK1G (Center) Antibody (ABIN391377 and ABIN2841388). 293 cell lysates (2 µg/lane) either nontransfected (Lane 1) or transiently transfected with CK1G gene (Lane 2) (Origene Technologies).