

Datasheet for ABIN391417
anti-NPX1 antibody (AA 174-203)[Go to Product page](#)

3 Images

Overview

Quantity:	400 µL
Target:	NPX1
Binding Specificity:	AA 174-203
Reactivity:	Human, Rat
Host:	Rabbit
Clonality:	Polyclonal
Conjugate:	This NPX1 antibody is un-conjugated
Application:	Western Blotting (WB), Immunohistochemistry (Paraffin-embedded Sections) (IHC (p))

Product Details

Immunogen:	This NP1(Nptx1) antibody is generated from rabbits immunized with a KLH conjugated synthetic peptide between 174-203 amino acids from the Central region of rat NP1(Nptx1).
Clone:	RB8976
Isotype:	Ig Fraction
Predicted Reactivity:	M
Purification:	This antibody is purified through a protein G column, followed by dialysis against PBS.

Target Details

Target:	NPX1
Alternative Name:	NP1 (Nptx1) (NPX1 Products)

Target Details

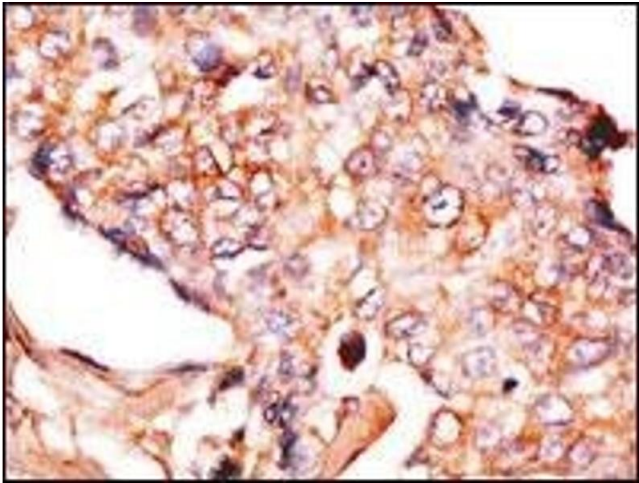
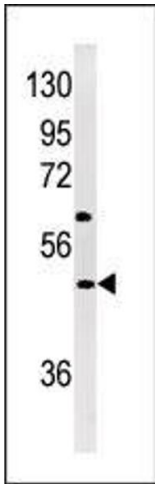
Background:	NPTX1 is a member of the neuronal pentraxin family. Human neuronal pentraxin 1 is similar to rat NP1 which is a binding protein for the snake venom toxin taipoxin.
Molecular Weight:	47216
Gene ID:	266777
NCBI Accession:	NP_714957
UniProt:	P47971
Pathways:	Carbohydrate Homeostasis , Regulation of Cell Size , Signaling Events mediated by VEGFR1 and VEGFR2 , Smooth Muscle Cell Migration , Platelet-derived growth Factor Receptor Signaling , VEGFR1 Specific Signals , SARS-CoV-2 Protein Interactome

Application Details

Application Notes:	WB: 1:1000. IHC-P: 1:50~100. IHC-P: 1:50~100
Restrictions:	For Research Use only

Handling

Format:	Liquid
Buffer:	Purified monoclonal antibody supplied in PBS with 0.09 % (W/V) sodium azide.
Preservative:	Sodium azide
Precaution of Use:	This product contains Sodium azide: a POISONOUS AND HAZARDOUS SUBSTANCE which should be handled by trained staff only.
Storage:	4 °C,-20 °C
Storage Comment:	Maintain refrigerated at 2-8 °C for up to 6 months. For long term storage store at -20 °C in small aliquots to prevent freeze-thaw cycles.
Expiry Date:	6 months



Immunohistochemistry (Paraffin-embedded Sections)

Image 1. Formalin-fixed and paraffin-embedded human brain tissue reacted with NP1(Nptx1) Antibody (Center) (ABIN391417 and ABIN2841412) , which was peroxidase-conjugated to the secondary antibody, followed by DAB staining. This data demonstrates the use of this antibody for immunohistochemistry, clinical relevance has not been evaluated.

Western Blotting

Image 2. Western blot analysis of anti-NP1(Nptx1) Antibody (Center) (ABIN391417 and ABIN2841412) in Jurkat cell line lysates (35 µg/lane). NP1(arrow) was detected using the purified Pab.

Immunohistochemistry (Paraffin-embedded Sections)

Image 3. Formalin-fixed and paraffin-embedded human breast carcinoma reacted with anti-NP1(Nptx1) Antibody (Center), which was peroxidase-conjugated to the secondary antibody, followed by DAB staining. This data demonstrates the use of this antibody for immunohistochemistry, clinical relevance has not been evaluated.