



[Go to Product page](#)

Datasheet for ABIN391418
anti-NAE1 antibody (C-Term)

3 Images

Overview

Quantity:	400 µL
Target:	NAE1
Binding Specificity:	AA 430-459, C-Term
Reactivity:	Human
Host:	Rabbit
Clonality:	Polyclonal
Conjugate:	This NAE1 antibody is un-conjugated
Application:	Western Blotting (WB), Immunohistochemistry (Paraffin-embedded Sections) (IHC (p))

Product Details

Immunogen:	This NAE1 (APPBP1) antibody is generated from rabbits immunized with a KLH conjugated synthetic peptide between 430-459 amino acids from the C-terminal region of human NAE1 (APPBP1).
Clone:	RB8977
Isotype:	Ig Fraction
Predicted Reactivity:	Pr, M, Rat
Purification:	This antibody is purified through a protein G column, followed by dialysis against PBS.

Target Details

Target:	NAE1
---------	------

Target Details

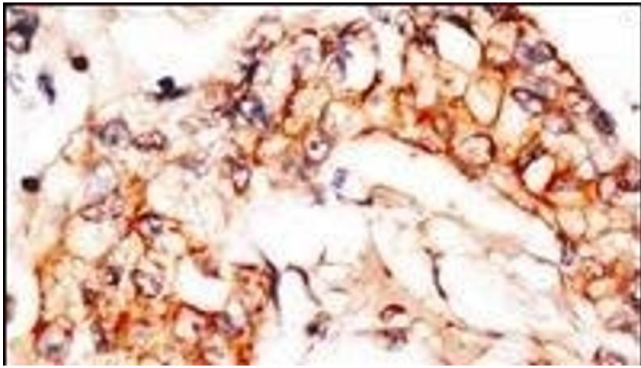
Alternative Name:	NAE1 (APPBP1) (NAE1 Products)
Background:	APPBP1 binds to the beta-amyloid precursor protein, a cell surface protein with signal-transducing properties thought to play a role in the pathogenesis of Alzheimer's disease. In addition, this protein can form a heterodimer with UBE1C and bind and activate NEDD8, a ubiquitin-like protein. APPBP1 is required for cell cycle progression through the S/M checkpoint.
Molecular Weight:	60246
Gene ID:	8883
NCBI Accession:	NP_001018169 , NP_001018170 , NP_003896
UniProt:	Q13564

Application Details

Application Notes:	WB: 1:1000. WB: 1:1000. IHC-P: 1:50~100
Restrictions:	For Research Use only

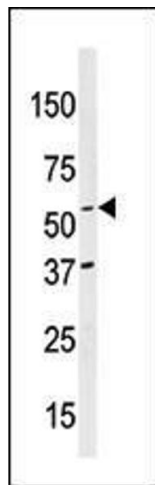
Handling

Format:	Liquid
Buffer:	Purified monoclonal antibody supplied in PBS with 0.09 % (W/V) sodium azide.
Preservative:	Sodium azide
Precaution of Use:	This product contains Sodium azide: a POISONOUS AND HAZARDOUS SUBSTANCE which should be handled by trained staff only.
Storage:	4 °C,-20 °C
Storage Comment:	Maintain refrigerated at 2-8 °C for up to 6 months. For long term storage store at -20 °C in small aliquots to prevent freeze-thaw cycles.
Expiry Date:	6 months



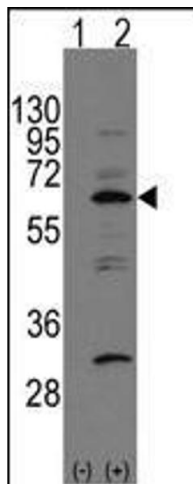
Immunohistochemistry (Paraffin-embedded Sections)

Image 1. Formalin-fixed and paraffin-embedded human breast carcinoma reacted with anti-PBP1 Antibody (C-term), which was peroxidase-conjugated to the secondary antibody, followed by DAB staining. This data demonstrates the use of this antibody for immunohistochemistry, clinical relevance has not been evaluated.



Western Blotting

Image 2. Western blot analysis of anti-PBP1 Antibody (C-term) 7273b in mouse brain tissue lysates (35 µg/lane). PBP1 (arrow) was detected using the purified Pab.



Western Blotting

Image 3. Western blot analysis of P-BP1 (arrow) using rabbit polyclonal P-BP1 Antibody (C-term) 7273b. 293 cell lysates (2 µg/lane) either nontransfected (Lane 1) or transiently transfected with the P-BP1 gene (Lane 2) (Origene Technologies).