

Datasheet for ABIN391423  
**anti-APPBP2 antibody (AA 242-271)**[Go to Product page](#)

## 1 Image

## Overview

Quantity:	400 µL
Target:	APPBP2
Binding Specificity:	AA 242-271
Reactivity:	Human
Host:	Rabbit
Clonality:	Polyclonal
Conjugate:	This APPBP2 antibody is un-conjugated
Application:	Western Blotting (WB)

## Product Details

Immunogen:	This PAT1(APPBP2) antibody is generated from rabbits immunized with a KLH conjugated synthetic peptide between 242-271 amino acids from the Central region of human PAT1(APPBP2).
Clone:	RB8985
Isotype:	Ig Fraction
Predicted Reactivity:	M, Rat
Purification:	This antibody is purified through a protein G column, followed by dialysis against PBS.

## Target Details

Target:	APPBP2
---------	--------

## Target Details

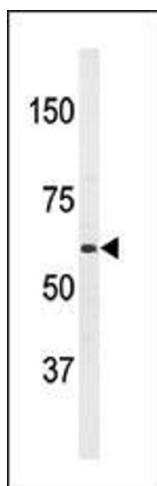
Alternative Name:	PAT1 (APPBP2) ( <a href="#">APPBP2 Products</a> )
Background:	APPBP2 interacts with microtubules and is functionally associated with beta-amyloid precursor protein transport and/or processing. The beta-amyloid precursor protein is a cell surface protein with signal-transducing properties, and it is thought to play a role in the pathogenesis of Alzheimer's disease. This protein has been found to be highly expressed in breast cancer.
Molecular Weight:	66853
Gene ID:	10513
NCBI Accession:	<a href="#">NP_006371</a>
UniProt:	<a href="#">Q92624</a>

## Application Details

Application Notes:	WB: 1:1000
Restrictions:	For Research Use only

## Handling

Format:	Liquid
Buffer:	Purified monoclonal antibody supplied in PBS with 0.09 % (W/V) sodium azide.
Preservative:	Sodium azide
Precaution of Use:	This product contains Sodium azide: a POISONOUS AND HAZARDOUS SUBSTANCE which should be handled by trained staff only.
Storage:	4 °C,-20 °C
Storage Comment:	Maintain refrigerated at 2-8 °C for up to 6 months. For long term storage store at -20 °C in small aliquots to prevent freeze-thaw cycles.
Expiry Date:	6 months



#### Western Blotting

**Image 1.** Western blot analysis of anti-T1(PBP2) Antibody (Center) 7274c in HL60 cell line lysates (35 µg/lane). T1 (arrow) was detected using the purified b.