

Datasheet for ABIN391426
anti-BARX1 antibody (C-Term)[Go to Product page](#)

2 Images

Overview

Quantity:	400 µL
Target:	BARX1
Binding Specificity:	AA 213-243, C-Term
Reactivity:	Human
Host:	Rabbit
Clonality:	Polyclonal
Conjugate:	This BARX1 antibody is un-conjugated
Application:	Western Blotting (WB)

Product Details

Immunogen:	This BarX1 antibody is generated from rabbits immunized with a KLH conjugated synthetic peptide between 213-243 amino acids from the C-terminal region of human BarX1.
Clone:	RB13838
Isotype:	Ig Fraction
Purification:	This antibody is prepared by Saturated Ammonium Sulfate (SAS) precipitation followed by dialysis against PBS.

Target Details

Target:	BARX1
Alternative Name:	BarX1 (BARX1 Products)

Target Details

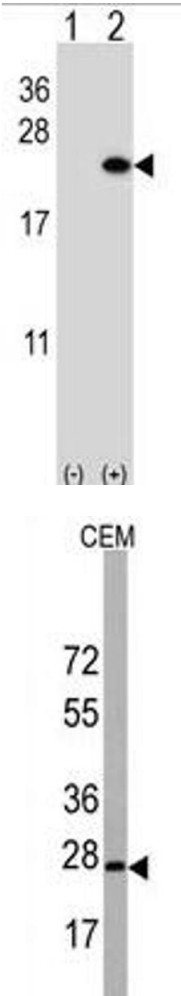
Background:	BarX1 is a member of the Bar subclass of homeobox transcription factors. Studies of the mouse and chick homolog suggest the encoded protein may play a role in developing teeth and craniofacial mesenchyme of neural crest origin. The protein may also be associated with differentiation of stomach epithelia.
Molecular Weight:	27298
Gene ID:	56033
NCBI Accession:	NP_067545
UniProt:	Q9HBU1
Pathways:	Sensory Perception of Sound

Application Details

Application Notes:	WB: 1:1000. WB: 1:1000
Restrictions:	For Research Use only

Handling

Format:	Liquid
Buffer:	Purified polyclonal antibody supplied in PBS with 0.09 % (W/V) sodium azide.
Preservative:	Sodium azide
Precaution of Use:	This product contains Sodium azide: a POISONOUS AND HAZARDOUS SUBSTANCE which should be handled by trained staff only.
Storage:	4 °C,-20 °C
Storage Comment:	Maintain refrigerated at 2-8 °C for up to 6 months. For long term storage store at -20 °C in small aliquots to prevent freeze-thaw cycles.
Expiry Date:	6 months



Western Blotting

Image 1. Western blot analysis of BarX1 (arrow) using rabbit polyclonal BarX1 Antibody (C-term) (ABIN391426 and ABIN2841419). 293 cell lysates (2 µg/lane) either nontransfected (Lane 1) or transiently transfected (Lane 2) with the BarX1 gene.

Western Blotting

Image 2. Western blot analysis of BarX1 Antibody (C-term) in CEM cell line lysates (35 µg/lane). BarX1 (arrow) was detected using the purified Pab.