

Datasheet for ABIN391427
anti-BARX1 antibody (AA 119-148)



[Go to Product page](#)

2 Images

Overview

Quantity:	400 µL
Target:	BARX1
Binding Specificity:	AA 119-148
Reactivity:	Human
Host:	Rabbit
Clonality:	Polyclonal
Conjugate:	This BARX1 antibody is un-conjugated
Application:	Western Blotting (WB)

Product Details

Immunogen:	This BarX1 antibody is generated from rabbits immunized with a KLH conjugated synthetic peptide between 119-148 amino acids from the Central region of human BarX1.
Clone:	RB14083
Isotype:	Ig Fraction
Purification:	This antibody is prepared by Saturated Ammonium Sulfate (SAS) precipitation followed by dialysis against PBS.

Target Details

Target:	BARX1
Alternative Name:	BarX1 (BARX1 Products)

Target Details

Background: BarX1 is a member of the Bar subclass of homeobox transcription factors. Studies of the mouse and chick homolog suggest this protein may play a role in developing teeth and craniofacial mesenchyme of neural crest origin. The protein may also be associated with differentiation of stomach epithelia.

Molecular Weight: 27298

Gene ID: 56033

NCBI Accession: [NP_067545](#)

UniProt: [Q9HBU1](#)

Pathways: [Sensory Perception of Sound](#)

Application Details

Application Notes: WB: 1:1000. WB: 1:1000

Restrictions: For Research Use only

Handling

Format: Liquid

Buffer: Purified polyclonal antibody supplied in PBS with 0.09 % (W/V) sodium azide.

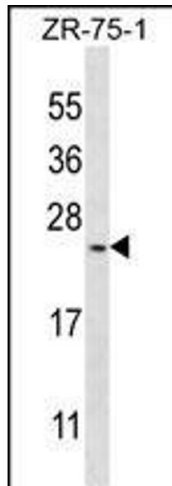
Preservative: Sodium azide

Precaution of Use: This product contains Sodium azide: a POISONOUS AND HAZARDOUS SUBSTANCE which should be handled by trained staff only.

Storage: 4 °C,-20 °C

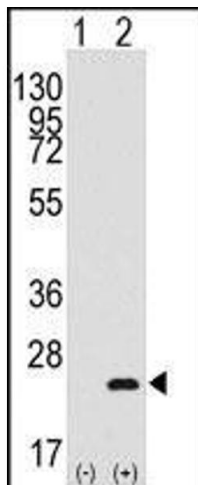
Storage Comment: Maintain refrigerated at 2-8 °C for up to 6 months. For long term storage store at -20 °C in small aliquots to prevent freeze-thaw cycles.

Expiry Date: 6 months



Western Blotting

Image 1. BarX1 Antibody (C-term) (ABIN391427 and ABIN2841420) western blot analysis in ZR-75-1 cell line lysates (35 µg/lane). This demonstrates the BarX1 antibody detected the BarX1 protein (arrow).



Western Blotting

Image 2. Western blot analysis of BarX1 (arrow) using rabbit polyclonal BarX1 Antibody (C-term) (R). 293 cell lysates (2 µg/lane) either nontransfected (Lane 1) or transiently transfected with the BarX1 gene (Lane 2) (Origene Technologies).