

Datasheet for ABIN391430
anti-EN1 antibody (N-Term)

5 Images

1 Publication

[Go to Product page](#)

Overview

Quantity:	200 µL
Target:	EN1
Binding Specificity:	AA 1-30, N-Term
Reactivity:	Human, Mouse
Host:	Rabbit
Clonality:	Polyclonal
Conjugate:	This EN1 antibody is un-conjugated
Application:	Western Blotting (WB), Immunohistochemistry (Paraffin-embedded Sections) (IHC (p)), Immunofluorescence (IF)

Product Details

Immunogen:	This EN1 (Engrailed 1) antibody is generated from rabbits immunized with a KLH conjugated synthetic peptide between 1-30 amino acids from the N-terminal region of human EN1 (Engrailed 1).
Clone:	RB13885
Isotype:	Ig Fraction
Purification:	This antibody is purified through a protein A column, followed by peptide affinity purification.

Target Details

Target:	EN1
Alternative Name:	EN1 (Engrailed 1) (EN1 Products)

Target Details

Background:	Homeobox-containing genes are thought to have a role in controlling development. In Drosophila, the 'engrailed' (en) gene plays an important role during development in segmentation, where it is required for the formation of posterior compartments. Different mutations in the mouse homologs, En1 and En2, produced different developmental defects that frequently are lethal. The human engrailed homologs 1 and 2 encode homeodomain-containing proteins and have been implicated in the control of pattern formation during development of the central nervous system.
Molecular Weight:	40115
Gene ID:	2019
NCBI Accession:	NP_001417
UniProt:	Q05925
Pathways:	Dopaminergic Neurogenesis

Application Details

Application Notes:	IF: 1:10~50. IF: 1:25. WB: 1:2000. IHC-P: 1:10~50. IHC-P: 1:25
Restrictions:	For Research Use only

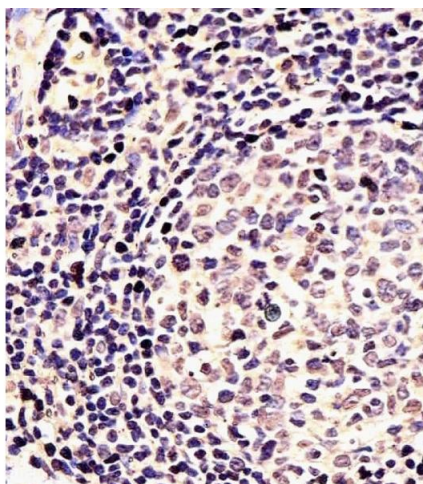
Handling

Format:	Liquid
Buffer:	Purified polyclonal antibody supplied in PBS with 0.09 % (W/V) sodium azide.
Preservative:	Sodium azide
Precaution of Use:	This product contains Sodium azide: a POISONOUS AND HAZARDOUS SUBSTANCE which should be handled by trained staff only.
Storage:	4 °C,-20 °C
Storage Comment:	Maintain refrigerated at 2-8 °C for up to 6 months. For long term storage store at -20 °C in small aliquots to prevent freeze-thaw cycles.
Expiry Date:	6 months

Publications

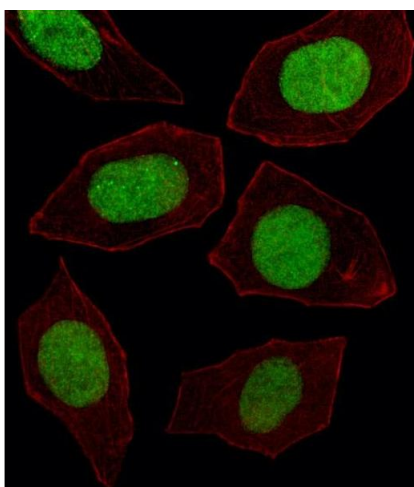
Product cited in:	Bolomini-Vittori, Montresor, Giagulli, Staunton, Rossi, Martinello, Constantin, Laudanna: "
-------------------	---

Regulation of conformer-specific activation of the integrin LFA-1 by a chemokine-triggered Rho signaling module." in: **Nature immunology**, Vol. 10, Issue 2, pp. 185-94, (2009) ([PubMed](#)).



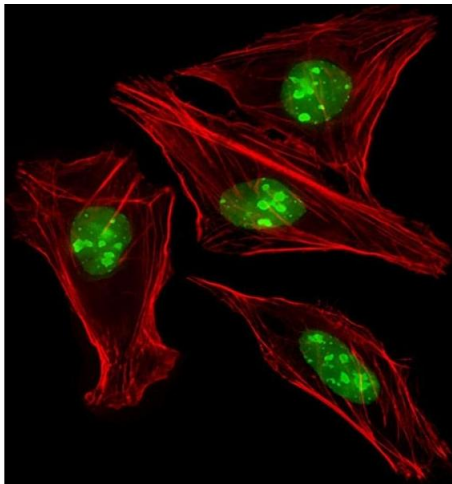
Immunohistochemistry (Paraffin-embedded Sections)

Image 1. (ABIN391430 and ABIN2841422) staining EN1 in Human tonsil tissue sections by Immunohistochemistry (IHC-P - paraformaldehyde-fixed, paraffin-embedded sections). Tissue was fixed with formaldehyde and blocked with 3 % BSA for 0.5 hour at room temperature, antigen retrieval was by heat mediation with a citrate buffer (pH 6). Samples were incubated with primary antibody (1/25) for 1 hours at 37 °C. A undiluted biotinylated goat polyvalent antibody was used as the secondary antibody.



Immunofluorescence

Image 2. Fluorescent image of cell stained with EN1 Antibody (N-term) (ABIN391430 and ABIN2841422). cells were fixed with 4 % PFA (20 min), permeabilized with Triton X-100 (0.1 %, 10 min), then incubated with EN1 primary antibody (1:25, 1 h at 37 °C). For secondary antibody, Alexa Fluor® 488 conjugated donkey anti-rabbit antibody (green) was used (1:400, 50 min at 37 °C). Cytoplasmic actin was counterstained with Alexa Fluor® 555 (red) conjugated Phalloidin (7 units/mL, 1 h at 37 °C). EN1 immunoreactivity is localized to Nucleus significantly.



Immunofluorescence

Image 3. Immunofluorescent analysis of 4 % paraformaldehyde-fixed, 0.1 % Triton X-100 permeabilized U-2 OS (Human Sarcoma cell line) cells labeling HME1 with (ABIN391430 and ABIN2841422) at 1/25 dilution, followed by Alexa Fluor 488-conjugated goat anti-rabbit IgG (1583138) secondary antibody at 1/400 dilution (green). Immunofluorescence image showing nucleus and nucleoli staining on U-2 OS cell line. Cytoplasmic actin is detected with Alexa Fluor® 555 conjugated with Phalloidin (OB16636430) at 1/100 dilution (red).

Please check the [product details page](#) for more images. Overall 5 images are available for ABIN391430.