

Datasheet for ABIN391447
anti-SPAG9 antibody (AA 603-632)[Go to Product page](#)

2 Images

Overview

Quantity:	400 µL
Target:	SPAG9
Binding Specificity:	AA 603-632
Reactivity:	Human
Host:	Rabbit
Clonality:	Polyclonal
Conjugate:	This SPAG9 antibody is un-conjugated
Application:	Western Blotting (WB), Immunohistochemistry (Paraffin-embedded Sections) (IHC (p))

Product Details

Immunogen:	This JLP (SPAG9) antibody is generated from rabbits immunized with a KLH conjugated synthetic peptide between 603-632 amino acids from the Central region of human JLP (SPAG9).
Clone:	RB13953
Isotype:	Ig Fraction
Predicted Reactivity:	M
Purification:	This antibody is prepared by Saturated Ammonium Sulfate (SAS) precipitation followed by dialysis against PBS.

Target Details

Target:	SPAG9
---------	-------

Target Details

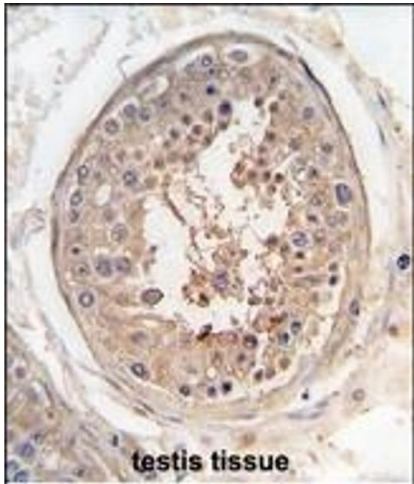
Alternative Name:	JLP (SPAG9) (SPAG9 Products)
Background:	SPAG9, which is abundantly expressed in testicular haploid germ cells, is recognized by sperm-agglutinating antibodies and implicated in infertility.
Molecular Weight:	146205
Gene ID:	9043
NCBI Accession:	NP_001123999 , NP_001124000 , NP_001238900 , NP_003962
UniProt:	O60271
Pathways:	Regulation of Muscle Cell Differentiation

Application Details

Application Notes:	WB: 1:1000. IHC-P: 1:10~50
Restrictions:	For Research Use only

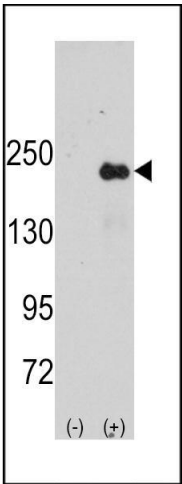
Handling

Format:	Liquid
Buffer:	Purified polyclonal antibody supplied in PBS with 0.09 % (W/V) sodium azide.
Preservative:	Sodium azide
Precaution of Use:	This product contains Sodium azide: a POISONOUS AND HAZARDOUS SUBSTANCE which should be handled by trained staff only.
Storage:	4 °C,-20 °C
Storage Comment:	Maintain refrigerated at 2-8 °C for up to 6 months. For long term storage store at -20 °C in small aliquots to prevent freeze-thaw cycles.
Expiry Date:	6 months



Immunohistochemistry (Paraffin-embedded Sections)

Image 1. Formalin-fixed and raffin-embedded human testis tissue reacted with SG9 antibody (Center) (ABIN391447 and ABIN2841430) , which was peroxidase-conjugated to the secondary antibody, followed by DAB staining. This data demonstrates the use of this antibody for immunohistochemistry, clinical relevance has not been evaluated.



Western Blotting

Image 2. Western blot analysis of SG9 (arrow) using rabbit polyclonal SG9 Antibody (Center) (ABIN391447 and ABIN2841430). 293 cell lysates (2 µg/lane) either nontransfected (Lane 1) or transiently transfected with the SG9 gene (Lane 2) (Origene Technologies).