



[Go to Product page](#)

Datasheet for ABIN391458  
**anti-DDR1 antibody (AA 299-330)**

5 Images

### Overview

Quantity:	400 µL
Target:	DDR1
Binding Specificity:	AA 299-330
Reactivity:	Human
Host:	Rabbit
Clonality:	Polyclonal
Conjugate:	This DDR1 antibody is un-conjugated
Application:	Western Blotting (WB), Immunohistochemistry (Paraffin-embedded Sections) (IHC (p)), Flow Cytometry (FACS), Immunofluorescence (IF)

### Product Details

Immunogen:	This DDR1 antibody is generated from rabbits immunized with a KLH conjugated synthetic peptide between 299-330 amino acids from the Central region of human DDR1.
Clone:	RB14442
Isotype:	Ig Fraction
Purification:	This antibody is purified through a protein A column, followed by peptide affinity purification.

### Target Details

Target:	DDR1
Alternative Name:	DDR1 ( <a href="#">DDR1 Products</a> )

## Target Details

---

Background:	Receptor tyrosine kinases (RTKs) play a key role in the communication of cells with their microenvironment. These molecules are involved in the regulation of cell growth, differentiation and metabolism. DDR1 is an RTK that is widely expressed in normal and transformed epithelial cells and is activated by various types of collagen. It belongs to a subfamily of tyrosine kinase receptors with a homology region to the Dictyostelium discoideum protein discoidin I in their extracellular domain. Its autophosphorylation is achieved by all collagens so far tested (type I to type VI). In situ studies and Northern-blot analysis show that expression of DDR1 is restricted to epithelial cells, particularly in the kidney, lung, gastrointestinal tract, and brain. In addition, it is significantly over-expressed in several human tumors from breast, ovarian, esophageal, and pediatric brain.
Molecular Weight:	101128
Gene ID:	780
NCBI Accession:	<a href="#">NP_001189450</a> , <a href="#">NP_001189451</a> , <a href="#">NP_001189452</a> , <a href="#">NP_001945</a> , <a href="#">NP_054699</a> , <a href="#">NP_054700</a>
UniProt:	<a href="#">Q08345</a>
Pathways:	<a href="#">RTK Signaling</a> , <a href="#">Smooth Muscle Cell Migration</a>

## Application Details

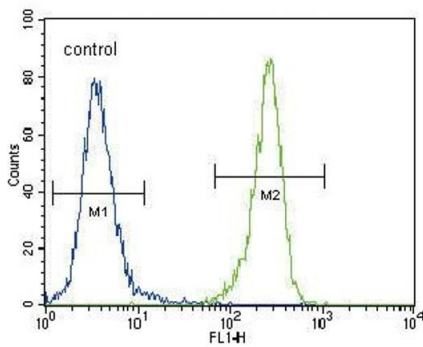
---

Application Notes:	IF: 1:10~50. WB: 1:500. IHC-P: 1:100. IHC-P: 1:100. FC: 1:10~50
Restrictions:	For Research Use only

## Handling

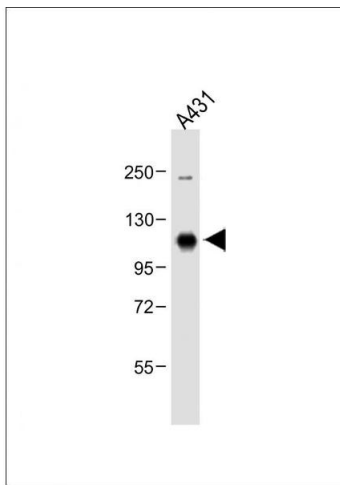
---

Format:	Liquid
Buffer:	Purified polyclonal antibody supplied in PBS with 0.09 % (W/V) sodium azide.
Preservative:	Sodium azide
Precaution of Use:	This product contains Sodium azide: a POISONOUS AND HAZARDOUS SUBSTANCE which should be handled by trained staff only.
Storage:	4 °C,-20 °C
Storage Comment:	Maintain refrigerated at 2-8 °C for up to 6 months. For long term storage store at -20 °C in small aliquots to prevent freeze-thaw cycles.
Expiry Date:	6 months



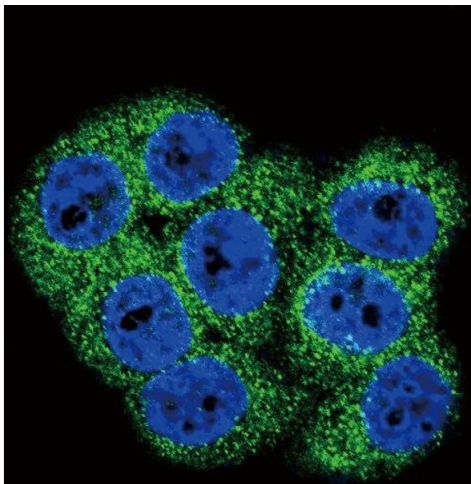
### Flow Cytometry

**Image 1.** DDR1 Antibody (Center) (ABIN391458 and ABIN2841434) flow cytometric analysis of 293 cells (right histogram) compared to a negative control cell (left histogram). FITC-conjugated goat-anti-rabbit secondary antibodies were used for the analysis.



### Western Blotting

**Image 2.** Anti-DDR1 Antibody (Center) at 1:500 dilution + A431 whole cell lysate Lysates/proteins at 20 µg per lane. Secondary Goat Anti-Rabbit IgG, (H+L), Peroxidase conjugated at 1/10000 dilution. Predicted band size : 101 kDa Blocking/Dilution buffer: 5 % NFDm/TBST.



### Immunofluorescence

**Image 3.** Confocal immunofluorescent analysis of DDR1 Antibody (Center) (ABIN391458 and ABIN2841434) with 293 cell followed by Alexa Fluor 488-conjugated goat anti-rabbit IgG (green). DAPI was used to stain the cell nuclear (blue).

Please check the [product details page](#) for more images. Overall 5 images are available for ABIN391458.