

Datasheet for ABIN391468

**anti-Glutaredoxin 2 antibody (C-Term)****3** Images[Go to Product page](#)

## Overview

Quantity:	400 µL
Target:	Glutaredoxin 2 (GRX2)
Binding Specificity:	AA 120-146, C-Term
Reactivity:	Human, Rat, Mouse
Host:	Rabbit
Clonality:	Polyclonal
Conjugate:	This Glutaredoxin 2 antibody is un-conjugated
Application:	Western Blotting (WB), Flow Cytometry (FACS), Immunohistochemistry (Paraffin-embedded Sections) (IHC (p))

## Product Details

Immunogen:	This GLRX2 antibody is generated from rabbits immunized with a KLH conjugated synthetic peptide between 120-146 amino acids from the C-terminal region of human GLRX2.
Clone:	RB18221
Isotype:	Ig Fraction
Predicted Reactivity:	B
Purification:	This antibody is purified through a protein A column, followed by peptide affinity purification.

## Target Details

Target:	Glutaredoxin 2 (GRX2)
---------	-----------------------

## Target Details

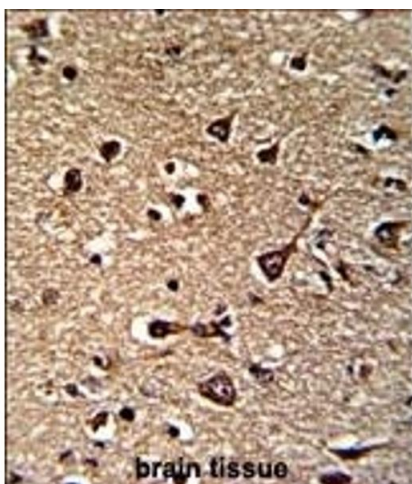
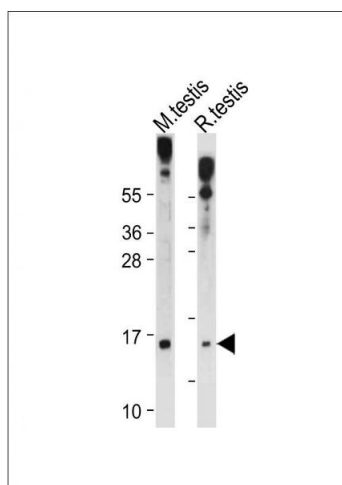
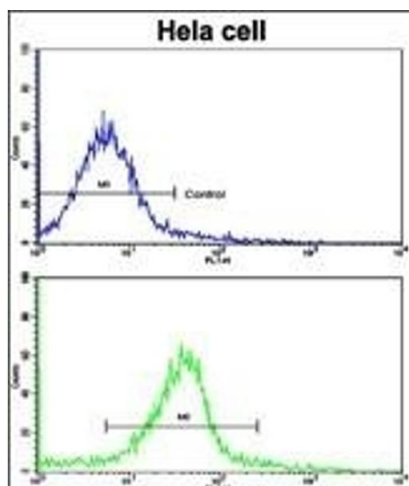
Alternative Name:	GLRX2 ( <a href="#">GRX2 Products</a> )
Background:	GLRX2 are a family of glutathione-dependent hydrogen donors that participate in a variety of cellular redox reactions.
Molecular Weight:	18052
Gene ID:	51022
NCBI Accession:	<a href="#">NP_001230328</a> , <a href="#">NP_057150</a> , <a href="#">NP_932066</a>
UniProt:	<a href="#">Q9NS18</a>
Pathways:	<a href="#">Cell RedoxHomeostasis</a>

## Application Details

Application Notes:	WB: 1:1000. IHC-P: 1:50~100. FC: 1:10~50
Restrictions:	For Research Use only

## Handling

Format:	Liquid
Buffer:	Purified polyclonal antibody supplied in PBS with 0.09 % (W/V) sodium azide.
Preservative:	Sodium azide
Precaution of Use:	This product contains Sodium azide: a POISONOUS AND HAZARDOUS SUBSTANCE which should be handled by trained staff only.
Storage:	4 °C,-20 °C
Storage Comment:	Maintain refrigerated at 2-8 °C for up to 6 months. For long term storage store at -20 °C in small aliquots to prevent freeze-thaw cycles.
Expiry Date:	6 months



### Flow Cytometry

**Image 1.** Flow cytometric analysis of hela cells using GLRX2 Antibody (C-term )(bottom histogram) compared to a negative control cell (top histogram). FITC-conjugated goat-anti-rabbit secondary antibodies were used for the analysis.

### Western Blotting

**Image 2.** All lanes : Anti-GLRX2 Antibody (C-term ) at 1:1000 dilution Lane 1: Mouse testis tissue lysate Lane 2: Rat testis tissue lysate Lysates/proteins at 20 µg per lane. Secondary Goat Anti-Rabbit IgG, (H+L), Peroxidase conjugated at 1/10000 dilution. Predicted band size : 18 kDa Blocking/Dilution buffer: 5 % NFDM/TBST.

### Immunohistochemistry (Paraffin-embedded Sections)

**Image 3.** Formalin-fixed and paraffin-embedded human brain reacted with GLRX2 Antibody (C-term ), which was peroxidase-conjugated to the secondary antibody, followed by DAB staining. This data demonstrates the use of this antibody for immunohistochemistry, clinical relevance has not been evaluated.