



[Go to Product page](#)

Datasheet for ABIN391473
anti-CA14 antibody (N-Term)

3 Images

Overview

Quantity:	400 µL
Target:	CA14
Binding Specificity:	AA 51-80, N-Term
Reactivity:	Human
Host:	Rabbit
Clonality:	Polyclonal
Application:	Western Blotting (WB), Flow Cytometry (FACS)

Product Details

Immunogen:	This CA14 antibody is generated from rabbits immunized with a KLH conjugated synthetic peptide between 51-80 amino acids from the N-terminal region of human CA14.
Clone:	RB18366
Isotype:	Ig Fraction
Purification:	This antibody is prepared by Saturated Ammonium Sulfate (SAS) precipitation followed by dialysis against PBS.

Target Details

Target:	CA14
Alternative Name:	CA14 (CA14 Products)
Background:	CA14 belongs a large family of zinc metalloenzymes that catalyze the versible hydration of carbon dioxide. The protein is predicted to be a type I membrane protein and shares highest

Target Details

sequence similarity with the other transmembrane CA isoform, CA XII, however, they have different patterns of tissue-specific expression and thus may play different physiologic roles.

Molecular Weight: 37668

Gene ID: 23632

NCBI Accession: [NP_036245](#)

UniProt: [Q9ULX7](#)

Application Details

Application Notes: WB: 1:1000. WB: 1:1000. FC: 1:10~50

Restrictions: For Research Use only

Handling

Format: Liquid

Buffer: Purified polyclonal antibody supplied in PBS with 0.09 % (W/V) sodium azide.

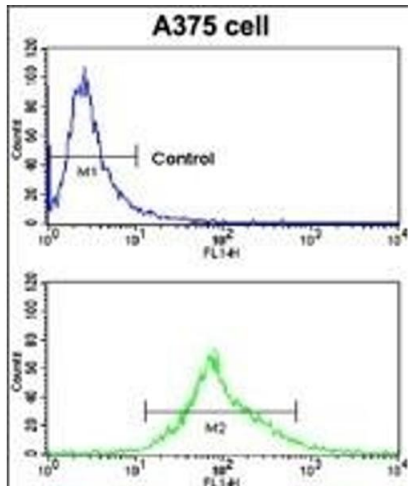
Preservative: Sodium azide

Precaution of Use: This product contains Sodium azide: a POISONOUS AND HAZARDOUS SUBSTANCE which should be handled by trained staff only.

Storage: 4 °C,-20 °C

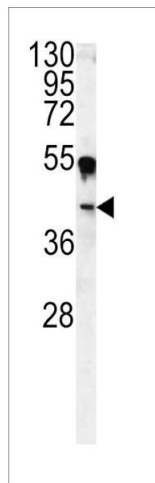
Storage Comment: Maintain refrigerated at 2-8 °C for up to 6 months. For long term storage store at -20 °C in small aliquots to prevent freeze-thaw cycles.

Expiry Date: 6 months



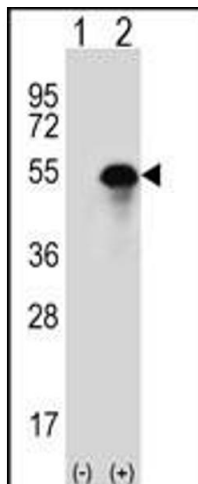
Flow Cytometry

Image 1. Flow cytometric analysis of cells using CA14 Antibody (N-term) (bottom histogram) compared to a negative control cell (top histogram). FITC-conjugated goat-anti-rabbit secondary antibodies were used for the analysis.



Western Blotting

Image 2. Western blot analysis of CA14 antibody (N-term) (ABIN391473 and ABIN2841441) in cell line lysates (35 μ g/lane). CA14 (arrow) was detected using the purified Pab.



Western Blotting

Image 3. Western blot analysis of CA14 (arrow) using rabbit polyclonal CA14 Antibody (N-term) (ABIN391473 and ABIN2841441). 293 cell lysates (2 μ g/lane) either nontransfected (Lane 1) or transiently transfected (Lane 2) with the CA14 gene.