

Datasheet for ABIN391479
anti-PLG antibody (C-Term)

3 Images

[Go to Product page](#)

Overview

Quantity:	400 µL
Target:	PLG
Binding Specificity:	AA 636-665, C-Term
Reactivity:	Human
Host:	Rabbit
Clonality:	Polyclonal
Conjugate:	This PLG antibody is un-conjugated
Application:	Western Blotting (WB), Immunohistochemistry (Paraffin-embedded Sections) (IHC (p)), Flow Cytometry (FACS)

Product Details

Immunogen:	This PLG antibody is generated from rabbits immunized with a KLH conjugated synthetic peptide between 636-665 amino acids from the C-terminal region of human PLG.
Clone:	RB18479
Isotype:	Ig Fraction
Purification:	This antibody is prepared by Saturated Ammonium Sulfate (SAS) precipitation followed by dialysis against PBS.

Target Details

Target:	PLG
Alternative Name:	PLG (PLG Products)

Target Details

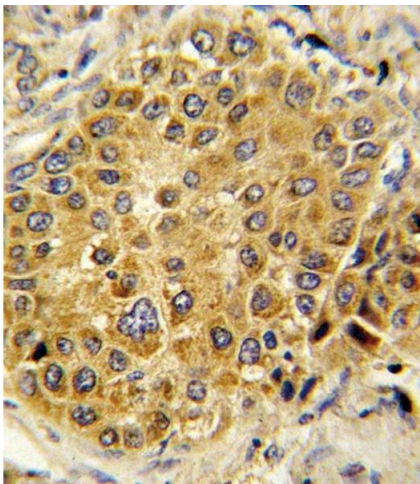
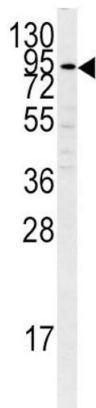
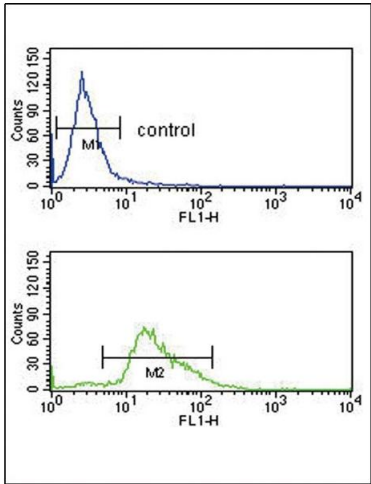
Background:	PLG is a circulating zymogen that is converted to the active enzyme plasmin by cleavage of the peptide bond between arg560 and val561, which is mediated by urokinase and tissue plasminogen activator. The main function of this protein is to dissolve fibrin clots. The protein, like trypsin, belongs to the family of serine proteinases.
Molecular Weight:	90569
Gene ID:	5340
NCBI Accession:	NP_000292
UniProt:	P00747
Pathways:	Complement System , Lipid Metabolism

Application Details

Application Notes:	WB: 1:1000. IHC-P: 1:10~50. FC: 1:10~50
Restrictions:	For Research Use only

Handling

Format:	Liquid
Buffer:	Purified polyclonal antibody supplied in PBS with 0.09 % (W/V) sodium azide.
Preservative:	Sodium azide
Precaution of Use:	This product contains Sodium azide: a POISONOUS AND HAZARDOUS SUBSTANCE which should be handled by trained staff only.
Storage:	4 °C,-20 °C
Storage Comment:	Maintain refrigerated at 2-8 °C for up to 6 months. For long term storage store at -20 °C in small aliquots to prevent freeze-thaw cycles.
Expiry Date:	6 months



Flow Cytometry

Image 1. PLG Antibody (C-term) (ABIN391479 and ABIN2841449) flow cytometry analysis of K562 cells (bottom histogram) compared to a negative control cell (top histogram). FITC-conjugated goat-anti-rabbit secondary antibodies were used for the analysis.

Western Blotting

Image 2. Western blot analysis of PLG antibody (C-term) (ABIN391479 and ABIN2841449) in K562 cell line lysates (35 µg/lane). PLG (arrow) was detected using the purified Pab.

Immunohistochemistry (Paraffin-embedded Sections)

Image 3. Formalin-fixed and paraffin-embedded human hepatocarcinoma reacted with PLG Antibody (C-term), which was peroxidase-conjugated to the secondary antibody, followed by DAB staining. This data demonstrates the use of this antibody for immunohistochemistry, clinical relevance has not been evaluated.