

Datasheet for ABIN391482
anti-PEDF antibody (N-Term)

4 Images

[Go to Product page](#)

Overview

Quantity:	400 µL
Target:	PEDF (SERPINF1)
Binding Specificity:	AA 9-36, N-Term
Reactivity:	Human
Host:	Rabbit
Clonality:	Polyclonal
Conjugate:	This PEDF antibody is un-conjugated
Application:	Western Blotting (WB), Immunohistochemistry (Paraffin-embedded Sections) (IHC (p)), Flow Cytometry (FACS)

Product Details

Immunogen:	This SERPINF1 antibody is generated from rabbits immunized with a KLH conjugated synthetic peptide between 9-36 amino acids from the N-terminal region of human SERPINF1.
Clone:	RB18492
Isotype:	Ig Fraction
Purification:	This antibody is prepared by Saturated Ammonium Sulfate (SAS) precipitation followed by dialysis against PBS.

Target Details

Target:	PEDF (SERPINF1)
Alternative Name:	SERPINF1 (SERPINF1 Products)

Target Details

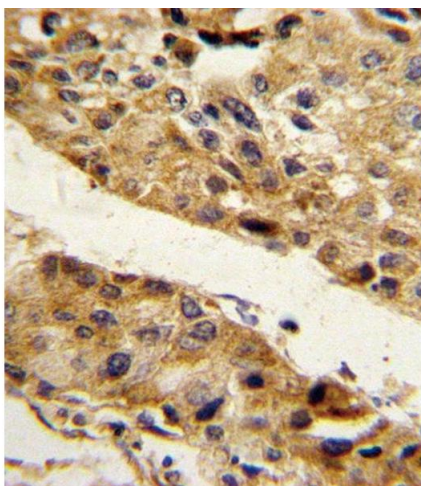
Background:	SERPINF1 is a member of the serpin family. Serpins are a group of serine protease inhibitors, some of which have also been reported to exhibit neurotrophic activity.
Molecular Weight:	46312
Gene ID:	5176
NCBI Accession:	NP_002606
UniProt:	P36955

Application Details

Application Notes:	WB: 1:1000. WB: 1:1000. IHC-P: 1:10~50. FC: 1:10~50
Restrictions:	For Research Use only

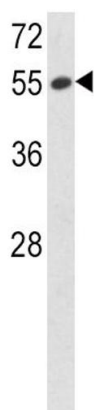
Handling

Format:	Liquid
Buffer:	Purified polyclonal antibody supplied in PBS with 0.09 % (W/V) sodium azide.
Preservative:	Sodium azide
Precaution of Use:	This product contains Sodium azide: a POISONOUS AND HAZARDOUS SUBSTANCE which should be handled by trained staff only.
Storage:	4 °C,-20 °C
Storage Comment:	Maintain refrigerated at 2-8 °C for up to 6 months. For long term storage store at -20 °C in small aliquots to prevent freeze-thaw cycles.
Expiry Date:	6 months



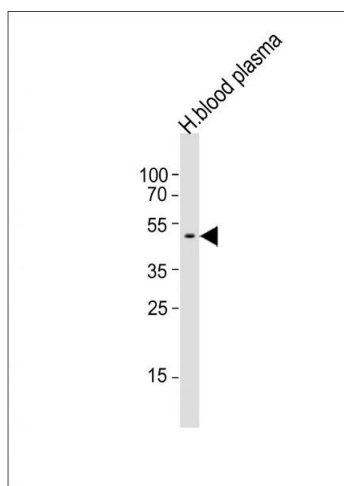
Immunohistochemistry (Paraffin-embedded Sections)

Image 1. Formalin-fixed and paraffin-embedded human hepatocarcinoma reacted with SERPINF1 Antibody (N-term), which was peroxidase-conjugated to the secondary antibody, followed by DAB staining. This data demonstrates the use of this antibody for immunohistochemistry, clinical relevance has not been evaluated.



Western Blotting

Image 2. Western blot analysis of SERPINF1 Antibody (N-term) (ABIN391482 and ABIN2841451) in 293 cell line lysates (35 µg/lane). SERPINF1 (arrow) was detected using the purified Pab.



Western Blotting

Image 3. Anti-SERPINF1 Antibody (N-term) at 1:1000 dilution + human blood plasma lysates Lysates/proteins at 20 µg per lane. Secondary Goat Anti-Rabbit IgG, (H+L), Peroxidase conjugated at 1/10000 dilution Predicted band size : 46 kDa Blocking/Dilution buffer: 5 % NFDM/TBST.

Please check the [product details page](#) for more images. Overall 4 images are available for ABIN391482.