

Datasheet for ABIN391483
anti-PEDF antibody (AA 279-306)

3 Images

[Go to Product page](#)

Overview

Quantity:	400 µL
Target:	PEDF (SERPINF1)
Binding Specificity:	AA 279-306
Reactivity:	Human
Host:	Rabbit
Clonality:	Polyclonal
Conjugate:	This PEDF antibody is un-conjugated
Application:	Western Blotting (WB), Immunohistochemistry (Paraffin-embedded Sections) (IHC (p)), Flow Cytometry (FACS)

Product Details

Immunogen:	This SERPINF1 antibody is generated from rabbits immunized with a KLH conjugated synthetic peptide between 279-306 amino acids from the Central region of human SERPINF1.
Clone:	RB18493
Isotype:	Ig Fraction
Predicted Reactivity:	B, M
Purification:	This antibody is prepared by Saturated Ammonium Sulfate (SAS) precipitation followed by dialysis against PBS.

Target Details

Target:	PEDF (SERPINF1)
---------	-----------------

Target Details

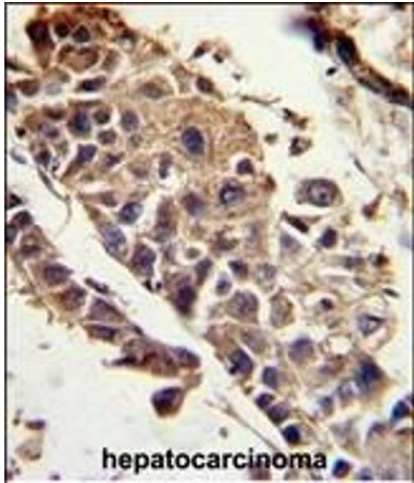
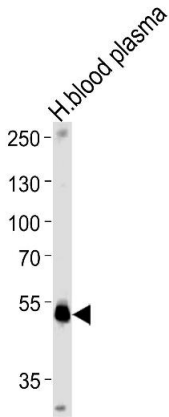
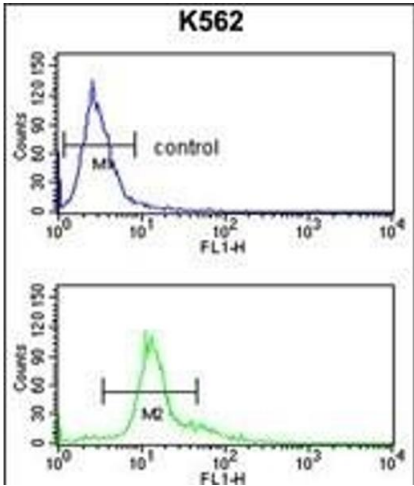
Alternative Name:	SERPINF1 (SERPINF1 Products)
Background:	SERPINF1 is a member of the serpin family. Serpins are a group of serine protease inhibitors, some of which have also been reported to exhibit neurotrophic activity.
Molecular Weight:	46312
Gene ID:	5176
NCBI Accession:	NP_002606
UniProt:	P36955

Application Details

Application Notes:	WB: 1:1000. IHC-P: 1:50~100. FC: 1:10~50
Restrictions:	For Research Use only

Handling

Format:	Liquid
Buffer:	Purified polyclonal antibody supplied in PBS with 0.09 % (W/V) sodium azide.
Preservative:	Sodium azide
Precaution of Use:	This product contains Sodium azide: a POISONOUS AND HAZARDOUS SUBSTANCE which should be handled by trained staff only.
Storage:	4 °C,-20 °C
Storage Comment:	Maintain refrigerated at 2-8 °C for up to 6 months. For long term storage store at -20 °C in small aliquots to prevent freeze-thaw cycles.
Expiry Date:	6 months



Flow Cytometry

Image 1. SERPINF1 Antibody (Center) (ABIN391483 and ABIN2841452) flow cytometry analysis of K562 cells (bottom histogram) compared to a negative control cell (top histogram). FITC-conjugated goat-anti-rabbit secondary antibodies were used for the analysis.

Western Blotting

Image 2. SERPINF1 Antibody (Center) (ABIN391483 and ABIN2841452) western blot analysis in human blood plasma tissue lysates (35 µg/lane). This demonstrates the SERPINF1 antibody detected the SERPINF1 protein (arrow).

Immunohistochemistry (Paraffin-embedded Sections)

Image 3. Formalin-fixed and paraffin-embedded human hepatocarcinoma reacted with SERPINF1 Antibody (Center), which was peroxidase-conjugated to the secondary antibody, followed by DAB staining. This data demonstrates the use of this antibody for immunohistochemistry, clinical relevance has not been evaluated.