

Datasheet for ABIN391489
anti-MSRA antibody (N-Term)[Go to Product page](#)

5 Images

Overview

Quantity:	400 µL
Target:	MSRA
Binding Specificity:	AA 34-63, N-Term
Reactivity:	Human, Mouse
Host:	Rabbit
Clonality:	Polyclonal
Conjugate:	This MSRA antibody is un-conjugated
Application:	Western Blotting (WB), Immunofluorescence (IF), Immunohistochemistry (Paraffin-embedded Sections) (IHC (p)), Flow Cytometry (FACS)

Product Details

Immunogen:	This MSRA antibody is generated from rabbits immunized with a KLH conjugated synthetic peptide between 34-63 amino acids from the N-terminal region of human MSRA.
Clone:	RB18651
Isotype:	Ig Fraction
Predicted Reactivity:	B
Purification:	This antibody is prepared by Saturated Ammonium Sulfate (SAS) precipitation followed by dialysis against PBS.

Target Details

Target:	MSRA
---------	------

Target Details

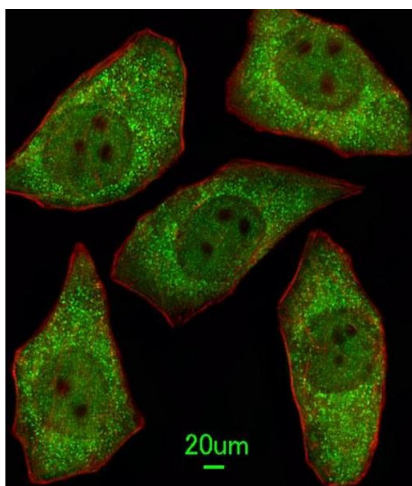
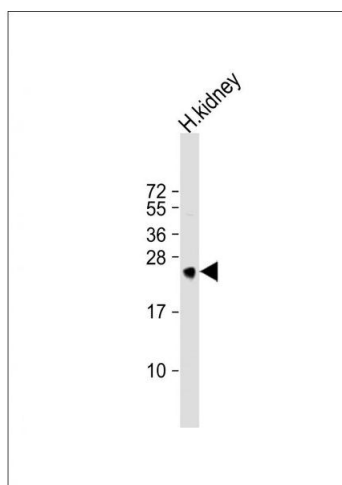
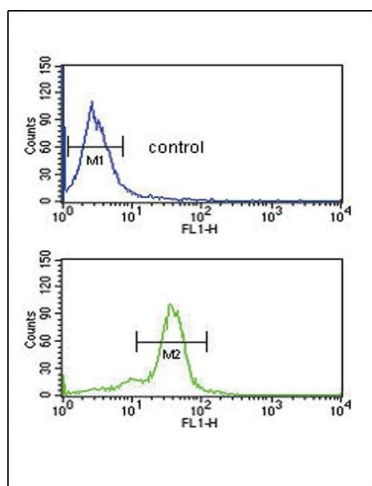
Alternative Name:	MSRA (MSRA Products)
Background:	MSRA is ubiquitous and highly conserved. This protein carries out the enzymatic reduction of methionine sulfoxide to methionine. Human and animal studies have shown the highest levels of expression in kidney and nervous tissue. The protein's proposed function is the repair of oxidative damage to proteins to restore biological activity.
Molecular Weight:	26132
Gene ID:	4482
NCBI Accession:	NP_001129142 , NP_001129143 , NP_001186658 , NP_036463
UniProt:	Q9UJ68

Application Details

Application Notes:	IF: 1:100. WB: 1:1000. WB: 1:1000. IHC-P: 1:10~50. FC: 1:10~50
Restrictions:	For Research Use only

Handling

Format:	Liquid
Buffer:	Purified polyclonal antibody supplied in PBS with 0.09 % (W/V) sodium azide.
Preservative:	Sodium azide
Precaution of Use:	This product contains Sodium azide: a POISONOUS AND HAZARDOUS SUBSTANCE which should be handled by trained staff only.
Storage:	4 °C,-20 °C
Storage Comment:	Maintain refrigerated at 2-8 °C for up to 6 months. For long term storage store at -20 °C in small aliquots to prevent freeze-thaw cycles.
Expiry Date:	6 months



Flow Cytometry

Image 1. MSRA Antibody (N-term) (ABIN391489 and ABIN2841456) flow cytometric analysis of MDA-MB cells (bottom histogram) compared to a negative control cell (top histogram). FITC-conjugated goat-anti-rabbit secondary antibodies were used for the analysis.

Western Blotting

Image 2. Anti-MSRA Antibody (N-term) at 1:1000 dilution + human kidney lysate. Lysates/proteins at 20 μg per lane. Secondary Goat Anti-Rabbit IgG, (H+L), Peroxidase conjugated at 1/10000 dilution. Predicted band size : 26 kDa. Blocking/Dilution buffer: 5 % NFDM/TBST.

Immunofluorescence

Image 3. Immunofluorescent analysis of A549 cells, using MSRA Antibody (N-term) (ABIN391489 and ABIN2841456). (ABIN391489 and ABIN2841456) was diluted at 1:100 dilution. Alexa Fluor 488-conjugated goat anti-rabbit IgG at 1:400 dilution was used as the secondary antibody (green). Cytoplasmic actin was counterstained with Dylight Fluor® 554 (red) conjugated Phalloidin (red).

Please check the [product details page](#) for more images. Overall 5 images are available for ABIN391489.