

Datasheet for ABIN391491
anti-BTBD1 antibody (AA 295-322)[Go to Product page](#)

3 Images

Overview

Quantity:	400 µL
Target:	BTBD1
Binding Specificity:	AA 295-322
Reactivity:	Human, Mouse
Host:	Rabbit
Clonality:	Polyclonal
Conjugate:	This BTBD1 antibody is un-conjugated
Application:	Western Blotting (WB), Flow Cytometry (FACS)

Product Details

Immunogen:	This BTBD1 antibody is generated from rabbits immunized with a KLH conjugated synthetic peptide between 295-322 amino acids from the Central region of human BTBD1.
Clone:	RB18689
Isotype:	Ig Fraction
Purification:	This antibody is prepared by Saturated Ammonium Sulfate (SAS) precipitation followed by dialysis against PBS.

Target Details

Target:	BTBD1
Alternative Name:	BTBD1 (BTBD1 Products)

Target Details

Background: BTBD1 binds topoisomerase I. The N-terminus contains a proline-rich region and a BTB/POZ domain (broad-complex, Tramtrack and bric a brac/Pox virus and Zinc finger), both of which are typically involved in protein-protein interactions. Subcellularly, the protein localizes to cytoplasmic bodies.

Gene ID: 53339

NCBI Accession: [NP_001011885](#), [NP_079514](#)

UniProt: [Q9H0C5](#)

Application Details

Application Notes: WB: 1:1000. WB: 1:1000. FC: 1:10~50

Restrictions: For Research Use only

Handling

Format: Liquid

Buffer: Purified polyclonal antibody supplied in PBS with 0.09 % (W/V) sodium azide.

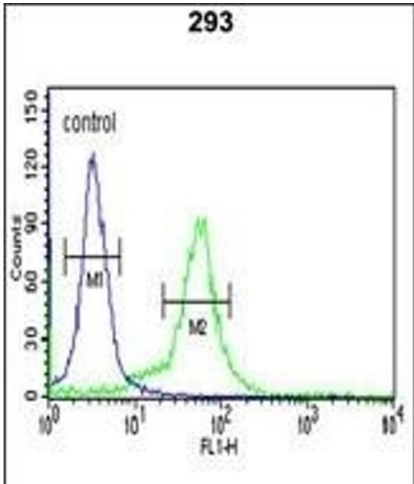
Preservative: Sodium azide

Precaution of Use: This product contains Sodium azide: a POISONOUS AND HAZARDOUS SUBSTANCE which should be handled by trained staff only.

Storage: 4 °C, -20 °C

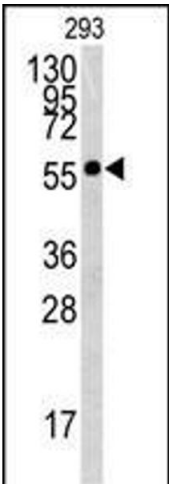
Storage Comment: Maintain refrigerated at 2-8 °C for up to 6 months. For long term storage store at -20 °C in small aliquots to prevent freeze-thaw cycles.

Expiry Date: 6 months



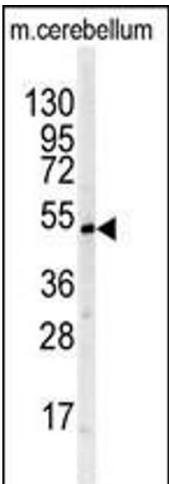
Flow Cytometry

Image 1. BTBD1 Antibody (Center) (ABIN391491 and ABIN2841458) flow cytometric analysis of 293 cells (right histogram) compared to a negative control cell (left histogram).FITC-conjugated goat-anti-rabbit secondary antibodies were used for the analysis.



Western Blotting

Image 2. Western blot analysis of BTBD1 antibody (Center) (ABIN391491 and ABIN2841458) in 293 cell line lysates (35 µg/lane). BTBD1 (arrow) was detected using the purified Pab.



Western Blotting

Image 3. Western blot analysis of BTBD1 antibody (Center) (ABIN391491 and ABIN2841458) in mouse cerebellum tissue lysates (35 µg/lane). BTBD1 (arrow) was detected using the purified Pab.