



[Go to Product page](#)

Datasheet for ABIN391498
anti-LYAR antibody (N-Term)

2 Images

Overview

Quantity:	400 µL
Target:	LYAR
Binding Specificity:	AA 38-66, N-Term
Reactivity:	Human
Host:	Rabbit
Clonality:	Polyclonal
Conjugate:	This LYAR antibody is un-conjugated
Application:	Western Blotting (WB), Immunohistochemistry (Paraffin-embedded Sections) (IHC (p))

Product Details

Immunogen:	This LYAR antibody is generated from rabbits immunized with a KLH conjugated synthetic peptide between 38-66 amino acids from the N-terminal region of human LYAR.
Clone:	RB18752
Isotype:	Ig Fraction
Purification:	This antibody is prepared by Saturated Ammonium Sulfate (SAS) precipitation followed by dialysis against PBS.

Target Details

Target:	LYAR
Alternative Name:	LYAR (LYAR Products)

Target Details

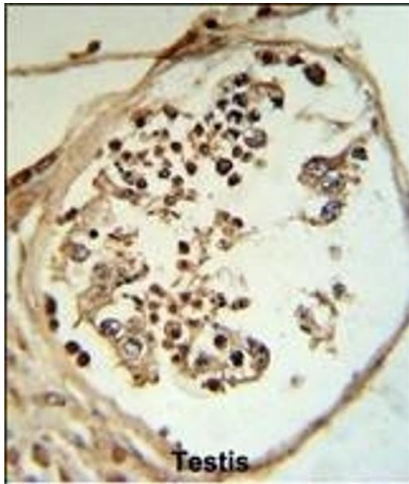
Target Type:	Antibody
Molecular Weight:	43615
Gene ID:	55646
NCBI Accession:	NP_001139197, NP_060286
UniProt:	Q9NX58

Application Details

Application Notes:	WB: 1:1000. IHC-P: 1:50~100
Restrictions:	For Research Use only

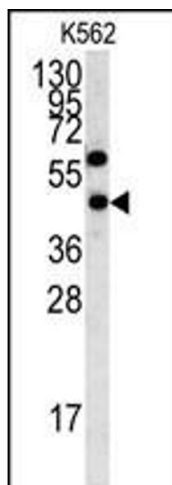
Handling

Format:	Liquid
Buffer:	Purified polyclonal antibody supplied in PBS with 0.09 % (W/V) sodium azide.
Preservative:	Sodium azide
Precaution of Use:	This product contains Sodium azide: a POISONOUS AND HAZARDOUS SUBSTANCE which should be handled by trained staff only.
Storage:	4 °C,-20 °C
Storage Comment:	Maintain refrigerated at 2-8 °C for up to 6 months. For long term storage store at -20 °C in small aliquots to prevent freeze-thaw cycles.
Expiry Date:	6 months



Immunohistochemistry (Paraffin-embedded Sections)

Image 1. LYAR Antibody (N-term) (R) IHC analysis in formalin fixed and paraffin embedded human testis tissue followed by peroxidase conjugation of the secondary antibody and DAB staining. This data demonstrates the use of the LYAR Antibody (N-term) for immunohistochemistry. Clinical relevance has not been evaluated.



Western Blotting

Image 2. Western blot analysis of LYAR antibody (N-term) (ABIN391498 and ABIN2841463) in K562 cell line lysates (35 µg/lane). LYAR (arrow) was detected using the purified Pab.