

Datasheet for ABIN391506
anti-PITX1 antibody (AA 123-150)

4 Images

[Go to Product page](#)

Overview

Quantity:	400 µL
Target:	PITX1
Binding Specificity:	AA 123-150
Reactivity:	Human
Host:	Rabbit
Clonality:	Polyclonal
Application:	Western Blotting (WB), Immunohistochemistry (Paraffin-embedded Sections) (IHC (p)), Flow Cytometry (FACS)

Product Details

Immunogen:	This PITX1 antibody is generated from rabbits immunized with a KLH conjugated synthetic peptide between 123-150 amino acids from the Central region of human PITX1.
Clone:	RB18913
Isotype:	Ig Fraction
Predicted Reactivity:	C, M, Rat, X, Zf, D, E
Purification:	This antibody is prepared by Saturated Ammonium Sulfate (SAS) precipitation followed by dialysis against PBS.

Target Details

Target:	PITX1
Alternative Name:	PITX1 (PITX1 Products)

Target Details

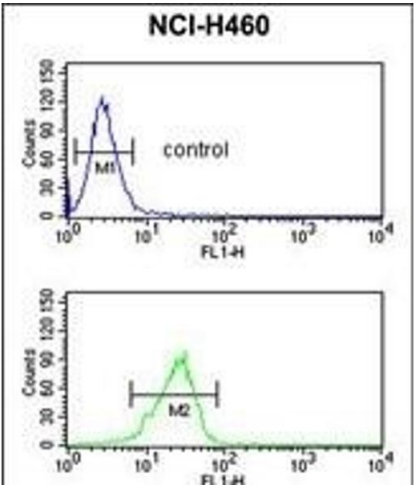
Background:	PITX1 is a member of the RIEG/PITX homeobox family, which is in the bicoid class of homeodomain proteins. Members of this family are involved in organ development and left-right asymmetry. This protein acts as a transcriptional regulator involved in basal and hormone-regulated activity of prolactin.
Molecular Weight:	34128
Gene ID:	5307
NCBI Accession:	NP_002644
UniProt:	P78337

Application Details

Application Notes:	WB: 1:1000. WB: 1:1000. IHC-P: 1:50~100. FC: 1:10~50
Restrictions:	For Research Use only

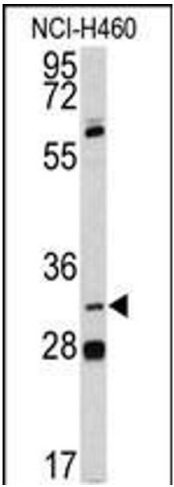
Handling

Format:	Liquid
Buffer:	Purified polyclonal antibody supplied in PBS with 0.09 % (W/V) sodium azide.
Preservative:	Sodium azide
Precaution of Use:	This product contains Sodium azide: a POISONOUS AND HAZARDOUS SUBSTANCE which should be handled by trained staff only.
Storage:	4 °C,-20 °C
Storage Comment:	Maintain refrigerated at 2-8 °C for up to 6 months. For long term storage store at -20 °C in small aliquots to prevent freeze-thaw cycles.
Expiry Date:	6 months



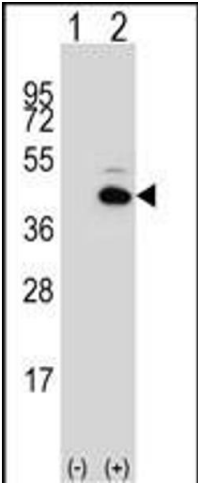
Flow Cytometry

Image 1. PITX1 Antibody (Center) (ABIN391506 and ABIN2841469) flow cytometric analysis of NCI- cells (bottom histogram) compared to a negative control cell (top histogram).FITC-conjugated goat-anti-rabbit secondary antibodies were used for the analysis.



Western Blotting

Image 2. Western blot analysis of PITX1 antibody (Center) (ABIN391506 and ABIN2841469) in NCI- cell line lysates (35 µg/lane). PITX1 (arrow) was detected using the purified Pab.



Western Blotting

Image 3. Western blot analysis of PITX1 (arrow) using rabbit polyclonal PITX1 Antibody (Center) (ABIN391506 and ABIN2841469). 293 cell lysates (2 µg/lane) either nontransfected (Lane 1) or transiently transfected (Lane 2) with the PITX1 gene.

Please check the [product details page](#) for more images. Overall 4 images are available for ABIN391506.