

Datasheet for ABIN391515
anti-KLF5 antibody (C-Term)

4 Images

1 Publication

[Go to Product page](#)

Overview

| | |
|----------------------|------------------------------------------------------------------------------------------------------------------------------------|
| Quantity: | 400 µL |
| Target: | KLF5 |
| Binding Specificity: | AA 341-370, C-Term |
| Reactivity: | Human |
| Host: | Rabbit |
| Clonality: | Polyclonal |
| Conjugate: | This KLF5 antibody is un-conjugated |
| Application: | Western Blotting (WB), Immunofluorescence (IF), Immunohistochemistry (Paraffin-embedded Sections) (IHC (p)), Flow Cytometry (FACS) |

Product Details

| | |
|-----------------------|----------------------------------------------------------------------------------------------------------------------------------------------------------------------|
| Immunogen: | This KLF5 antibody is generated from rabbits immunized with a KLH conjugated synthetic peptide between 341-370 amino acids from the C-terminal region of human KLF5. |
| Clone: | RB19124 |
| Isotype: | Ig Fraction |
| Predicted Reactivity: | M |
| Purification: | This antibody is prepared by Saturated Ammonium Sulfate (SAS) precipitation followed by dialysis against PBS. |

Target Details

| | |
|---------|------|
| Target: | KLF5 |
|---------|------|

Target Details

| | |
|-------------------|----------------------------------------------------------------------------------------------------------------------------------------------------------------------------------------------------------------------------------------|
| Alternative Name: | KLF5 (KLF5 Products) |
| Background: | KLF5 is a member of the Kruppel-like factor subfamily of zinc finger proteins. Since the protein localizes to the nucleus and binds the epidermal growth factor response element, the protein is thought to be a transcription factor. |
| Molecular Weight: | 50792 |
| Gene ID: | 688 |
| NCBI Accession: | NP_001721 |
| UniProt: | Q13887 |

Application Details

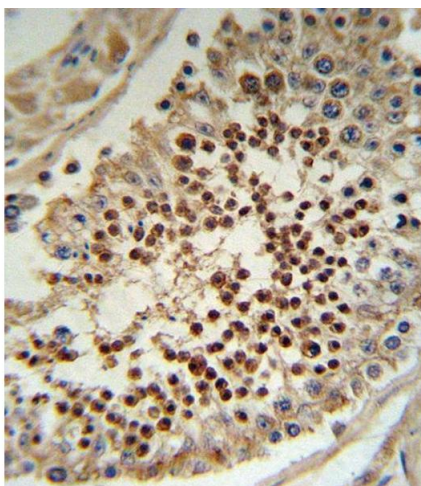
| | |
|--------------------|------------------------------------------------------|
| Application Notes: | IF: 1:10~50. WB: 1:1000. IHC-P: 1:10~50. FC: 1:10~50 |
| Restrictions: | For Research Use only |

Handling

| | |
|--------------------|--------------------------------------------------------------------------------------------------------------------------------------------|
| Format: | Liquid |
| Buffer: | Purified polyclonal antibody supplied in PBS with 0.09 % (W/V) sodium azide. |
| Preservative: | Sodium azide |
| Precaution of Use: | This product contains Sodium azide: a POISONOUS AND HAZARDOUS SUBSTANCE which should be handled by trained staff only. |
| Storage: | 4 °C,-20 °C |
| Storage Comment: | Maintain refrigerated at 2-8 °C for up to 6 months. For long term storage store at -20 °C in small aliquots to prevent freeze-thaw cycles. |
| Expiry Date: | 6 months |

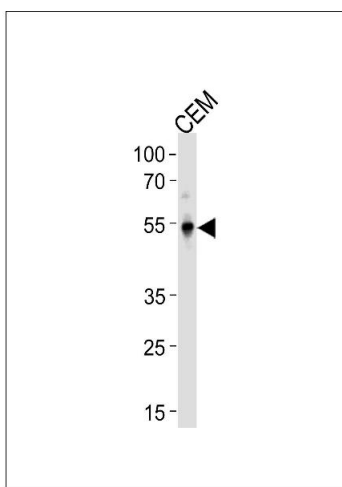
Publications

| | |
|-------------------|------------------------------------------------------------------------------------------------------------------------------------------------------------------------------------------------------------------------------------------------------------------------------------------------------------------------------------------------------------------------------------------------|
| Product cited in: | Ewing, Chu, Elisma, Li, Taylor, Climie, McBroom-Cerajewski, Robinson, OConnor, Li, Taylor, Dharsee, Ho, Heilbut, Moore, Zhang, Ornatsky, Bukhman, Ethier, Sheng, Vasilescu, Abu-Farha, Lambert, Duewel et al.: "Large-scale mapping of human protein-protein interactions by mass spectrometry. ..." in: Molecular systems biology , Vol. 3, pp. 89, (2007) (PubMed). |
|-------------------|------------------------------------------------------------------------------------------------------------------------------------------------------------------------------------------------------------------------------------------------------------------------------------------------------------------------------------------------------------------------------------------------|



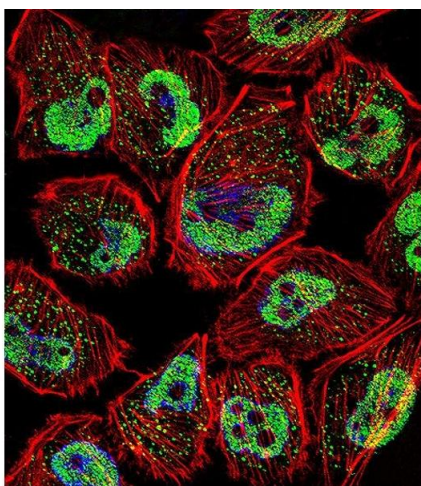
Immunohistochemistry (Paraffin-embedded Sections)

Image 1. KLF5 Antibody (C-term) (ABIN391515 and ABIN2841476) IHC analysis in formalin fixed and paraffin embedded human testis tissue followed by peroxidase conjugation of the secondary antibody and DAB staining. This data demonstrates the use of the KLF5 Antibody (C-term) for immunohistochemistry. Clinical relevance has not been evaluated.



Western Blotting

Image 2. KLF5 Antibody (C-term) (ABIN391515 and ABIN2841476) western blot analysis in CEM cell line lysates (35 µg/lane). This demonstrates the KLF5 antibody detected the KLF5 protein (arrow).



Immunofluorescence

Image 3. Fluorescent confocal image of cell stained with KLF5 Antibody (C-term) (ABIN391515 and ABIN2841476). cells were fixed with 4 % PFA (20 min), permeabilized with Triton X-100 (0.1 %, 10 min), then incubated with KLF5 primary antibody (1:25, 1 h at 37 °C). For secondary antibody, Alexa Fluor® 488 conjugated donkey anti-rabbit antibody (green) was used (1:400, 50 min at 37 °C). Cytoplasmic actin was counterstained with Alexa Fluor® 555 (red) conjugated Phalloidin (7 units/mL, 1 h at 37 °C). Nuclei were counterstained with DAPI (blue) (10 µg/mL, 10 min). KLF5 immunoreactivity is localized to vesicles and Nucleus significantly.

Please check the [product details page](#) for more images. Overall 4 images are available for ABIN391515.