

Datasheet for ABIN391516
anti-KLF5 antibody (AA 127-156)[Go to Product page](#)

1 Image

Overview

Quantity:	400 µL
Target:	KLF5
Binding Specificity:	AA 127-156
Reactivity:	Human
Host:	Rabbit
Clonality:	Polyclonal
Conjugate:	This KLF5 antibody is un-conjugated
Application:	Western Blotting (WB)

Product Details

Immunogen:	This KLF5 antibody is generated from rabbits immunized with a KLH conjugated synthetic peptide between 127-156 amino acids from the Central region of human KLF5.
Clone:	RB19123
Isotype:	Ig Fraction
Predicted Reactivity:	M
Purification:	This antibody is prepared by Saturated Ammonium Sulfate (SAS) precipitation followed by dialysis against PBS.

Target Details

Target:	KLF5
---------	------

Target Details

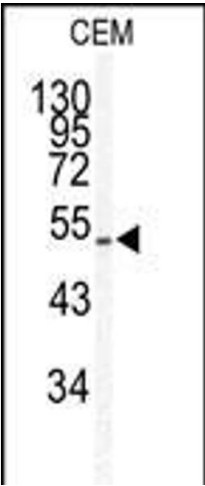
Alternative Name:	KLF5 (KLF5 Products)
Background:	KLF5 is a member of the Kruppel-like factor subfamily of zinc finger proteins. Since the protein localizes to the nucleus and binds the epidermal growth factor response element, the protein is thought to be a transcription factor.
Molecular Weight:	50792
Gene ID:	688
NCBI Accession:	NP_001721
UniProt:	Q13887

Application Details

Application Notes:	WB: 1:1000
Restrictions:	For Research Use only

Handling

Format:	Liquid
Buffer:	Purified polyclonal antibody supplied in PBS with 0.09 % (W/V) sodium azide.
Preservative:	Sodium azide
Precaution of Use:	This product contains Sodium azide: a POISONOUS AND HAZARDOUS SUBSTANCE which should be handled by trained staff only.
Storage:	4 °C,-20 °C
Storage Comment:	Maintain refrigerated at 2-8 °C for up to 6 months. For long term storage store at -20 °C in small aliquots to prevent freeze-thaw cycles.
Expiry Date:	6 months



Western Blotting

Image 1. Western blot analysis of KLF5 antibody (Center) (ABIN391516 and ABIN2841477) in CEM cell line lysates (35 µg/lane). KLF5 (arrow) was detected using the purified Pab.