

Datasheet for ABIN391522
anti-S100A6 antibody (C-Term)[Go to Product page](#)

3 Images

Overview

Quantity:	400 µL
Target:	S100A6
Binding Specificity:	AA 37-67, C-Term
Reactivity:	Human, Mouse
Host:	Rabbit
Clonality:	Polyclonal
Conjugate:	This S100A6 antibody is un-conjugated
Application:	Western Blotting (WB), Flow Cytometry (FACS)

Product Details

Immunogen:	This S100A6 antibody is generated from rabbits immunized with a KLH conjugated synthetic peptide between 37-67 amino acids from the C-terminal region of human S100A6.
Clone:	RB19141
Isotype:	Ig Fraction
Purification:	This antibody is prepared by Saturated Ammonium Sulfate (SAS) precipitation followed by dialysis against PBS.

Target Details

Target:	S100A6
Alternative Name:	S100A6 (S100A6 Products)

Target Details

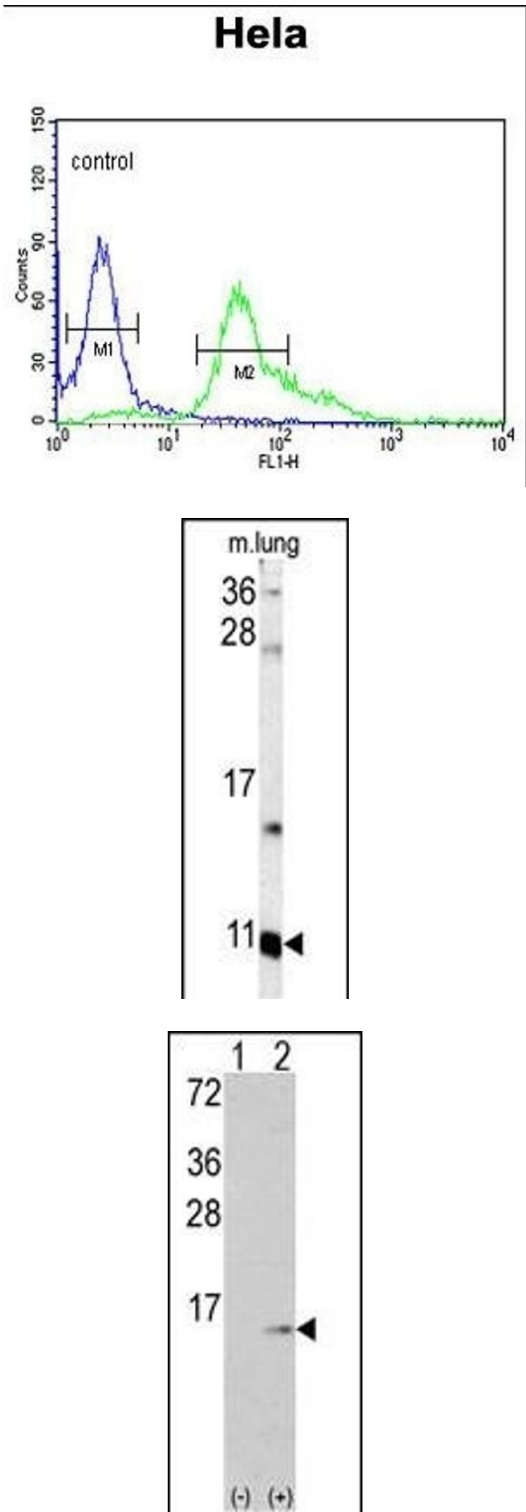
Background:	S100A6 is a member of the S100 family of proteins containing 2 EF-hand calcium-binding motifs. S100 proteins are localized in the cytoplasm and/or nucleus of a wide range of cells, and involved in the regulation of a number of cellular processes such as cell cycle progression and differentiation. This protein may function in stimulation of Ca ²⁺ -dependent insulin release, stimulation of prolactin secretion, and exocytosis.
Molecular Weight:	10180
Gene ID:	6277
NCBI Accession:	NP_055439
UniProt:	P06703
Pathways:	S100 Proteins

Application Details

Application Notes:	WB: 1:1000. WB: 1:1000. FC: 1:10~50
Restrictions:	For Research Use only

Handling

Format:	Liquid
Buffer:	Purified polyclonal antibody supplied in PBS with 0.09 % (W/V) sodium azide.
Preservative:	Sodium azide
Precaution of Use:	This product contains Sodium azide: a POISONOUS AND HAZARDOUS SUBSTANCE which should be handled by trained staff only.
Storage:	4 °C, -20 °C
Storage Comment:	Maintain refrigerated at 2-8 °C for up to 6 months. For long term storage store at -20 °C in small aliquots to prevent freeze-thaw cycles.
Expiry Date:	6 months



Flow Cytometry

Image 1. S100A6 Antibody (C-term) (ABIN391522 and ABIN2841482) flow cytometric analysis of Hela cells (right histogram) compared to a negative control cell (left histogram). FITC-conjugated goat-anti-rabbit secondary antibodies were used for the analysis.

Western Blotting

Image 2. Western blot analysis of S100A6 antibody (C-term) (ABIN391522 and ABIN2841482) in mouse lung tissue lysates (35 µg/lane). S100A6 (arrow) was detected using the purified Pab.

Western Blotting

Image 3. Western blot analysis of S100A6 (arrow) using rabbit polyclonal S100A6 Antibody (C-term) (ABIN391522 and ABIN2841482). 293 cell lysates (2 µg/lane) either nontransfected (Lane 1) or transiently transfected with the S100A6 gene (Lane 2) (Origene Technologies).