

Datasheet for ABIN391524  
**anti-CPN2 antibody (N-Term)**[Go to Product page](#)

## 3 Images

## Overview

Quantity:	400 µL
Target:	CPN2
Binding Specificity:	AA 74-103, N-Term
Reactivity:	Human
Host:	Rabbit
Clonality:	Polyclonal
Conjugate:	This CPN2 antibody is un-conjugated
Application:	Western Blotting (WB), Immunohistochemistry (Paraffin-embedded Sections) (IHC (p)), Flow Cytometry (FACS)

## Product Details

Immunogen:	This CPN2 antibody is generated from rabbits immunized with a KLH conjugated synthetic peptide between 74-103 amino acids from the N-terminal region of human CPN2.
Clone:	RB18703
Isotype:	Ig Fraction
Purification:	This antibody is prepared by Saturated Ammonium Sulfate (SAS) precipitation followed by dialysis against PBS.

## Target Details

Target:	CPN2
Alternative Name:	CPN2 ( <a href="#">CPN2 Products</a> )

## Target Details

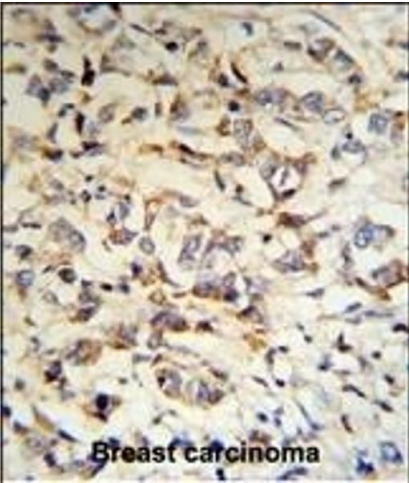
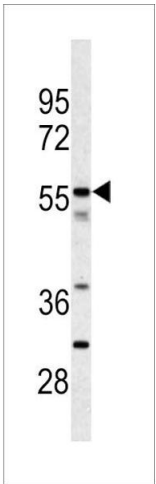
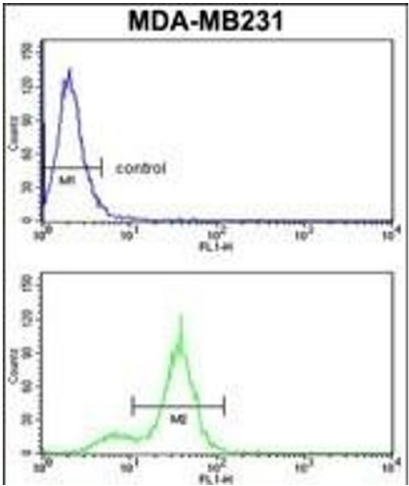
Background:	CPN2, the 83 kDa subunit binds and stabilizes the catalytic subunit at 37 degrees Celsius and keeps it in circulation. Under some circumstances it may be an allosteric modifier of the catalytic subunit.
Molecular Weight:	60557
Gene ID:	1370
NCBI Accession:	<a href="#">NP_001073982</a>
UniProt:	<a href="#">P22792</a>

## Application Details

Application Notes:	WB: 1:1000. IHC-P: 1:50~100. FC: 1:10~50
Restrictions:	For Research Use only

## Handling

Format:	Liquid
Buffer:	Purified polyclonal antibody supplied in PBS with 0.09 % (W/V) sodium azide.
Preservative:	Sodium azide
Precaution of Use:	This product contains Sodium azide: a POISONOUS AND HAZARDOUS SUBSTANCE which should be handled by trained staff only.
Storage:	4 °C, -20 °C
Storage Comment:	Maintain refrigerated at 2-8 °C for up to 6 months. For long term storage store at -20 °C in small aliquots to prevent freeze-thaw cycles.
Expiry Date:	6 months



### Flow Cytometry

**Image 1.** CPN2 Antibody (N-term) (ABIN391524 and ABIN2841483) flow cytometry analysis of MDA-M cells (bottom histogram) compared to a negative control cell (top histogram). FITC-conjugated goat-anti-rabbit secondary antibodies were used for the analysis.

### Western Blotting

**Image 2.** Western blot analysis of CPN2 antibody (N-term) (ABIN391524 and ABIN2841483) in jurkat cell line lysates (35 µg/lane). CPN2 (arrow) was detected using the purified Pab.

### Immunohistochemistry (Paraffin-embedded Sections)

**Image 3.** CPN2 Antibody (N-term) (R) IHC analysis in formalin fixed and paraffin embedded human breast carcinoma tissue followed by peroxidase conjugation of the secondary antibody and DAB staining. This data demonstrates the use of the CPN2 Antibody (N-term) for immunohistochemistry. Clinical relevance has not been evaluated.