

Datasheet for ABIN391536

anti-Complement Factor B antibody (Center)[Go to Product page](#)**2** Images

Overview

Quantity:	400 µL
Target:	Complement Factor B (CFB)
Binding Specificity:	AA 395-422, Center
Reactivity:	Human
Host:	Rabbit
Clonality:	Polyclonal
Conjugate:	This Complement Factor B antibody is un-conjugated
Application:	Western Blotting (WB), Immunohistochemistry (Paraffin-embedded Sections) (IHC (p))

Product Details

Immunogen:	This BF antibody is generated from rabbits immunized with a KLH conjugated synthetic peptide between 395-422 AA from the Central region of human BF.
Clone:	RB18685
Isotype:	Ig Fraction
Specificity:	This BF antibody is generated from rabbits immunized with a KLH conjugated synthetic peptide between 401~431 amino acids from the Center region of human BF.
Purification:	This antibody is prepared by Saturated Ammonium Sulfate (SAS) precipitation followed by dialysis against PBS.

Target Details

Target:	Complement Factor B (CFB)
---------	---------------------------

Target Details

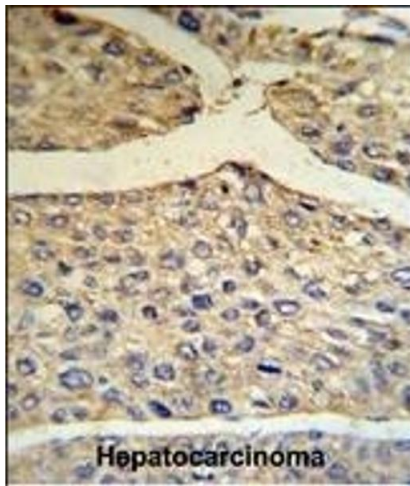
Alternative Name:	Complement Factor B (CFB Products)
Background:	<p>BF is complement factor B, a component of the alternative pathway of complement activation. Factor B circulates in the blood as a single chain polypeptide. Upon activation of the alternative pathway, it is cleaved by complement factor D yielding the noncatalytic chain Ba and the catalytic subunit Bb. The active subunit Bb is a serine protease which associates with C3b to form the alternative pathway C3 convertase. Bb is involved in the proliferation of preactivated B lymphocytes, while Ba inhibits their proliferation.</p> <p>Synonyms: Complement factor B, C3/C5 convertase, Properdin factor B, Glycine-rich beta glycoprotein, GBG, PBF2, Complement factor B Ba fragment, Complement factor B Bb fragment, BFD, BF, CFB</p>
Molecular Weight:	85533 DA
Gene ID:	629
UniProt:	P00751
Pathways:	Complement System , Proton Transport , Ribonucleoside Biosynthetic Process

Application Details

Application Notes:	WB = 1:1000, IHC (p) = 1:50-100
Restrictions:	For Research Use only

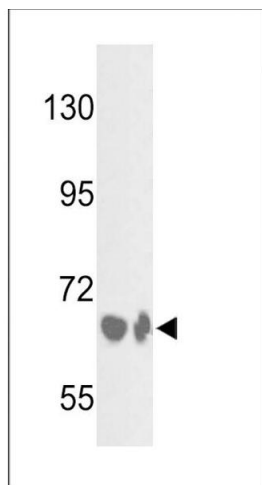
Handling

Format:	Liquid
Concentration:	2 mg/mL
Buffer:	PBS with 0.09 % (W/V) sodium azide
Preservative:	Sodium azide
Precaution of Use:	This product contains sodium azide: a POISONOUS AND HAZARDOUS SUBSTANCE which should be handled by trained staff only.
Storage:	4 °C/-20 °C
Storage Comment:	Maintain refrigerated at 2-8 °C for up to 6 months. For long term storage store at -20 °C in small aliquots to prevent freeze-thaw cycles.
Expiry Date:	6 months



Immunohistochemistry (Paraffin-embedded Sections)

Image 1. BF Antibody (Center) (R) IHC analysis in formalin fixed and paraffin embedded human hepatocarcinoma tissue followed by peroxidase conjugation of the secondary antibody and DAB staining. This data demonstrates the use of the BF Antibody (Center) for immunohistochemistry. Clinical relevance has not been evaluated.



Western Blotting

Image 2. Western blot analysis of BF Antibody (Center) (ABIN391536 and ABIN2841487) in HepG2 cell line and mouse liver tissue lysates (35 µg/lane). BF (arrow) was detected using the purified Pab.