



[Go to Product page](#)

Datasheet for ABIN391540
anti-APOL1 antibody (AA 137-171)

3 Images

Overview

Quantity:	400 µL
Target:	APOL1
Binding Specificity:	AA 137-171
Reactivity:	Human
Host:	Rabbit
Clonality:	Polyclonal
Conjugate:	This APOL1 antibody is un-conjugated
Application:	Western Blotting (WB), Immunohistochemistry (Paraffin-embedded Sections) (IHC (p)), Flow Cytometry (FACS)

Product Details

Immunogen:	This APOL1 antibody is generated from rabbits immunized with a KLH conjugated synthetic peptide between 137-171 amino acids from human APOL1.
Clone:	RB19169
Isotype:	Ig Fraction
Purification:	This antibody is prepared by Saturated Ammonium Sulfate (SAS) precipitation followed by dialysis against PBS.

Target Details

Target:	APOL1
Alternative Name:	APOL1 (APOL1 Products)

Target Details

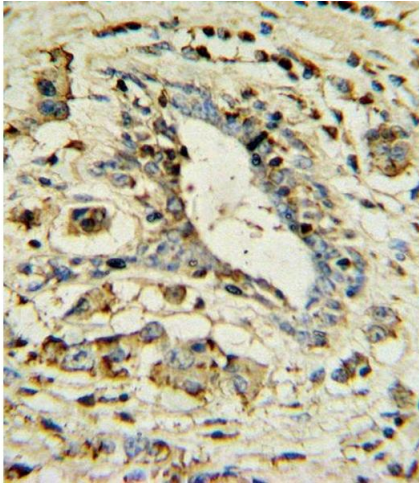
Background:	APOL1 is a secreted high density lipoprotein which binds to apolipoprotein A-I. Apolipoprotein A-I is a relatively abundant plasma protein and is the major apoprotein of HDL. It is involved in the formation of most cholesteryl esters in plasma and also promotes efflux of cholesterol from cells. This apolipoprotein L family member may play a role in lipid exchange and transport throughout the body, as well as in reverse cholesterol transport from peripheral cells to the liver.
Molecular Weight:	43974
Gene ID:	8542
NCBI Accession:	NP_001130012 , NP_001130013 , NP_003652
UniProt:	O14791

Application Details

Application Notes:	WB: 1:1000. IHC-P: 1:10~50. FC: 1:10~50
Restrictions:	For Research Use only

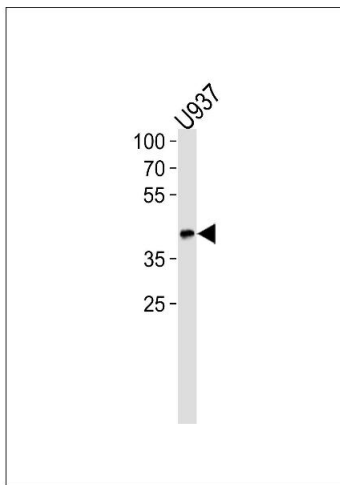
Handling

Format:	Liquid
Buffer:	Purified polyclonal antibody supplied in PBS with 0.09 % (W/V) sodium azide.
Preservative:	Sodium azide
Precaution of Use:	This product contains Sodium azide: a POISONOUS AND HAZARDOUS SUBSTANCE which should be handled by trained staff only.
Storage:	4 °C,-20 °C
Storage Comment:	Maintain refrigerated at 2-8 °C for up to 6 months. For long term storage store at -20 °C in small aliquots to prevent freeze-thaw cycles.
Expiry Date:	6 months



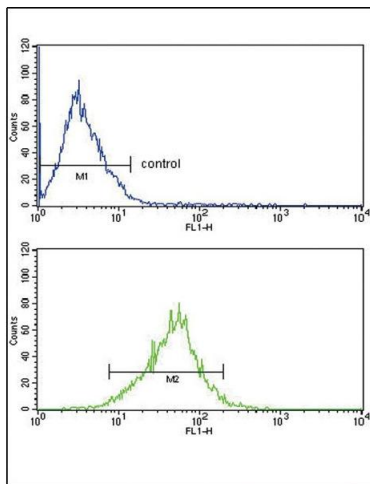
Immunohistochemistry (Paraffin-embedded Sections)

Image 1. OL1 Antibody 7361a IHC analysis in formalin fixed and paraffin embedded human breast carcinoma followed by peroxidase conjugation of the secondary antibody and DAB staining. This data demonstrates the use of the OL1 Antibody for immunohistochemistry. Clinical relevance has not been evaluated.



Western Blotting

Image 2. OL1-BH3 Domain Antibody 7361a western blot analysis in cell line lysates (35 µg/lane). This demonstrates the OL1-BH3 Domain antibody detected the OL1-BH3 Domain protein (arrow).



Flow Cytometry

Image 3. OL1 Antibody (19169) FC analysis of MCF-7 cells (bottom histogram) compared to a negative control cell (top histogram). FITC-conjugated goat-anti-rabbit secondary antibodies were used for the analysis.