

Datasheet for ABIN391549

**anti-Tyrosinase-Related Protein 1 antibody (AA 198-227)**

3 Images

1 Publication

[Go to Product page](#)

## Overview

Quantity:	400 µL
Target:	Tyrosinase-Related Protein 1 (TYRP1)
Binding Specificity:	AA 198-227
Reactivity:	Human
Host:	Rabbit
Clonality:	Polyclonal
Conjugate:	This Tyrosinase-Related Protein 1 antibody is un-conjugated
Application:	Flow Cytometry (FACS), Western Blotting (WB), Immunohistochemistry (Paraffin-embedded Sections) (IHC (p))

## Product Details

Immunogen:	This CATB antibody is generated from rabbits immunized with a KLH conjugated synthetic peptide between 198-227 amino acids from the Central region of human CATB.
Clone:	RB19412
Isotype:	Ig Fraction
Predicted Reactivity:	Pr
Purification:	This antibody is purified through a protein A column, followed by peptide affinity purification.

## Target Details

Target:	Tyrosinase-Related Protein 1 (TYRP1)
---------	--------------------------------------

## Target Details

Alternative Name:	CATB ( <a href="#">TYRP1 Products</a> )
Background:	The protein CATB is a lysosomal cysteine proteinase composed of a dimer of disulfide-linked heavy and light chains, both produced from a single protein precursor. It is also known as amyloid precursor protein secretase and is involved in the proteolytic processing of amyloid precursor protein (APP). Incomplete proteolytic processing of APP has been suggested to be a causative factor in Alzheimer disease, the most common cause of dementia. Overexpression of the protein, which is a member of the peptidase C1 family, has been associated with esophageal adenocarcinoma and other tumors.
Molecular Weight:	37822
Gene ID:	1508
NCBI Accession:	<a href="#">NP_001899</a> , <a href="#">NP_680090</a> , <a href="#">NP_680091</a> , <a href="#">NP_680092</a> , <a href="#">NP_680093</a>
UniProt:	<a href="#">P07858</a>

## Application Details

Application Notes:	WB: 1:1000. IHC-P: 1:10~50. FC: 1:10~50
Restrictions:	For Research Use only

## Handling

Format:	Liquid
Buffer:	Purified polyclonal antibody supplied in PBS with 0.09 % (W/V) sodium azide.
Preservative:	Sodium azide
Precaution of Use:	This product contains Sodium azide: a POISONOUS AND HAZARDOUS SUBSTANCE which should be handled by trained staff only.
Storage:	4 °C,-20 °C
Storage Comment:	Maintain refrigerated at 2-8 °C for up to 6 months. For long term storage store at -20 °C in small aliquots to prevent freeze-thaw cycles.
Expiry Date:	6 months

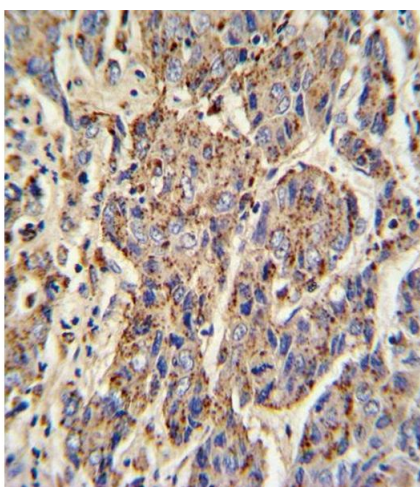
## Publications

Product cited in:	Humphrey, Newcomb, Yu, Hao, Yu, Krajewski, Du, Jhala: "Mixed lineage kinase-3 stabilizes and
-------------------	--

functionally cooperates with TRIBBLES-3 to compromise mitochondrial integrity in cytokine-induced death of pancreatic beta cells." in: **The Journal of biological chemistry**, Vol. 285, Issue 29, pp. 22426-36, (2010) ([PubMed](#)).

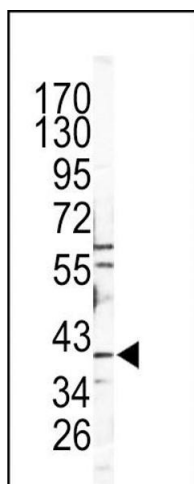
Nagao, Hayashi: "Mixed lineage kinase 2 and hippocalcin are localized in Lewy bodies of Parkinson's disease." in: **Journal of the neurological sciences**, Vol. 281, Issue 1-2, pp. 51-4, (2009) ([PubMed](#)).

## Images



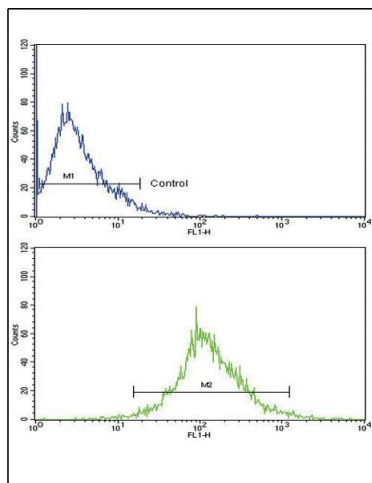
### Immunohistochemistry (Paraffin-embedded Sections)

**Image 1.** Formalin-fixed and paraffin-embedded human hepatocarcinoma with CATB Antibody (Center), which was peroxidase-conjugated to the secondary antibody, followed by DAB staining. This data demonstrates the use of this antibody for immunohistochemistry, clinical relevance has not been evaluated.



### Western Blotting

**Image 2.** Western blot analysis of CATB Antibody (Center) (ABIN391549 and ABIN2841498) in Y79 cell line lysates (35 µg/lane). CATB (arrow) was detected using the purified Pab.



### Flow Cytometry

**Image 3.** Flow cytometric analysis of HepG2 cells using CATB Antibody (Center)(bottom histogram) compared to a negative control cell (top histogram). FITC-conjugated goat-anti-rabbit secondary antibodies were used for the analysis.