

Datasheet for ABIN391551
anti-COL4A1 antibody (N-Term)

3 Images

3 Publications

[Go to Product page](#)

Overview

Quantity:	400 µL
Target:	COL4A1
Binding Specificity:	AA 27-54, N-Term
Reactivity:	Human
Host:	Rabbit
Clonality:	Polyclonal
Conjugate:	This COL4A1 antibody is un-conjugated
Application:	Western Blotting (WB), Immunofluorescence (IF)

Product Details

Immunogen:	This COL4A1 antibody is generated from rabbits immunized with a KLH conjugated synthetic peptide between 27-54 amino acids from the N-terminal region of human COL4A1.
Clone:	RB19425
Isotype:	Ig Fraction
Purification:	This antibody is purified through a protein A column, followed by peptide affinity purification.

Target Details

Target:	COL4A1
Alternative Name:	COL4A1 (COL4A1 Products)
Background:	COL4A1 is the major type IV alpha collagen chain of basement membranes. Like the other

Target Details

members of the type IV collagen gene family, this gene is organized in a head-to-head conformation with another type IV collagen gene so that each gene pair shares a common promoter.

Molecular Weight: 160611

Gene ID: 1282

NCBI Accession: [NP_001836](#)

UniProt: [P02462](#)

Pathways: [Skeletal Muscle Fiber Development](#), [Growth Factor Binding](#)

Application Details

Application Notes: IF: 1:25. WB: 1:1000. WB: 1:1000

Restrictions: For Research Use only

Handling

Format: Liquid

Buffer: Purified polyclonal antibody supplied in PBS with 0.09 % (W/V) sodium azide.

Preservative: Sodium azide

Precaution of Use: This product contains Sodium azide: a POISONOUS AND HAZARDOUS SUBSTANCE which should be handled by trained staff only.

Storage: 4 °C, -20 °C

Storage Comment: Maintain refrigerated at 2-8 °C for up to 6 months. For long term storage store at -20 °C in small aliquots to prevent freeze-thaw cycles.

Expiry Date: 6 months

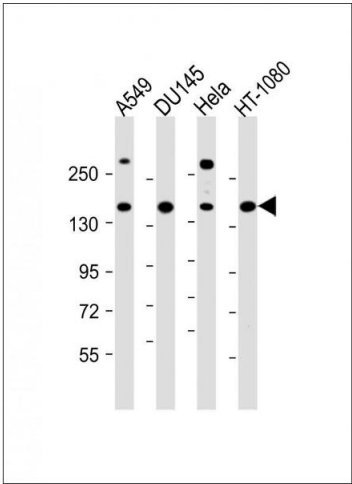
Publications

Product cited in: Lin, Liu, Sun, Yuan, Zhang, Chen: "Establishment and characterization of a tamoxifen-mediated reversible immortalized mouse dental papilla cell line." in: **In vitro cellular & developmental biology. Animal**, Vol. 49, Issue 2, pp. 114-21, (2013) ([PubMed](#)).

Kaushik, Arias, Kwon, Lopez, Athonvarangkul, Sahu, Schwartz, Pessin, Singh: "Loss of

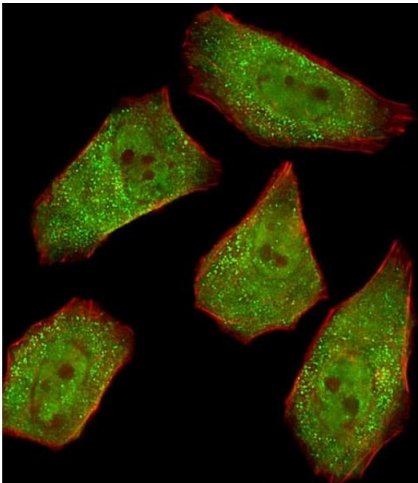
autophagy in hypothalamic POMC neurons impairs lipolysis." in: **EMBO reports**, Vol. 13, Issue 3, pp. 258-65, (2012) ([PubMed](#)).

Images



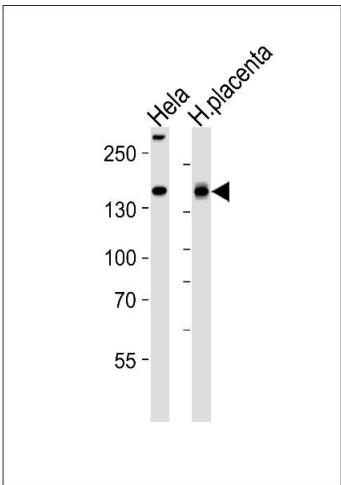
Western Blotting

Image 1. All lanes : Anti-COL4A1 Antibody (N-term) at 1:1000 dilution Lane 1: A549 whole cell lysate Lane 2: D whole cell lysate Lane 3: HeLa whole cell lysate Lane 4: HT-1080 whole cell lysate Lysates/proteins at 20 µg per lane. Secondary Goat Anti-Rabbit IgG, (H+L), Peroxidase conjugated at 1/10000 dilution. Predicted band size : 161 kDa Blocking/Dilution buffer: 5 % NFDM/TBST.



Immunofluorescence

Image 2. Fluorescent image of cells stained with COL4A1 Antibody (N-term) A. A was diluted at 1:25 dilution. An Alexa Fluor 488-conjugated goat anti-rabbit IgG at 1:400 dilution was used as the secondary antibody (green). Cytoplasmic actin was counterstained with Alexa Fluor® 555 conjugated with Phalloidin (red).



Western Blotting

Image 3. Western blot analysis of lysates from HeLa cell line and human placenta tissue lysate(from left to right), using COL4A1 Antibody (N-term) A. A was diluted at 1:1000 at each lane. A goat anti-rabbit IgG H&L(HRP) at 1:5000 dilution was used as the secondary antibody. Lysates at 35 µg per lane.