

Datasheet for ABIN391554
anti-BCL6 antibody (C-Term)

3 Images

[Go to Product page](#)

Overview

Quantity:	400 µL
Target:	BCL6
Binding Specificity:	AA 519-547, C-Term
Reactivity:	Human, Mouse
Host:	Rabbit
Clonality:	Polyclonal
Conjugate:	This BCL6 antibody is un-conjugated
Application:	Western Blotting (WB), Flow Cytometry (FACS), Immunohistochemistry (Paraffin-embedded Sections) (IHC (p))

Product Details

Immunogen:	This Bcl-6 antibody is generated from rabbits immunized with a KLH conjugated synthetic peptide between 519-547 amino acids from the C-terminal region of human Bcl-6.
Clone:	RB19464
Isotype:	IgG
Purification:	This antibody is purified through a protein A column, followed by peptide affinity purification.

Target Details

Target:	BCL6
Alternative Name:	Bcl-6 (BCL6 Products)

Target Details

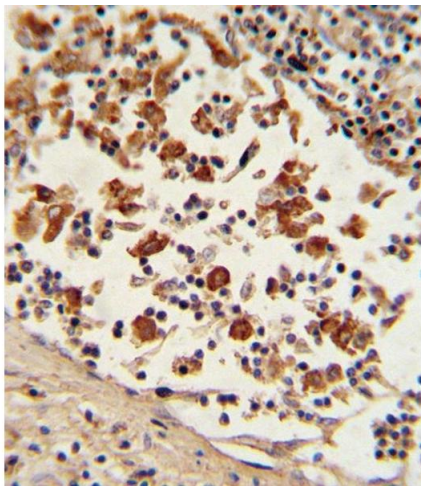
Background:	BCL6 is a zinc finger transcription factor and contains an N-terminal POZ domain. This protein acts as a sequence-specific repressor of transcription, and has been shown to modulate the transcription of START-dependent IL-4 responses of B cells. This protein can interact with a variety of POZ-containing proteins that function as transcription corepressors.
Molecular Weight:	78846
Gene ID:	604
NCBI Accession:	NP_001124317 , NP_001128210 , NP_001697
UniProt:	P41182
Pathways:	Chromatin Binding , Regulation of Leukocyte Mediated Immunity , Production of Molecular Mediator of Immune Response , Protein targeting to Nucleus

Application Details

Application Notes:	WB: 1:1000. IHC-P: 1:10~50. FC: 1:10~50
Restrictions:	For Research Use only

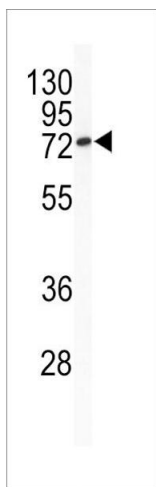
Handling

Format:	Liquid
Buffer:	Purified polyclonal antibody supplied in PBS with 0.09 % (W/V) sodium azide.
Preservative:	Sodium azide
Precaution of Use:	This product contains Sodium azide: a POISONOUS AND HAZARDOUS SUBSTANCE which should be handled by trained staff only.
Storage:	4 °C, -20 °C
Storage Comment:	Maintain refrigerated at 2-8 °C for up to 6 months. For long term storage store at -20 °C in small aliquots to prevent freeze-thaw cycles.
Expiry Date:	6 months



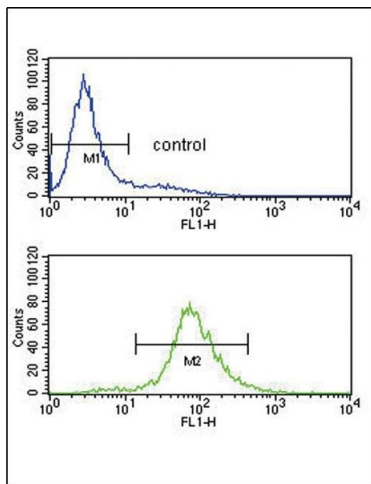
Immunohistochemistry (Paraffin-embedded Sections)

Image 1. Formalin-fixed and paraffin-embedded human lymph tissue with Bcl-6 Antibody (C-term), which was peroxidase-conjugated to the secondary antibody, followed by DAB staining. This data demonstrates the use of this antibody for immunohistochemistry, clinical relevance has not been evaluated.



Western Blotting

Image 2. Western blot analysis of Bcl-6 Antibody (C-term) (ABIN391554 and ABIN2841500) in mouse cerebellum tissue lysates (35 µg/lane). BCL6 (arrow) was detected using the purified Pab.



Flow Cytometry

Image 3. Bcl-6 Antibody (C-term) (ABIN391554 and ABIN2841500) flow cytometry analysis of Jurkat cells (bottom histogram) compared to a negative control cell (top histogram). FITC-conjugated goat-anti-rabbit secondary antibodies were used for the analysis.