



[Go to Product page](#)

Datasheet for ABIN391572
anti-FKBP10 antibody (AA 57-87)

3 Images

Overview

Quantity:	400 µL
Target:	FKBP10
Binding Specificity:	AA 57-87
Reactivity:	Human
Host:	Rabbit
Clonality:	Polyclonal
Conjugate:	This FKBP10 antibody is un-conjugated
Application:	Western Blotting (WB), Flow Cytometry (FACS), Immunohistochemistry (Paraffin-embedded Sections) (IHC (p))

Product Details

Immunogen:	This FKBP10 antibody is generated from rabbits immunized with a KLH conjugated synthetic peptide between 57-87 amino acids of human FKBP10.
Clone:	RB19279
Isotype:	IgG
Purification:	This antibody is purified through a protein A column, followed by peptide affinity purification.

Target Details

Target:	FKBP10
Alternative Name:	FKBP10 (FKBP10 Products)

Target Details

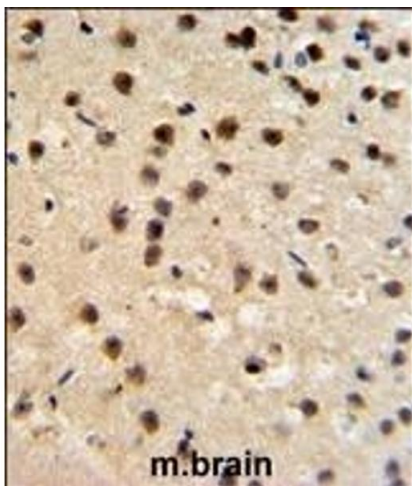
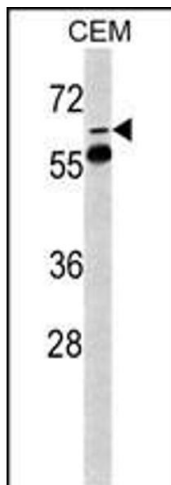
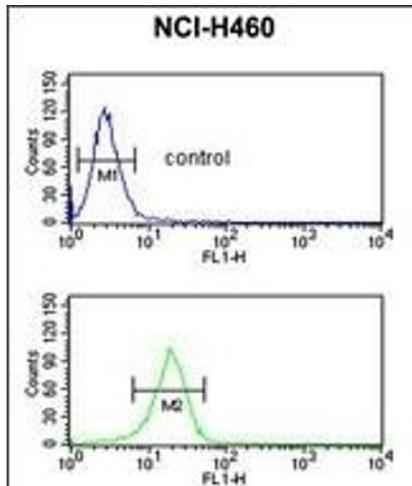
Background:	The protein belongs to the FKBP-type peptidyl-prolyl cis/trans isomerase family. It is located in endoplasmic reticulum and acts as molecular chaperones.
Molecular Weight:	64245
Gene ID:	60681
NCBI Accession:	NP_068758
UniProt:	Q96AY3
Pathways:	SARS-CoV-2 Protein Interactome

Application Details

Application Notes:	WB: 1:1000. IHC-P: 1:50~100. FC: 1:10~50
Restrictions:	For Research Use only

Handling

Format:	Liquid
Buffer:	Purified polyclonal antibody supplied in PBS with 0.09 % (W/V) sodium azide.
Preservative:	Sodium azide
Precaution of Use:	This product contains Sodium azide: a POISONOUS AND HAZARDOUS SUBSTANCE which should be handled by trained staff only.
Storage:	4 °C,-20 °C
Storage Comment:	Maintain refrigerated at 2-8 °C for up to 6 months. For long term storage store at -20 °C in small aliquots to prevent freeze-thaw cycles.
Expiry Date:	6 months



Flow Cytometry

Image 1. FKBP10 Antibody (N-term) (ABIN391572 and ABIN2841509) flow cytometric analysis of NCI- cells (bottom histogram) compared to a negative control cell (top histogram). FITC-conjugated goat-anti-rabbit secondary antibodies were used for the analysis.

Western Blotting

Image 2. Western blot analysis of FKBP10 Antibody (N-term) (ABIN391572 and ABIN2841509) in CEM cell line lysates (35 µg/lane). FKBP10 (arrow) was detected using the purified Pab.

Immunohistochemistry (Paraffin-embedded Sections)

Image 3. FKBP10 Antibody (N-term) (ABIN391572 and ABIN2841509) IHC analysis in formalin fixed and paraffin embedded mouse brain tissue followed by peroxidase conjugation of the secondary antibody and DAB staining. This data demonstrates the use of the FKBP10 Antibody (N-term) for immunohistochemistry. Clinical relevance has not been evaluated.