

Datasheet for ABIN391577

**anti-FBP1 antibody (AA 125-156)**[Go to Product page](#)**4** Images

## Overview

Quantity:	400 µL
Target:	FBP1
Binding Specificity:	AA 125-156
Reactivity:	Human, Mouse
Host:	Rabbit
Clonality:	Polyclonal
Conjugate:	This FBP1 antibody is un-conjugated
Application:	Western Blotting (WB), Immunohistochemistry (Paraffin-embedded Sections) (IHC (p))

## Product Details

Immunogen:	This FBP1 antibody is generated from rabbits immunized with a KLH conjugated synthetic peptide between 125-156 amino acids from the Central region of human FBP1.
Clone:	RB19299
Isotype:	Ig Fraction
Purification:	This antibody is prepared by Saturated Ammonium Sulfate (SAS) precipitation followed by dialysis against PBS.

## Target Details

Target:	FBP1
Alternative Name:	FBP1 ( <a href="#">FBP1 Products</a> )

## Target Details

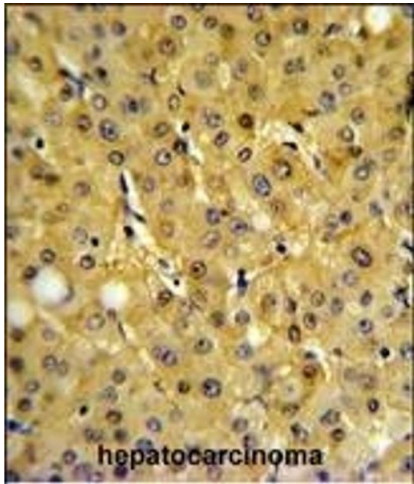
Background:	Fructose-1,6-bisphosphatase 1, a gluconeogenesis regulatory enzyme, catalyzes the hydrolysis of fructose 1,6-bisphosphate to fructose 6-phosphate and inorganic phosphate. Fructose-1,6-diphosphatase deficiency is associated with hypoglycemia and metabolic acidosis.
Molecular Weight:	36842
Gene ID:	2203
NCBI Accession:	<a href="#">NP_000498</a> , <a href="#">NP_001121100</a>
UniProt:	<a href="#">P09467</a>
Pathways:	<a href="#">Cellular Glucan Metabolic Process</a> , <a href="#">Regulation of Carbohydrate Metabolic Process</a> , <a href="#">Dicarboxylic Acid Transport</a>

## Application Details

Application Notes:	WB: 1:1000. WB: 1:1000. WB: 1:1000. IHC-P: 1:10~50
Restrictions:	For Research Use only

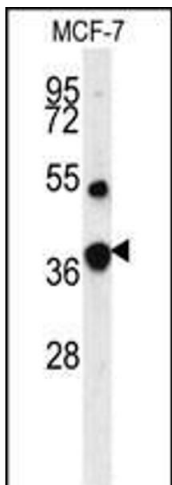
## Handling

Format:	Liquid
Buffer:	Purified polyclonal antibody supplied in PBS with 0.09 % (W/V) sodium azide.
Preservative:	Sodium azide
Precaution of Use:	This product contains Sodium azide: a POISONOUS AND HAZARDOUS SUBSTANCE which should be handled by trained staff only.
Storage:	4 °C,-20 °C
Storage Comment:	Maintain refrigerated at 2-8 °C for up to 6 months. For long term storage store at -20 °C in small aliquots to prevent freeze-thaw cycles.
Expiry Date:	6 months



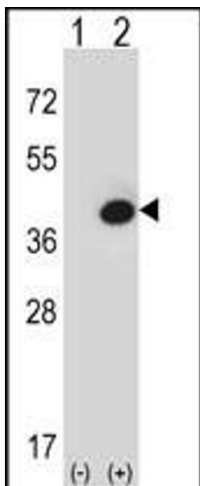
#### Immunohistochemistry (Paraffin-embedded Sections)

**Image 1.** FBP1 Antibody (Center) (ABIN391577 and ABIN2841512) IHC analysis in formalin fixed and paraffin embedded human hepatocarcinoma followed by peroxidase conjugation of the secondary antibody and DAB staining. This data demonstrates the use of the FBP1 Antibody (Center) for immunohistochemistry. Clinical relevance has not been evaluated.



#### Western Blotting

**Image 2.** Western blot analysis of FBP1 Antibody (Center) (ABIN391577 and ABIN2841512) in MCF-7 cell line lysates (35 µg/lane). FBP1 (arrow) was detected using the purified Pab.



#### Western Blotting

**Image 3.** Western blot analysis of FBP1 (arrow) using rabbit polyclonal FBP1 Antibody (Center) (ABIN391577 and ABIN2841512). 293 cell lysates (2 µg/lane) either nontransfected (Lane 1) or transiently transfected (Lane 2) with the FBP1 gene.

Please check the [product details page](#) for more images. Overall 4 images are available for ABIN391577.