

Datasheet for ABIN391584
anti-IMPDH2 antibody (AA 180-210)[Go to Product page](#)

3 Images

Overview

Quantity:	400 µL
Target:	IMPDH2
Binding Specificity:	AA 180-210
Reactivity:	Human
Host:	Rabbit
Clonality:	Polyclonal
Conjugate:	This IMPDH2 antibody is un-conjugated
Application:	Western Blotting (WB), Immunohistochemistry (Paraffin-embedded Sections) (IHC (p)), Flow Cytometry (FACS)

Product Details

Immunogen:	This IMPDH2 antibody is generated from rabbits immunized with a KLH conjugated synthetic peptide between 180-210 amino acids from the Central region of human IMPDH2.
Clone:	RB19383
Isotype:	Ig Fraction
Predicted Reactivity:	B, M, Rat, Ha, Zf
Purification:	This antibody is prepared by Saturated Ammonium Sulfate (SAS) precipitation followed by dialysis against PBS.

Target Details

Target:	IMPDH2
---------	--------

Target Details

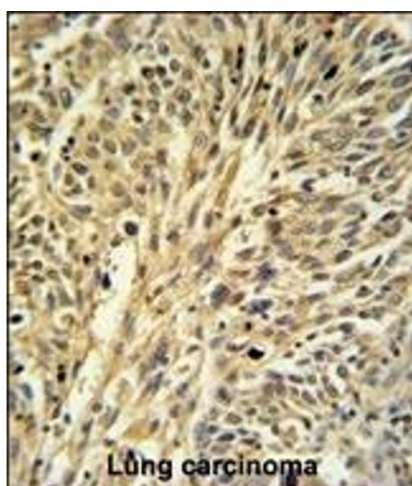
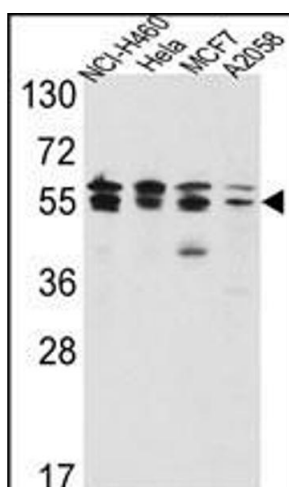
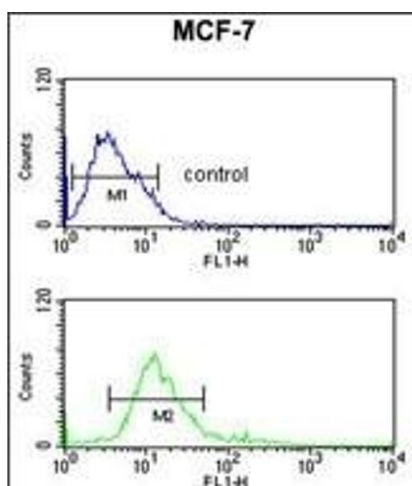
Alternative Name:	IMPDH2 (IMPDH2 Products)
Background:	IMPDH2 is the rate-limiting enzyme in the de novo guanine nucleotide biosynthesis. It is thus involved in maintaining cellular guanine deoxy- and ribonucleotide pools needed for DNA and RNA synthesis. The protein catalyzes the NAD-dependent oxidation of inosine-5'-monophosphate into xanthine-5'-monophosphate, which is then converted into guanosine-5'-monophosphate. Its gene is up-regulated in some neoplasms, suggesting it may play a role in malignant transformation.
Molecular Weight:	55805
Gene ID:	3615
NCBI Accession:	NP_000875
UniProt:	P12268
Pathways:	Ribonucleoside Biosynthetic Process , SARS-CoV-2 Protein Interactome

Application Details

Application Notes:	WB: 1:1000. IHC-P: 1:50~100. FC: 1:10~50
Restrictions:	For Research Use only

Handling

Format:	Liquid
Buffer:	Purified polyclonal antibody supplied in PBS with 0.09 % (W/V) sodium azide.
Preservative:	Sodium azide
Precaution of Use:	This product contains Sodium azide: a POISONOUS AND HAZARDOUS SUBSTANCE which should be handled by trained staff only.
Storage:	4 °C, -20 °C
Storage Comment:	Maintain refrigerated at 2-8 °C for up to 6 months. For long term storage store at -20 °C in small aliquots to prevent freeze-thaw cycles.
Expiry Date:	6 months



Flow Cytometry

Image 1. IDH2 Antibody (Center) (ABIN391584 and ABIN2841516) flow cytometric analysis of MCF-7 cells (bottom histogram) coated to a negative control cell (top histogram). FITC-conjugated goat-anti-rabbit secondary antibodies were used for the analysis.

Western Blotting

Image 2. Western blot analysis of IDH2 Antibody (Center) (ABIN391584 and ABIN2841516) in NCI-H460, Hela, MCF7, cell line lysates (35 µg/lane). IDH2 (arrow) was detected using the purified Pab.

Immunohistochemistry (Paraffin-embedded Sections)

Image 3. IDH2 Antibody (Center) (ABIN391584 and ABIN2841516) IHC analysis in formalin fixed and paraffin embedded human Lung carcinoma followed by peroxidase conjugation of the secondary antibody and DAB staining. This data demonstrates the use of the IDH2 Antibody (Center) for immunohistochemistry. Clinical relevance has not been evaluated.