



[Go to Product page](#)

Datasheet for ABIN391586  
**anti-GGT5 antibody (N-Term)**

4 Images

Overview

Quantity:	400 µL
Target:	GGT5
Binding Specificity:	AA 130-156, N-Term
Reactivity:	Human, Mouse
Host:	Rabbit
Clonality:	Polyclonal
Conjugate:	This GGT5 antibody is un-conjugated
Application:	Western Blotting (WB), Immunohistochemistry (Paraffin-embedded Sections) (IHC (p)), Flow Cytometry (FACS)

Product Details

Immunogen:	This GGTLA1 antibody is generated from rabbits immunized with a KLH conjugated synthetic peptide between 130-156 amino acids from the N-terminal region of human GGTLA1.
Clone:	RB18220
Isotype:	Ig Fraction
Purification:	This antibody is prepared by Saturated Ammonium Sulfate (SAS) precipitation followed by dialysis against PBS.

Target Details

Target:	GGT5
Alternative Name:	GGTLA1 ( <a href="#">GGT5 Products</a> )

## Target Details

---

Background:	This gene is a member of gamma-glutamyl transpeptidase enzymes. This enzyme consists of a heavy and a light chain, and is able to hydrolyze the gamma-glutamyl moiety of glutathione. It converts leukotriene C4 to leukotriene D4, however, it doesn't convert synthetic substrates that are commonly used to assay gamma-glutamyl transpeptidase.
Molecular Weight:	62261
Gene ID:	2687
NCBI Accession:	<a href="#">NP_001093251</a> , <a href="#">NP_001093252</a> , <a href="#">NP_004112</a>
UniProt:	<a href="#">P36269</a>

## Application Details

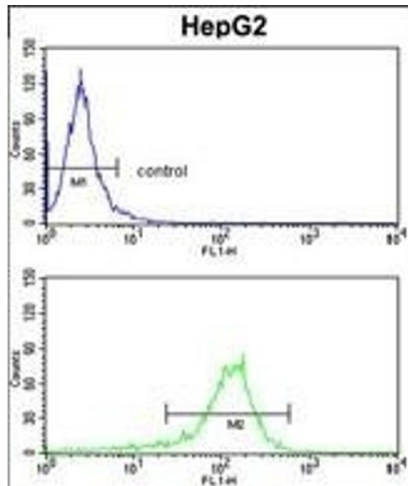
---

Application Notes:	WB: 1:1000. WB: 1:1000. IHC-P: 1:50~100. FC: 1:10~50
Restrictions:	For Research Use only

## Handling

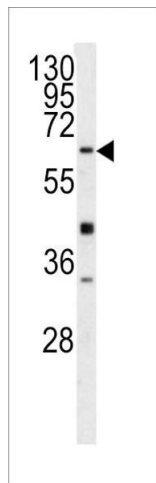
---

Format:	Liquid
Buffer:	Purified polyclonal antibody supplied in PBS with 0.09 % (W/V) sodium azide.
Preservative:	Sodium azide
Precaution of Use:	This product contains Sodium azide: a POISONOUS AND HAZARDOUS SUBSTANCE which should be handled by trained staff only.
Storage:	4 °C,-20 °C
Storage Comment:	Maintain refrigerated at 2-8 °C for up to 6 months. For long term storage store at -20 °C in small aliquots to prevent freeze-thaw cycles.
Expiry Date:	6 months



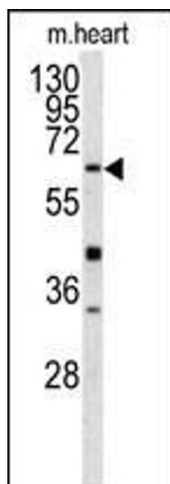
### Flow Cytometry

**Image 1.** GGTLA1 Antibody (N-term) (ABIN391586 and ABIN2841518) flow cytometry analysis of HepG2 cells (bottom histogram) compared to a negative control cell (top histogram). FITC-conjugated goat-anti-rabbit secondary antibodies were used for the analysis.



### Western Blotting

**Image 2.** Western blot analysis of GGTLA1 antibody (N-term) (ABIN391586 and ABIN2841518) in Y99 cell line lysates (35 µg/lane). GGTLA1 (arrow) was detected using the purified Pab.



### Western Blotting

**Image 3.** Western blot analysis of GGTLA1 antibody (N-term) (ABIN391586 and ABIN2841518) in mouse heart tissue lysates (35 µg/lane). GGTLA1 (arrow) was detected using the purified Pab.

Please check the [product details page](#) for more images. Overall 4 images are available for ABIN391586.