

Datasheet for ABIN391602

anti-Casein Kinase 1 gamma 2 antibody (C-Term)**2** Images[Go to Product page](#)

Overview

Quantity:	400 µL
Target:	Casein Kinase 1 gamma 2 (CSNK1G2)
Binding Specificity:	AA 329-360, C-Term
Reactivity:	Human
Host:	Rabbit
Clonality:	Polyclonal
Conjugate:	This Casein Kinase 1 gamma 2 antibody is un-conjugated
Application:	Western Blotting (WB), Immunohistochemistry (Paraffin-embedded Sections) (IHC (p))

Product Details

Immunogen:	This CSNK1G2 antibody is generated from rabbits immunized with a KLH conjugated synthetic peptide between 329-360 amino acids from the C-terminal region of human CSNK1G2.
Clone:	RB0852
Isotype:	Ig Fraction
Purification:	This antibody is prepared by Saturated Ammonium Sulfate (SAS) precipitation followed by dialysis against PBS.

Target Details

Target:	Casein Kinase 1 gamma 2 (CSNK1G2)
Alternative Name:	Casein Kinase 1 gamma 2 (CK1G2) (CSNK1G2 Products)

Target Details

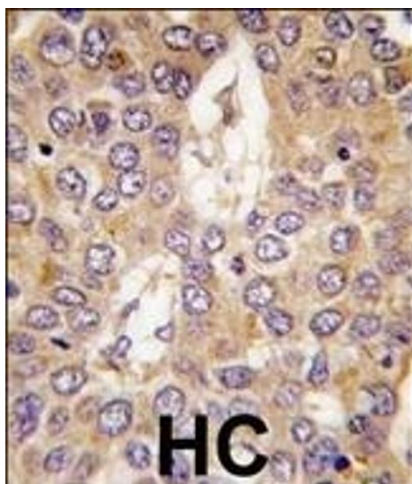
Background:	Protein kinases are enzymes that transfer a phosphate group from a phosphate donor, generally the γ phosphate of ATP, onto an acceptor amino acid in a substrate protein. By this basic mechanism, protein kinases mediate most of the signal transduction in eukaryotic cells, regulating cellular metabolism, transcription, cell cycle progression, cytoskeletal rearrangement and cell movement, apoptosis, and differentiation. With more than 500 gene products, the protein kinase family is one of the largest families of proteins in eukaryotes. The family has been classified in 8 major groups based on sequence comparison of their tyrosine (PTK) or serine/threonine (STK) kinase catalytic domains. The casein kinase 1 (CK1) group consists of 12 kinases including CK1, TTBK (tau tubulin kinase), and VRK (vaccinia-related kinase) families. The receptor guanylate cyclase (RGC) group consists of 5 kinases similar in domain sequence to TKs (ANP, CYG).
Molecular Weight:	47457
Gene ID:	1455
NCBI Accession:	NP_001310
UniProt:	P78368
Pathways:	Hedgehog Signaling

Application Details

Application Notes:	WB: 1:1000. IHC-P: 1:10~50
Restrictions:	For Research Use only

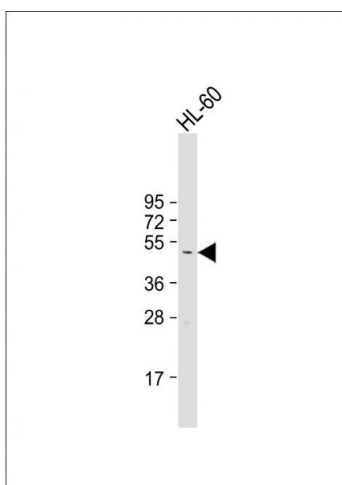
Handling

Format:	Liquid
Buffer:	Purified polyclonal antibody supplied in PBS with 0.09 % (W/V) sodium azide.
Preservative:	Sodium azide
Precaution of Use:	This product contains Sodium azide: a POISONOUS AND HAZARDOUS SUBSTANCE which should be handled by trained staff only.
Storage:	4 °C, -20 °C
Storage Comment:	Maintain refrigerated at 2-8 °C for up to 6 months. For long term storage store at -20 °C in small aliquots to prevent freeze-thaw cycles.
Expiry Date:	6 months



Immunohistochemistry (Paraffin-embedded Sections)

Image 1. Formalin-fixed and paraffin-embedded human hepatocarcinoma tissue reacted with CK1g2 antibody (C-term), which was peroxidase-conjugated to the secondary antibody, followed by DAB staining. This data demonstrates the use of this antibody for immunohistochemistry, clinical relevance has not been evaluated.



Western Blotting

Image 2. Anti-CK1g2 Antibody at 1:1000 dilution + HL-60 whole cell lysate Lysates/proteins at 20 µg per lane. Secondary Goat Anti-Rabbit IgG, (H+L), Peroxidase conjugated at 1/10000 dilution. Predicted band size : 47 kDa Blocking/Dilution buffer: 5 % NFDM/TBST.