

Datasheet for ABIN391614
anti-Menin antibody (AA 584-615)

3 Images

[Go to Product page](#)

Overview

Quantity:	400 µL
Target:	Menin (MEN1)
Binding Specificity:	AA 584-615
Reactivity:	Human
Host:	Rabbit
Clonality:	Polyclonal
Conjugate:	This Menin antibody is un-conjugated
Application:	Western Blotting (WB), Immunofluorescence (IF), Immunohistochemistry (Paraffin-embedded Sections) (IHC (p))

Product Details

Immunogen:	This MEN1 antibody is generated from rabbits immunized with a KLH conjugated synthetic peptide between 584-615 amino acids from human MEN1.
Clone:	RB0543
Isotype:	Ig Fraction
Predicted Reactivity:	M, Rat
Purification:	This antibody is prepared by Saturated Ammonium Sulfate (SAS) precipitation followed by dialysis against PBS.

Target Details

Target:	Menin (MEN1)
---------	--------------

Target Details

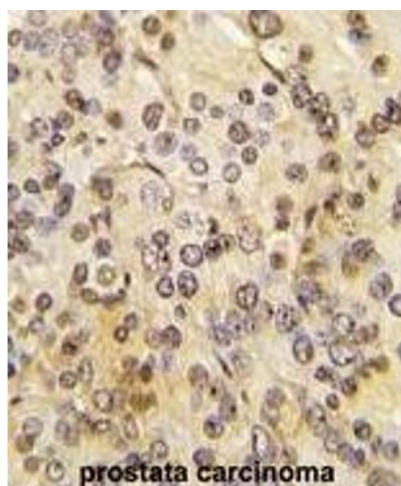
Alternative Name:	MEN1 (MEN1 Products)
Background:	Menin (MEN1) is a putative tumor suppressor associated with a syndrome known as multiple endocrine neoplasia type 1. In vitro studies have shown menin is localized to the nucleus, possesses two functional nuclear localization signals, and inhibits transcriptional activation by JunD, however, the function of this protein is not known.
Molecular Weight:	68023
Gene ID:	4221
NCBI Accession:	NP_000235 , NP_570711 , NP_570712 , NP_570713 , NP_570714 , NP_570715 , NP_570716
UniProt:	O00255
Pathways:	Chromatin Binding , Positive Regulation of Endopeptidase Activity

Application Details

Application Notes:	IF: 1:10~50. WB: 1:1000. IHC-P: 1:10~50
Restrictions:	For Research Use only

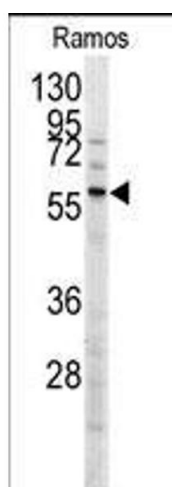
Handling

Format:	Liquid
Buffer:	Purified polyclonal antibody supplied in PBS with 0.09 % (W/V) sodium azide.
Preservative:	Sodium azide
Precaution of Use:	This product contains Sodium azide: a POISONOUS AND HAZARDOUS SUBSTANCE which should be handled by trained staff only.
Storage:	4 °C, -20 °C
Storage Comment:	Maintain refrigerated at 2-8 °C for up to 6 months. For long term storage store at -20 °C in small aliquots to prevent freeze-thaw cycles.
Expiry Date:	6 months



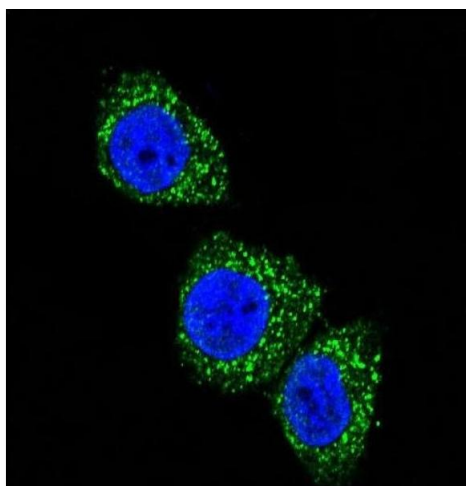
Immunohistochemistry (Paraffin-embedded Sections)

Image 1. Formalin-fixed and paraffin-embedded human prostate carcinoma tissue reacted with MEN1 Antibody (ABIN391614 and ABIN2841535), which was peroxidase-conjugated to the secondary antibody, followed by DAB staining. This data demonstrates the use of this antibody for immunohistochemistry, clinical relevance has not been evaluated.



Western Blotting

Image 2. Western blot analysis of anti-MEN1 Antibody (ABIN391614 and ABIN2841535) in Ramos cell line lysates (35 µg/lane). MEN1 (arrow) was detected using the purified Pab.



Immunofluorescence

Image 3. Confocal immunofluorescent analysis of MEN1 Antibody (ABIN391614 and ABIN2841535) with HeLa cell followed by Alexa Fluor 488-conjugated goat anti-rabbit IgG (green). DAPI was used to stain the cell nuclear (blue).