



[Go to Product page](#)

Datasheet for ABIN391619

## anti-Annexin A2 antibody (N-Term)

6 Images

2 Publications

### Overview

Quantity:	400 µL
Target:	Annexin A2 (ANXA2)
Binding Specificity:	AA 19-49, N-Term
Reactivity:	Human, Mouse
Host:	Rabbit
Clonality:	Polyclonal
Conjugate:	This Annexin A2 antibody is un-conjugated
Application:	Western Blotting (WB), Immunohistochemistry (Paraffin-embedded Sections) (IHC (p))

### Product Details

Immunogen:	This ANXA2 antibody is generated from rabbits immunized with a KLH conjugated synthetic peptide between 19-49 amino acids from the N-terminal region of human ANXA2.
Clone:	RB15421
Isotype:	Ig Fraction
Predicted Reactivity:	B, Pig, Rat, Sh
Purification:	This antibody is purified through a protein A column, followed by peptide affinity purification.

### Target Details

Target:	Annexin A2 (ANXA2)
Alternative Name:	ANXA2 ( <a href="#">ANXA2 Products</a> )

## Target Details

---

Background:	ANXA2 is a member of the annexin family. Members of this calcium-dependent phospholipid-binding protein family play a role in the regulation of cellular growth and in signal transduction pathways. This protein functions as an autocrine factor which heightens osteoclast formation and bone resorption.
Molecular Weight:	38604
Gene ID:	302
NCBI Accession:	<a href="#">NP_001002857</a> , <a href="#">NP_001002858</a> , <a href="#">NP_001129487</a> , <a href="#">NP_004030</a>
UniProt:	<a href="#">P07355</a>
Pathways:	<a href="#">S100 Proteins</a>

## Application Details

---

Application Notes:	WB: 1:1000. WB: 1:1000. WB: 1:1000. WB: 1:2000. IHC-P: 1:10~50. IHC-P: 1:25
Restrictions:	For Research Use only

## Handling

---

Format:	Liquid
Buffer:	Purified polyclonal antibody supplied in PBS with 0.09 % (W/V) sodium azide.
Preservative:	Sodium azide
Precaution of Use:	This product contains Sodium azide: a POISONOUS AND HAZARDOUS SUBSTANCE which should be handled by trained staff only.
Storage:	4 °C,-20 °C
Storage Comment:	Maintain refrigerated at 2-8 °C for up to 6 months. For long term storage store at -20 °C in small aliquots to prevent freeze-thaw cycles.
Expiry Date:	6 months

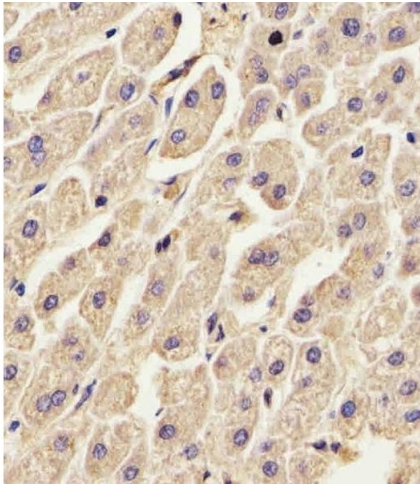
## Publications

---

Product cited in:	Humphrey, Newcomb, Yu, Hao, Yu, Krajewski, Du, Jhala: "Mixed lineage kinase-3 stabilizes and functionally cooperates with TRIBBLES-3 to compromise mitochondrial integrity in cytokine-induced death of pancreatic beta cells." in: <b>The Journal of biological chemistry</b> , Vol. 285, Issue 29, pp. 22426-36, (2010) ( <a href="#">PubMed</a> ).
-------------------	---

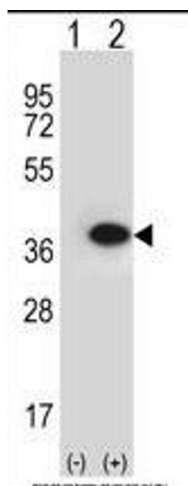
Nagao, Hayashi: "Mixed lineage kinase 2 and hippocalcin are localized in Lewy bodies of Parkinson's disease." in: **Journal of the neurological sciences**, Vol. 281, Issue 1-2, pp. 51-4, (2009) ([PubMed](#)).

Images



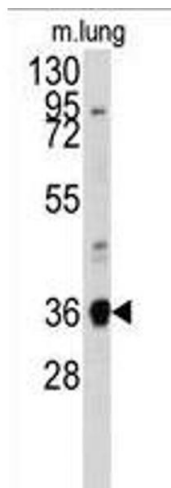
**Immunohistochemistry (Paraffin-embedded Sections)**

**Image 1.** (ABIN391619 and ABIN2841538) staining ANXA2 in Human liver tissue sections by Immunohistochemistry (IHC-P - paraformaldehyde-fixed, paraffin-embedded sections). Tissue was fixed with formaldehyde and blocked with 3 % BSA for 0.5 hour at room temperature, antigen retrieval was by heat mediation with a citrate buffer (pH 6). Samples were incubated with primary antibody (1/25) for 1 hours at 37 °C. A undiluted biotinylated goat polyvalent antibody was used as the secondary antibody.



**Western Blotting**

**Image 2.** Western blot analysis of ANXA2 (arrow) using rabbit polyclonal ANXA2 Antibody (N-term) (ABIN391619 and ABIN2841538). 293 cell lysates (2 µg/lane) either nontransfected (Lane 1) or transiently transfected (Lane 2) with the ANXA2 gene.



### Western Blotting

**Image 3.** Western blot analysis of anti-ANXA2 Antibody (N-term) (ABIN391619 and ABIN2841538) in mouse lung tissue lysates (35 µg/lane). ANXA2(arrow) was detected using the purified Pab.

Please check the [product details page](#) for more images. Overall 6 images are available for ABIN391619.