



[Go to Product page](#)

Datasheet for ABIN391620

anti-Annexin A2 antibody (C-Term)

3 Images

Overview

Quantity:	400 µL
Target:	Annexin A2 (ANXA2)
Binding Specificity:	AA 287-313, C-Term
Reactivity:	Human
Host:	Rabbit
Clonality:	Polyclonal
Conjugate:	This Annexin A2 antibody is un-conjugated
Application:	Western Blotting (WB), Immunohistochemistry (Paraffin-embedded Sections) (IHC (p)), Immunofluorescence (IF)

Product Details

Immunogen:	This ANXA2 antibody is generated from rabbits immunized with a KLH conjugated synthetic peptide between 287-313 amino acids from the C-terminal region of human ANXA2.
Clone:	RB15467
Isotype:	Ig Fraction
Predicted Reactivity:	M, Pig, Rat
Purification:	This antibody is prepared by Saturated Ammonium Sulfate (SAS) precipitation followed by dialysis against PBS.

Target Details

Target:	Annexin A2 (ANXA2)
---------	--------------------

Target Details

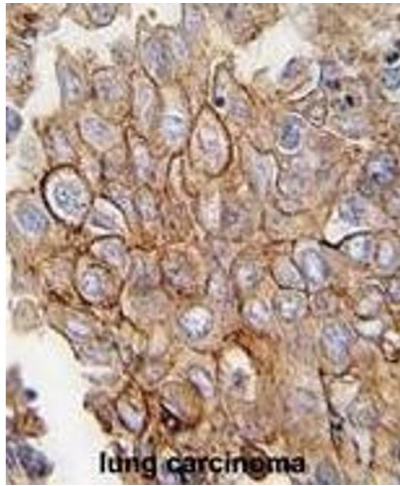
Alternative Name:	ANXA2 (ANXA2 Products)
Background:	ANXA2 is a member of the annexin family. Members of this calcium-dependent phospholipid-binding protein family play a role in the regulation of cellular growth and in signal transduction pathways. This protein functions as an autocrine factor which heightens osteoclast formation and bone resorption.
Molecular Weight:	38604
Gene ID:	302
NCBI Accession:	NP_001002857 , NP_001002858 , NP_001129487 , NP_004030
UniProt:	P07355
Pathways:	S100 Proteins

Application Details

Application Notes:	IF: 1:10~50. WB: 1:1000. IHC-P: 1:10~50
Restrictions:	For Research Use only

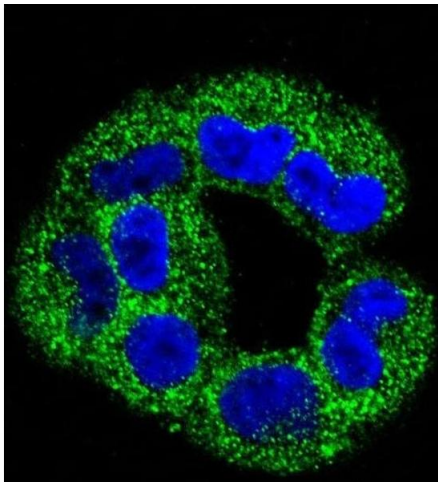
Handling

Format:	Liquid
Buffer:	Purified polyclonal antibody supplied in PBS with 0.09 % (W/V) sodium azide.
Preservative:	Sodium azide
Precaution of Use:	This product contains Sodium azide: a POISONOUS AND HAZARDOUS SUBSTANCE which should be handled by trained staff only.
Storage:	4 °C, -20 °C
Storage Comment:	Maintain refrigerated at 2-8 °C for up to 6 months. For long term storage store at -20 °C in small aliquots to prevent freeze-thaw cycles.
Expiry Date:	6 months



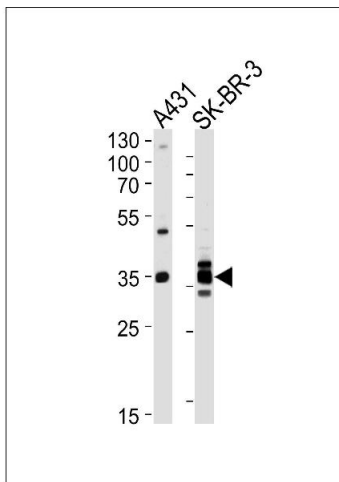
Immunohistochemistry (Paraffin-embedded Sections)

Image 1. Formalin-fixed and paraffin-embedded human lung carcinoma tissue reacted with ANXA2 antibody (C-term) (ABIN391620 and ABIN2841539), which was peroxidase-conjugated to the secondary antibody, followed by DAB staining. This data demonstrates the use of this antibody for immunohistochemistry, clinical relevance has not been evaluated.



Immunofluorescence

Image 2. Confocal immunofluorescent analysis of ANXA2 Antibody (C-term) (ABIN391620 and ABIN2841539) with cell followed by Alexa Fluor 488-conjugated goat anti-rabbit IgG (green). DI was used to stain the cell nuclear (blue).



Western Blotting

Image 3. Western blot analysis of lysates from A431, SK-BR-3 cell line (from left to right), using ANXA2 Antibody (C-term) (ABIN391620 and ABIN2841539). (ABIN391620 and ABIN2841539) was diluted at 1:1000 at each lane. A goat anti-rabbit IgG H&L(HRP) at 1:5000 dilution was used as the secondary antibody. Lysates at 35 µg per lane.