

Datasheet for ABIN391638  
**anti-HIBCH antibody (AA 183-209)**



[Go to Product page](#)

2 Images

## Overview

Quantity:	400 µL
Target:	HIBCH
Binding Specificity:	AA 183-209
Reactivity:	Human
Host:	Rabbit
Clonality:	Polyclonal
Conjugate:	This HIBCH antibody is un-conjugated
Application:	Western Blotting (WB), Immunohistochemistry (Paraffin-embedded Sections) (IHC (p))

## Product Details

Immunogen:	This HIBCH antibody is generated from rabbits immunized with a KLH conjugated synthetic peptide between 183-209 amino acids from the Central region of human HIBCH.
Clone:	RB18227
Isotype:	Ig Fraction
Purification:	This antibody is prepared by Saturated Ammonium Sulfate (SAS) precipitation followed by dialysis against PBS.

## Target Details

Target:	HIBCH
Alternative Name:	HIBCH ( <a href="#">HIBCH Products</a> )

## Target Details

---

Background:	HIBCH is responsible for the specific hydrolysis of HIBYL-CoA, a valine catabolite, as well as the hydrolysis of beta-hydroxypropionyl-CoA, an intermediate in a minor pathway of propionate metabolism.
Molecular Weight:	43482
Gene ID:	26275
NCBI Accession:	<a href="#">NP_055177</a> , <a href="#">NP_932164</a>
UniProt:	<a href="#">Q6NVY1</a>
Pathways:	<a href="#">Monocarboxylic Acid Catabolic Process</a>

## Application Details

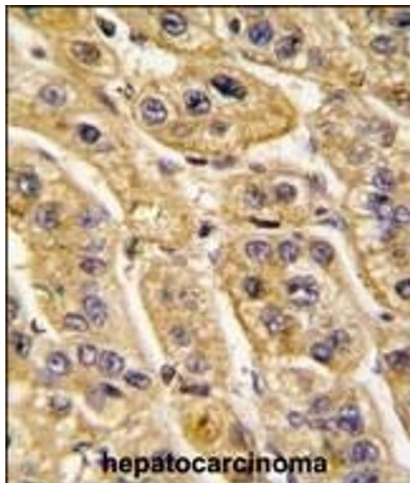
---

Application Notes:	WB: 1:1000. IHC-P: 1:10~50
Restrictions:	For Research Use only

## Handling

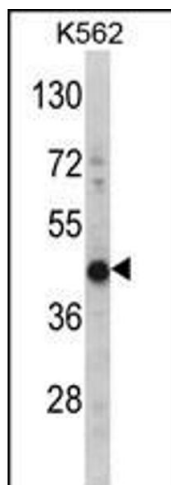
---

Format:	Liquid
Buffer:	Purified polyclonal antibody supplied in PBS with 0.09 % (W/V) sodium azide.
Preservative:	Sodium azide
Precaution of Use:	This product contains Sodium azide: a POISONOUS AND HAZARDOUS SUBSTANCE which should be handled by trained staff only.
Storage:	4 °C,-20 °C
Storage Comment:	Maintain refrigerated at 2-8 °C for up to 6 months. For long term storage store at -20 °C in small aliquots to prevent freeze-thaw cycles.
Expiry Date:	6 months



### Immunohistochemistry (Paraffin-embedded Sections)

**Image 1.** Formalin-fixed and paraffin-embedded human hepatocarcinoma tissue reacted with HIBCH antibody (Center), which was peroxidase-conjugated to the secondary antibody, followed by DAB staining. This data demonstrates the use of this antibody for immunohistochemistry, clinical relevance has not been evaluated.



### Western Blotting

**Image 2.** Western blot analysis of HIBCH Antibody (Center) (ABIN391638 and ABIN2841549) in K562 cell line lysates (35 µg/lane). HIBCH (arrow) was detected using the purified Pab.(2 µg/mL)