

Datasheet for ABIN391639
anti-ABCC4 antibody (C-Term)[Go to Product page](#)

1 Image

Overview

Quantity:	400 µL
Target:	ABCC4
Binding Specificity:	AA 1117-1145, C-Term
Reactivity:	Human
Host:	Rabbit
Clonality:	Polyclonal
Conjugate:	This ABCC4 antibody is un-conjugated
Application:	Western Blotting (WB)

Product Details

Immunogen:	This ABCC4 antibody is generated from rabbits immunized with a KLH conjugated synthetic peptide between 1117-1145 amino acids from the C-terminal region of human ABCC4.
Clone:	RB17763
Isotype:	Ig Fraction
Purification:	This antibody is prepared by Saturated Ammonium Sulfate (SAS) precipitation followed by dialysis against PBS.

Target Details

Target:	ABCC4
Alternative Name:	ABCC4 (ABCC4 Products)

Target Details

Background: ABCC4 is a member of the superfamily of ATP-binding cassette (ABC) transporters. ABC proteins transport various molecules across extra- and intra-cellular membranes. ABC proteins are divided into seven distinct subfamilies (ABC1, MDR/TAP, MRP, ALD, OABP, GCN20, White). This protein is a member of the MRP subfamily which is involved in multi-drug resistance. The specific function of this protein has not yet been determined, however, this protein may play a role in cellular detoxification as a pump for its substrate, organic anions.

Molecular Weight: 149527

Gene ID: 10257

NCBI Accession: [NP_001098985](#), [NP_005836](#)

UniProt: [O15439](#)

Application Details

Application Notes: WB: 1:1000

Restrictions: For Research Use only

Handling

Format: Liquid

Buffer: Purified polyclonal antibody supplied in PBS with 0.09 % (W/V) sodium azide.

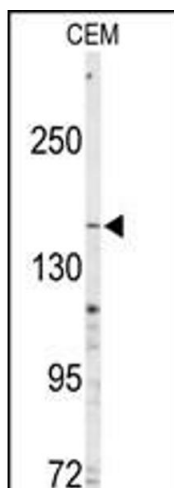
Preservative: Sodium azide

Precaution of Use: This product contains Sodium azide: a POISONOUS AND HAZARDOUS SUBSTANCE which should be handled by trained staff only.

Storage: 4 °C, -20 °C

Storage Comment: Maintain refrigerated at 2-8 °C for up to 6 months. For long term storage store at -20 °C in small aliquots to prevent freeze-thaw cycles.

Expiry Date: 6 months



Western Blotting

Image 1. Western blot analysis of anti-ABCC4 Antibody (C-term) (ABIN391639 and ABIN2841550) in CEM cell line lysates (35 µg/lane). ABCC4 (arrow) was detected using the purified Pab.