

Datasheet for ABIN391650  
**anti-GOLPH3 antibody (C-Term)**

3 Images

1 Publication

[Go to Product page](#)

## Overview

|                      |   |
|----------------------|---|
| Quantity:            | 400 µL  |
| Target:              | GOLPH3  |
| Binding Specificity: | AA 251-279, C-Term  |
| Reactivity:          | Human, Mouse  |
| Host:                | Rabbit  |
| Clonality:           | Polyclonal  |
| Conjugate:           | This GOLPH3 antibody is un-conjugated   |
| Application:         | Western Blotting (WB), Immunohistochemistry (Paraffin-embedded Sections) (IHC (p)), Flow Cytometry (FACS) |

## Product Details

|                       |  |
|-----------------------|--|
| Immunogen:            | This GOLPH3 antibody is generated from rabbits immunized with a KLH conjugated synthetic peptide between 251-279 amino acids from the C-terminal region of human GOLPH3. |
| Clone:                | RB18063  |
| Isotype:              | Ig Fraction  |
| Predicted Reactivity: | Rat  |
| Purification:         | This antibody is prepared by Saturated Ammonium Sulfate (SAS) precipitation followed by dialysis against PBS.  |

## Target Details

|         |        |
|---------|--------|
| Target: | GOLPH3 |
|---------|--------|

## Target Details

|                   |  |
|-------------------|--|
| Alternative Name: | GOLPH3 ( <a href="#">GOLPH3 Products</a> )   |
| Background:       | The Golgi complex plays a key role in the sorting and modification of proteins exported from the endoplasmic reticulum. This protein encoded by this gene is a peripheral membrane protein of the Golgi stack and may have a regulatory role in Golgi trafficking. |
| Molecular Weight: | 33811  |
| Gene ID:          | 64083  |
| NCBI Accession:   | <a href="#">NP_071413</a>  |
| UniProt:          | <a href="#">Q9H4A6</a>   |

## Application Details

|                    |  |
|--------------------|--|
| Application Notes: | WB: 1:1000. IHC-P: 1:50~100. FC: 1:10~50 |
| Restrictions:      | For Research Use only                    |

## Handling

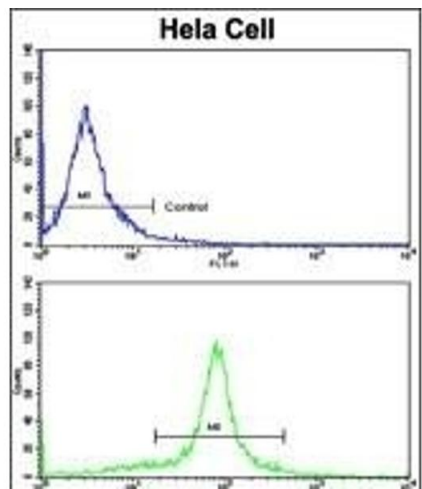
|                    |  |
|--------------------|--|
| Format:            | Liquid   |
| Buffer:            | Purified polyclonal antibody supplied in PBS with 0.09 % (W/V) sodium azide.   |
| Preservative:      | Sodium azide   |
| Precaution of Use: | This product contains Sodium azide: a POISONOUS AND HAZARDOUS SUBSTANCE which should be handled by trained staff only.                     |
| Storage:           | 4 °C,-20 °C  |
| Storage Comment:   | Maintain refrigerated at 2-8 °C for up to 6 months. For long term storage store at -20 °C in small aliquots to prevent freeze-thaw cycles. |
| Expiry Date:       | 6 months   |

## Publications

Product cited in: Lin, Liu, Sun, Yuan, Zhang, Chen: "Establishment and characterization of a tamoxifen-mediated reversible immortalized mouse dental papilla cell line." in: **In vitro cellular & developmental biology. Animal**, Vol. 49, Issue 2, pp. 114-21, (2013) ([PubMed](#)).

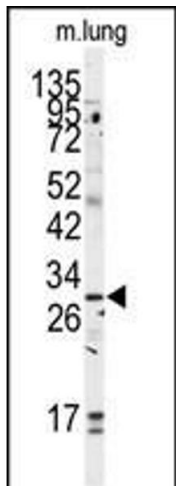
Kaushik, Arias, Kwon, Lopez, Athonvarangkul, Sahu, Schwartz, Pessin, Singh: "Loss of

autophagy in hypothalamic POMC neurons impairs lipolysis." in: **EMBO reports**, Vol. 13, Issue 3, pp. 258-65, (2012) ([PubMed](#)).



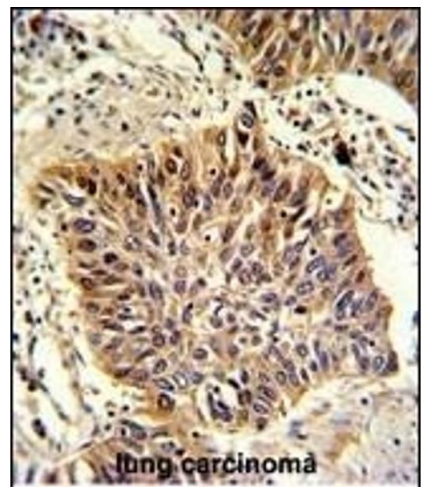
Flow Cytometry

**Image 1.** Flow cytometric analysis of hela cells using GOLPH3 Antibody (C-term)(bottom histogram) compared to a negative control cell (top histogram). FITC-conjugated goat-anti-rabbit secondary antibodies were used for the analysis.



Western Blotting

**Image 2.** Western blot analysis of anti-GOLPH3 Antibody (C-term) (ABIN391650 and ABIN2841558) in mouse lung tissue lysates (35 µg/lane). GOLPH3 (arrow) was detected using the purified Pab.



Immunohistochemistry (Paraffin-embedded Sections)

**Image 3.** Formalin-fixed and paraffin-embedded human lung carcinoma with GOLPH3 Antibody (C-term), which was peroxidase-conjugated to the secondary antibody, followed by DAB staining. This data demonstrates the use of this antibody for immunohistochemistry, clinical relevance has not been evaluated.